

FOR SALE

Cleveland Avenue,
Chiswick, W4

Flat
Chiswick

£550,000 sh of fh

2  1  1 

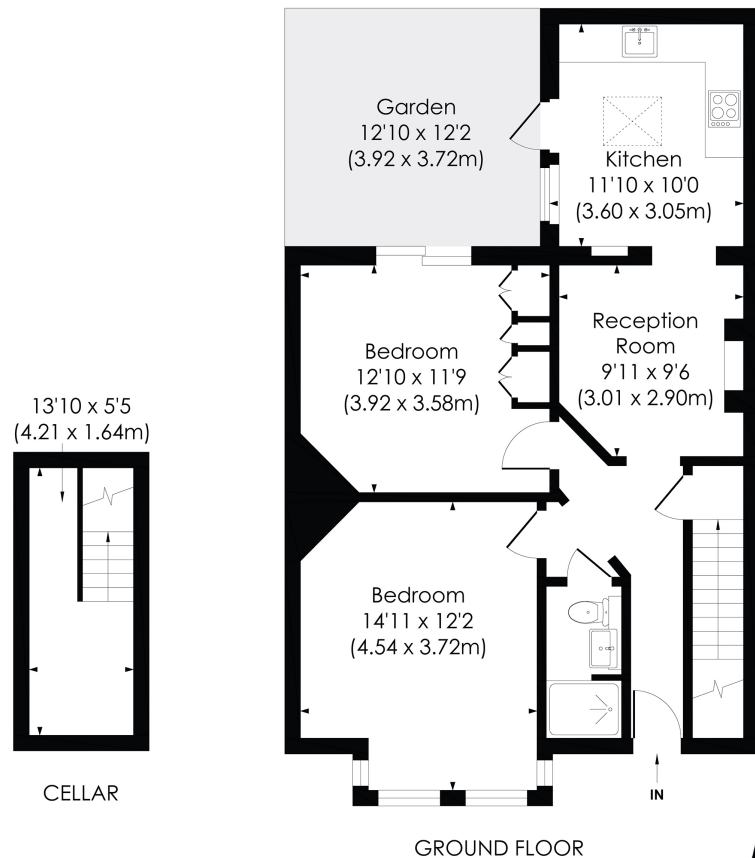


**horton
andgarton**

SALES / LETTINGS / PROPERTY MANAGEMENT

hortonandgarton.co.uk | Sales 020 3989 6464 | Lettings 020 3989 5454
161 Chiswick High Road, London, W4 2DT





CLEVELAND AVENUE, W4

Approx. Gross Internal Floor Area
780 Sq'ft/72.4 SqM (Including cellar)
705 Sq'ft/65.5 SqM (Excluding cellar)

**horton
andgarton**

© Pixangle Property Marketing Ltd. info@pixangle.com Tel: 0208 870 2118
 This floor plan has been prepared for the purpose of illustration only in accordance with the latest RICS code of measuring practice and is not to scale. All measurements and areas are approximate and whilst every effort has been made to ensure the accuracy of the plan contained here, no responsibility is taken for any error, omission or misstatement.



Ground floor garden flat | Fitted kitchen | 780 Sq' - 72.4 SqM | EPC rating C | Two bedrooms - One bathroom | Central Chiswick



hortonandgarton.co.uk
 Sales 020 3989 6464
 Lettings 020 3989 5454

161 Chiswick High Road, London, W4 2DT