







This bespoke, contemporary-style detached, newly built large family home offers a perfect blend of modern living and luxury. The ground floor features an impressive open-plan, split-level living, dining, and kitchen area, designed for seamless family interaction and entertaining. Complementing this space is a snug/sitting/cinema room, an office/study, a gym with its own en suite, a utility room, and a separate WC. On the first floor, the spacious main bedroom suite boasts a dressing room, en suite, and access to a large south & west-facing roof terrace with stunning sea views. There are two additional bedrooms on this floor, one with an en suite and a stylish family bathroom. The second floor provides two more bedrooms a 'Jack & Jill' en suite shower room, offering flexibility for larger families or guests. The home is equipped with high-specification luxury kitchens and bathrooms, designed for comfort and style. It sits on a generous plot with expansive gardens and ample driveway parking. Energy-efficient features include underfloor heating powered by an electric air source heat pump, a vehicle charging point, and a photovoltaic storage array, assisting sustainable living. The property is covered by a 10-year warranty for added peace of mind. EPC RATING = B

Guide Price £1,350,000

Tenure Freehold

Property Type Detached House

Receptions 3

Bedrooms 5

Bathrooms 4

Parking Driveway

Heating Electric

EPC Rating A

Council Tax Band G

Folkestone & Hythe



Situation

The property is superbly located in a most sought after tucked away and peaceful location close to the seafront. Sandgate boasts a popular village centre with a broad range of interesting, antique shops, boutiques, public houses, cafes, restaurants and village store. The bustling Cinque Port of Hythe is three miles to the West which offers amenities including; Waitrose, Sainsbury's and Aldi, a wide variety of independent shops and larger retailers, doctors surgeries and dentists, swimming pool and leisure facilities, sports grounds and clubs and public houses and restaurants. The Port town of Folkestone is approximately two miles to the East and is the home of 'The Creative Quarter' which boasts a thriving collection of Artist's studios and creative businesses, as well as a wide range of amenities such as Shopping centre, Supermarkets, independent shops, restaurants and leisure facilities, Folkestone benefits from the recently restored Harbour Arm which has become a food, drink and entertainment destination for the town and its visitors. There is a mainline railway station at Folkestone (Approx. 1.5 miles) and Sandling Station' (Approx. 4 miles) with direct connection to the High Speed service to London Stratford and St Pancras stations with an Approx. journey time of 53 minutes. Channel Tunnel terminal is (Approx. 4 miles) The M20 connection to the motorway network is (Approx. 2 miles).

Ground floor
Entrance hall

Kitchen

25' 0" x 15' 8" (7.62m x 4.78m)

Living/Dining room

28' 7" x 25' 0" (8.71m x 7.62m)

Office/playroom

9' 1" x 8' 11" (2.77m x 2.72m)

Cinema room/snug

18' 6" x 13' 2" (5.64m x 4.01m)

Gym room

13' 2" x 10' 8" (4.01m x 3.25m)

Gym shower room

Utility room

11' 6" x 8' 5" (3.51m x 2.57m)

Cloakroom/WC

Storage cupboard with data connection unit

First floor
Landing





Main bedroom

23' 2" x 14' 6" (7.06m x 4.42m)

Walk-in wardrobe

11' 0" x 6' 2" (3.35m x 1.88m)

En suite bath/shower room

Large sea view roof terrace

29' 0" x 25' 2" (8.84m x 7.67m)

Bedroom two

14' 4" x 13' 3" (4.37m x 4.04m)

Bedroom two en suite shower room

Bedroom three

14' 10" x 13' 3" (4.52m x 4.04m)

Main bath/shower room

Second floor

Landing

Bedroom four

19' 2" x 18' 10" (5.84m x 5.74m)

Bedroom five

18' 10" x 13' 5" (5.74m x 4.09m)

Bedroom four/four en suite shower room

Outside

Brick paved driveway

Enclosed garden with lawn, large patio and paths

Additional information

Energy-efficient features include underfloor heating powered by an electric air source heat pump, vehicle charging point, and a photovoltaic storage array.

Agent note

The living room and kitchen images have been virtually staged to illustrate how the space could be furnished.







Approximate Gross Internal Area (Excluding Terrace) = 370 sq m / 3978 sq ft
Terrace = 68 sq m / 729 sq ft

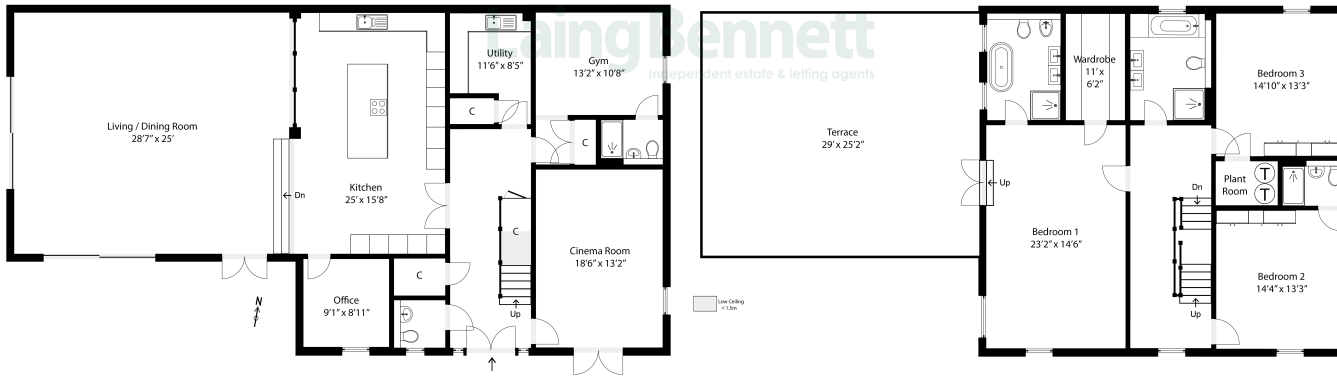
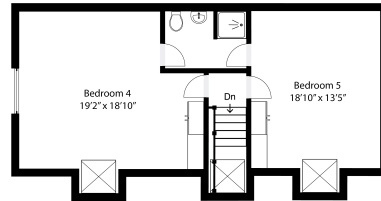


Illustration for identification purposes only. Measurements are approximate. Dimensions given are between the widest points.
Not to scale. Outbuildings are not shown in actual location.
© Unauthorised reproduction prohibited - jroylemp100@gmail.com



Need to book a viewing?

If you would like to book a viewing please contact our office on 01303 863393 or email sales@laingbennett.co.uk

See all our properties at



Energy Efficiency Rating	
	Current Potential
Very energy efficient - lower running costs	
(92+) A	97 97
(81-91) B	
(69-80) C	
(55-68) D	
(39-54) E	
(21-38) F	
(1-20) G	
Not energy efficient - higher running costs	
England, Scotland & Wales	

www.laingbennett.co.uk

The Estate Office
8 Station Road
Lyminge
Folkestone
Kent
CT18 8HP



These property details are intended to give a fair description and give guidance to prospective Purchaser/Tenant. They do not constitute an offer or contract of Sale/Tenancy and all measurements are approximate. While every care has been taken in the preparation of these details neither Laing Bennett Ltd nor the Vendor/ Landlord accept any liability for any statement contained herein. Laing Bennett Ltd has not tested any services, appliances, equipment or facilities, and nothing in these details should be deemed to be a statement that they are in good working order or that the property is in good structural condition or otherwise. We advise all applicants to commission the appropriate investigations before Exchange of Contracts/entering into a Tenancy Agreement. It should not be assumed that any contents/furnishing, furniture etc. photographed are included in the Sale/Tenancy, nor that the property remains as displayed in the photographs. No person in the employment of Laing Bennett Ltd has authority to make or give any representation or warranty whatever in relation to this property.