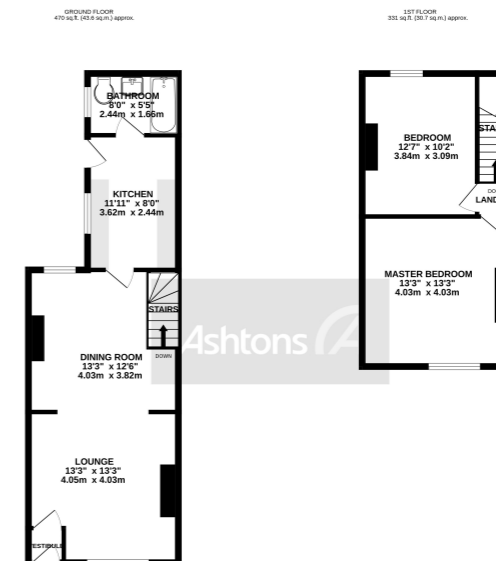
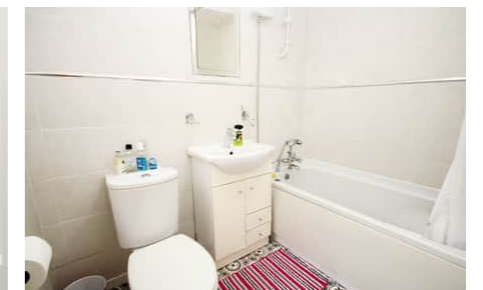
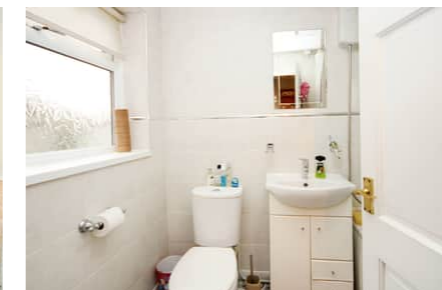


# Wellfield Street, Warrington, WA5 £149,950



TOTAL FLOOR AREA: 800 sq ft (74.4 sq m) approx.  
We have checked this floor plan against the current data of the Ordnance Survey. Measurements of rooms, corridors, stairs and other areas are approximate and not necessarily accurate to any particular degree. They are for general guidance only and should not be used for any legal or financial purposes. The floor plan is not to scale and is not a substitute for a site visit. © 2015 Ashtons



☒ Charming Two-Bedroom Terraced House on Wellfield Street, Warrington ☒  
Nestled in the heart of the vibrant community on Wellfield Street, Warrington, we proudly present this delightful two-bedroom terraced house that seamlessly combines comfort, convenience, and a touch of nature.

 x 2  x 1

See more of this house at [ashtons.net](http://ashtons.net)

