



5 Knightsbridge Crescent, Staines-upon-Thames, Surrey. TW18 2QR.
4 Bedroom Semi-Detached House - £525,000 Freehold

5 Knightsbridge Crescent, Staines-upon-Thames, Surrey. TW18 2QR.

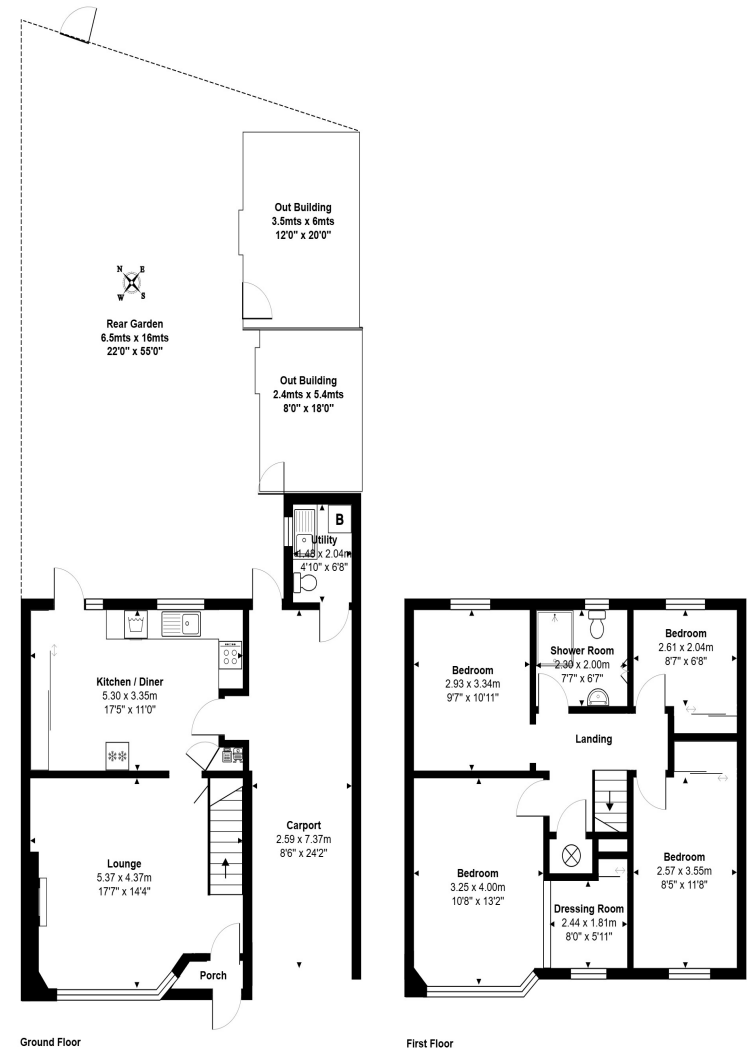
01784 451458

4 Bedroom Semi-Detached House - £525,000 Freehold

HUGELY SPACIOUS FOUR BEDROOM SEMI-DETACHED PROPERTY SITUATED ALONG THIS MUCH SOUGHT AFTER CRESCENT IDEALLY POSITIONED FOR EASY ACCESS TO STAINES TOWN CENTRE, MAINLINE TRAIN STATION, LOCAL SHOPS & SCHOOLS. The property offers great scope for improvement/extension (S.T.R.P.P) and currently benefits from a spacious lounge, modern fitted kitchen/diner, four well-proportioned bedrooms with dressing room to Bed 1, family bathroom, large secluded rear garden with brick-built outbuildings, carport and off-street parking. No Onward Chain. Viewings Highly Recommended!

Key Features

MUCH SOUGHT AFTER LOCATION
FOUR WELL-PROPORTIONED BEDROOMS
LARGE SECLUDED REAR GARDEN WITH BRICK-BUILT OUTBUILDING
GREAT SCOPE FOR IMPROVEMENT/EXTENSION (S.T.R.P.P)
CAR-PORT & OFF-STREET PARKING



Total Area: 127.8 m² ... 1376 ft²

All measurements are approximate and for display purposes only.



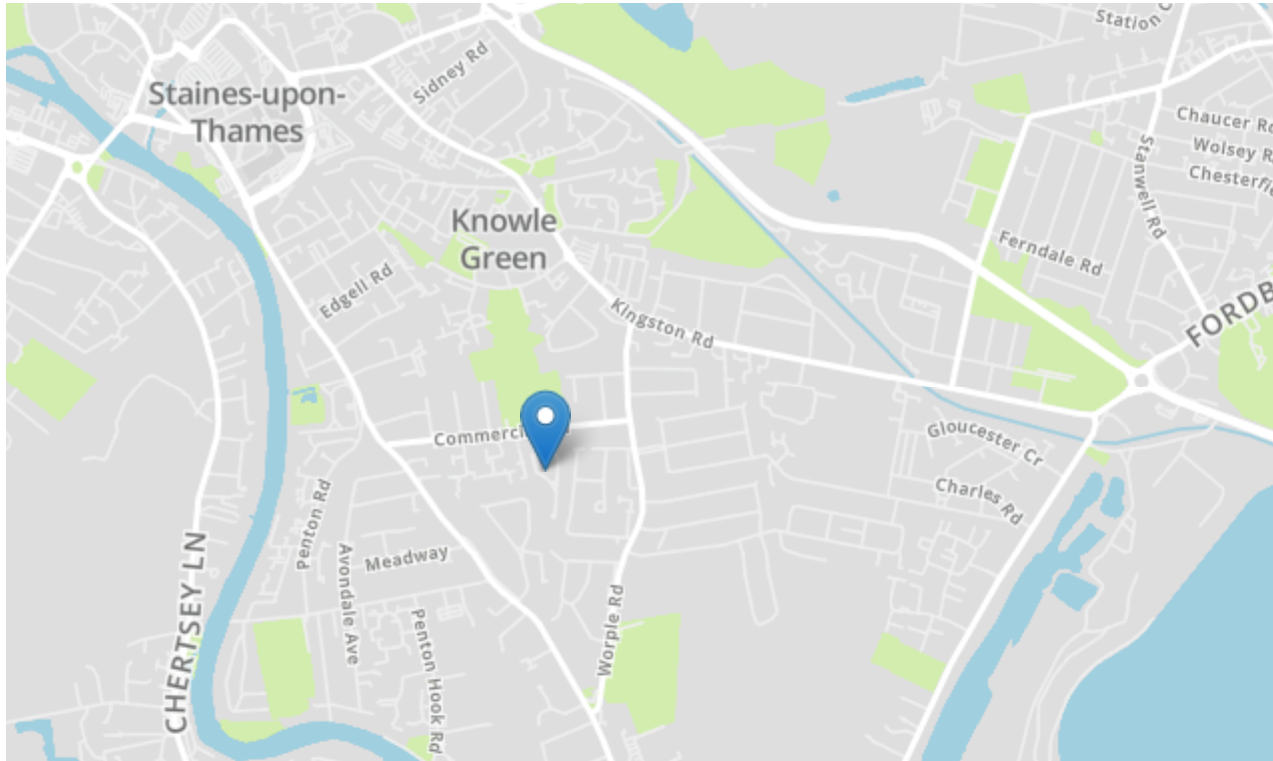
GREGORY BROWN
RESIDENTIAL SALES & LETTINGS





5 Knightsbridge Crescent, Staines-upon-Thames, Surrey. TW18 2QR.

gregory-brown.co.uk



Tenure **Freehold**

Lease Term

Ground Rent

Service Charge

Local Authority

Council Tax

We have prepared these property particulars as a general guide to a broad description of the property. They are not intended to constitute part of an offer or contract. We have not carried out a structural survey and the services, appliances and specific fittings have not been tested. All photographs, measurements, floorplans and distances referred to are given as a guide only and should not be relied upon for the purchase of carpets or any other fixtures or fittings. Lease details, service charges and ground rents (where applicable) and council tax are given as a guide only and should be checked and confirmed by your solicitor prior to exchange of contracts. The copyright of all details, photographs and floorplans remain exclusive to Gregory Brown.

