



Harrison Close

Caldicott Court | HITCHIN | Hertfordshire | SG4 9SL

www.stonegate-estates.co.uk



HARRISON CLOSE

Property Description

Located in a highly sought-after gated development just moments from Hitchin town centre and train station, this beautifully presented two-bedroom ground floor apartment offers contemporary living in an unbeatable location.

The property is offered in excellent order throughout and features a open-plan living area and a modern, refitted kitchen with integrated appliances.

The main bedroom benefits from its own private balcony and a sleek en-suite shower room, while the second bedroom is served by a stylish family bathroom.

Further highlights include a paved patio area perfect for outdoor dining or relaxing, as well as allocated parking for added convenience.

This property combines comfort, style, and practicality in one of Hitchin's most desirable locations. Ideal for commuters, first-time buyers, or investors alike.

Key Features:

Two double bedrooms

Private balcony to main bedroom

En-suite shower room

Refitted modern kitchen

Paved patio

Allocated parking

Ground floor position

Easy access to Hitchin town centre and train station Very popular location Immaculate condition throughout

£379,950 Leasehold



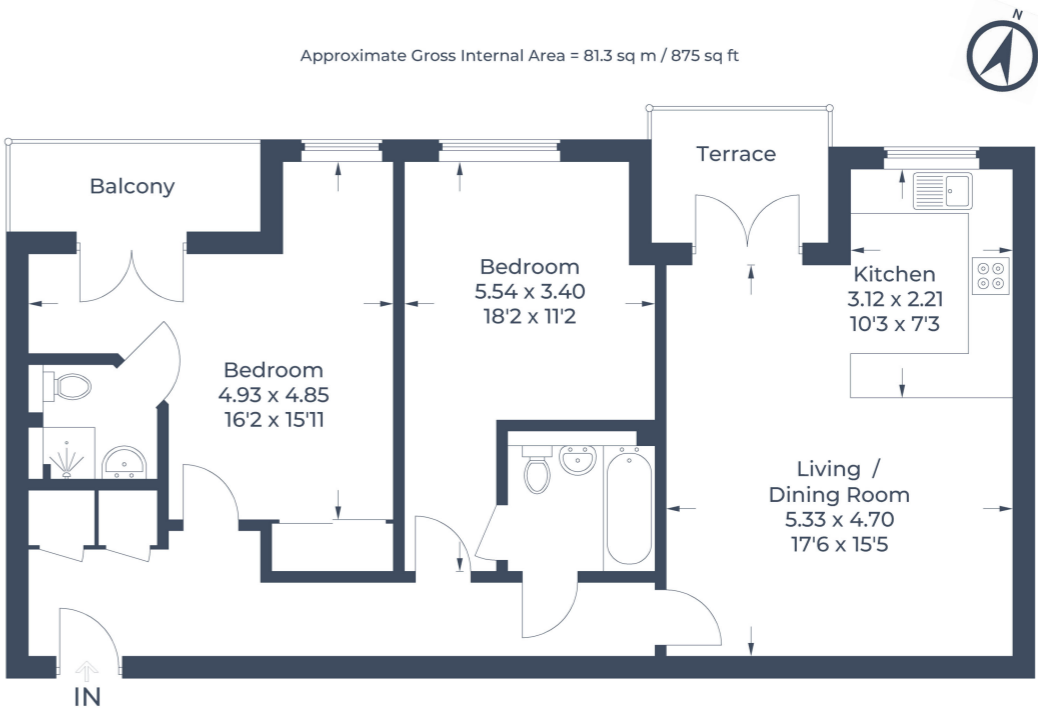


Illustration for identification purposes only, measurements are approximate, not to scale.
© CJ Property Marketing Produced for Stonegate Estates



- Two Bedroom Apartment
- Gated Development
- Balcony
- Patio Area
- Ensuite to Master Bedroom
- Allocated Parking
- Excellent Condition
- Fitted Kitchen

EPC Rating:

Stonegate Estate Agents

01462 438979

sales@stonegate-estates.co.uk | www.stonegate-estates.co.uk

