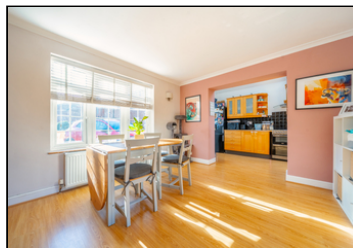
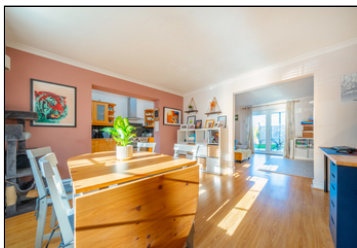


## Oberon Way, Shepperton, TW17 0QR

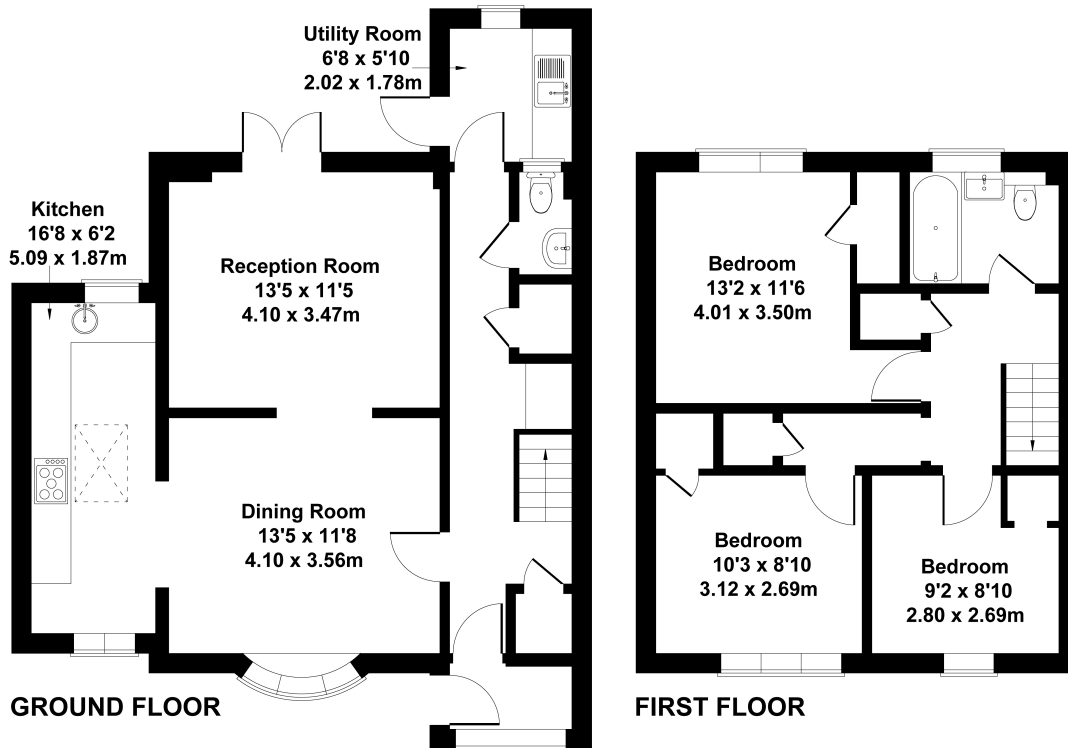
### Offers in Excess of £450,000



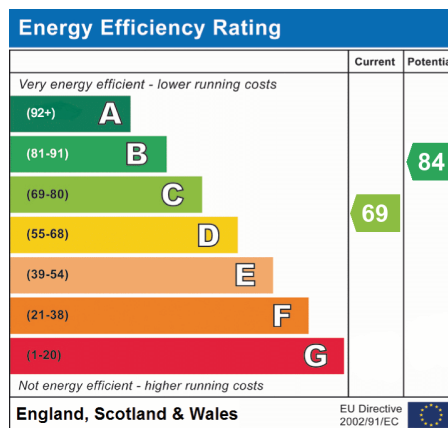
- Three Good Size Bedrooms
- Downstairs WC
- Ample Off Street Parking
- Ideal First Time Buy
- Utility Room
- Modern Bathroom
- Open Plan Downstairs
- Well Presented Throughout

## Oberon Way, Shepperton, TW17

Approximate Gross Internal Area  
Main House 1130 sq ft - 105 sq m



This floorplan is for guidance only and does not form part of an offer or contract.  
Buyers or tenants should verify all details through inspection, searches, and surveys.  
Measurements are approximate and should not be relied upon for valuation or transactions.  
Produced by Plan Portal.  
[www.evolve.london.co.uk](http://www.evolve.london.co.uk)



We have not tested the services or domestic appliances so we cannot verify that they are in working order. The buyer is advised to obtain verification from their solicitor or surveyor. These particulars form no part of any offer or contract and their accuracy cannot be guaranteed.