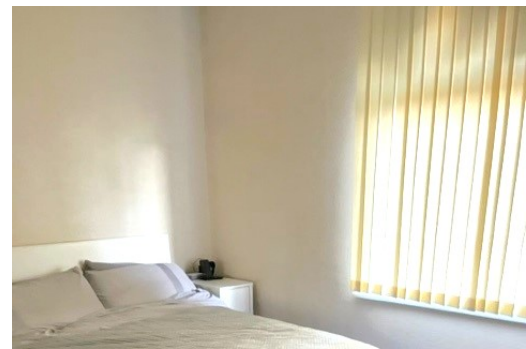


# HARRISON INGRAM



38 Pinnell Road, London, SE9 6AJ

£1,800 pcm

- 3 GOOD SIZE BEDROOMS
- FITTED KITCHEN/DINER
- GOOD SIZE LOUNGE
- OFF ROAD PARKING ON OWN DRIVEWAY
- CLOSE PROXIMITY TO MANY AMENITIES
- EASY TO MAINTAIN GARDEN
- GAS CENTRAL HEATING AND DOUBLE GLAZING

156 Well Hall Road, Eltham, London, SE9 6SN

Tel: 02088594419

Email: [info@harrisingrameltham.co.uk](mailto:info@harrisingrameltham.co.uk)

Web: [www.harrisingram.co.uk](http://www.harrisingram.co.uk)

# 38 Pinnell Road, London, SE9 6AJ

£1,800 pcm

This may sound like an "Estate Agents" cliché, however, INTERNAL VIEWING IS AN ABSOLUTE MUST TO FULLY APPRECIATE THE DECEPTIVELY SPACIOUS ACCOMMODATION this house has to offer.

Conveniently situated for many amenities including choice of MAINLINE STATIONS for the busy commuter, high street shopping, parks, bus routes, road links and schools.

The property boasts; lounge with feature fireplace, fitted KITCHEN/DINER, THREE VERY GOOD SIZE BEDROOMS, bathroom with white suite, decorated in neutral colours throughout, gas central heating, UPVC double glazing, lovely and easy to maintain garden, off road parking on own driveway and lots of storage space.

ALL IN ALL, A REALLY LOVELY HOME. Available:- END OF AUGUST 2024.

