



Chesham Drive | Basildon | £479,995



Chesham Drive

Basildon | Essex | SS15 4AH

Located on the South of Billericay is this deceptively spacious four-bedroom family home, which boasts an amazing kitchen/family room and is a superb house for entertaining.

On entering the property, you are greeted by a light and bright entrance hall with doors leading to a separate utility room and a modern ground floor cloakroom/shower. As previously mentioned the kitchen family room boasts a huge range of fitted units including integrated appliances. To the rear of the room is a fantastic seating area looking over the low maintenance rear garden, this is in addition to a good size reception to the front of the house which is a perfect playroom/TV to relax and unwind.

On the first floor there are four good size bedrooms and a super-size family bathroom with four-piece suite including a large shower cubicle.

Outside there is off-road parking to the front, and the rear garden enjoys a nice outlook and is easy to maintain.

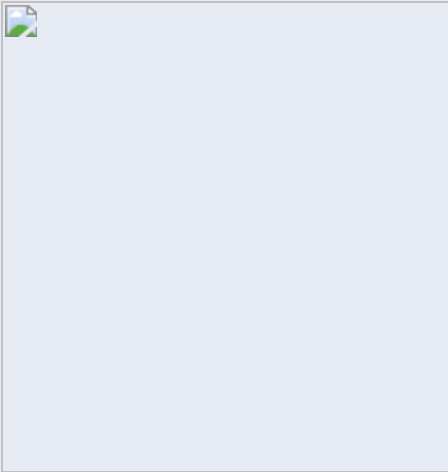
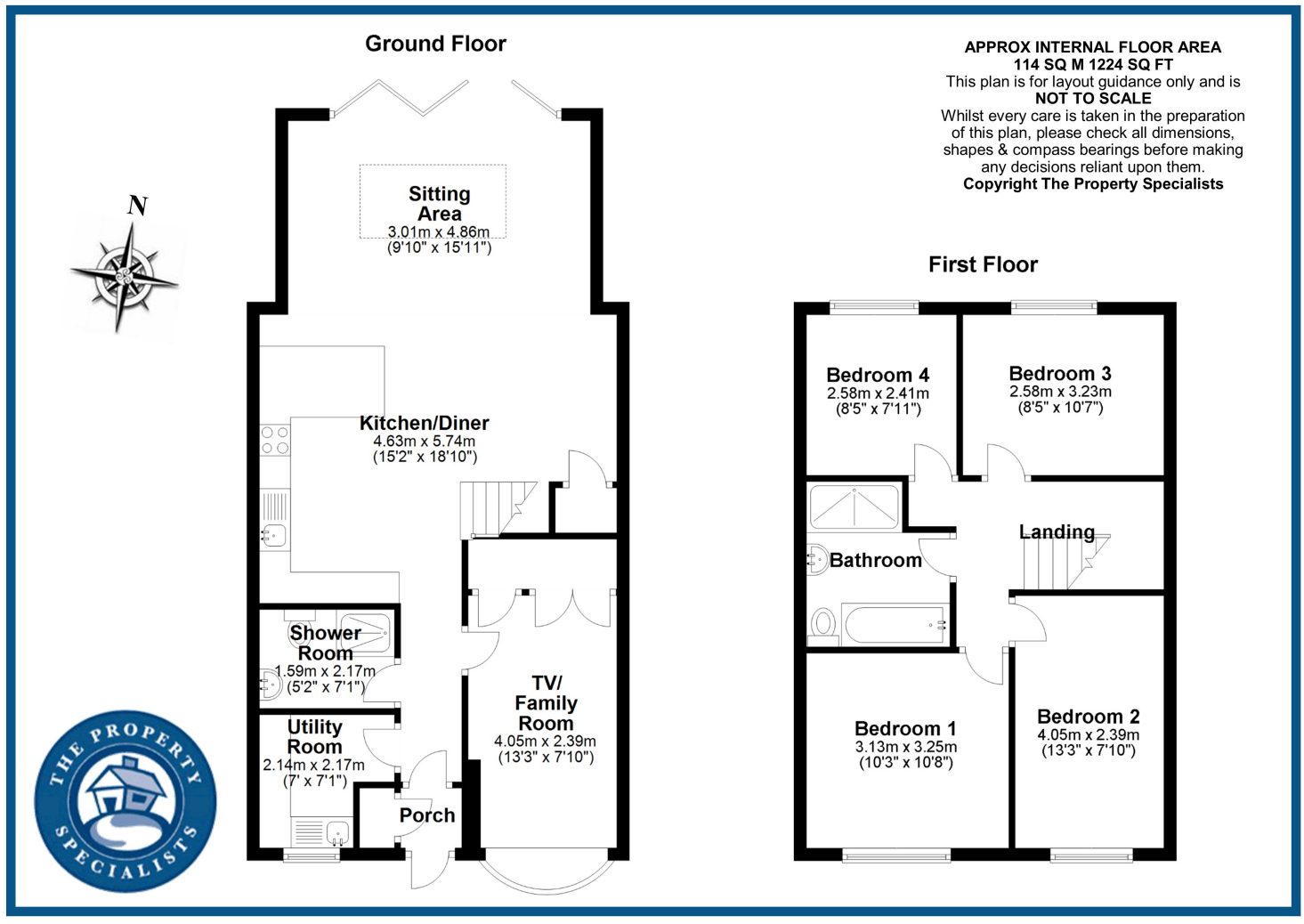
An internal viewing is strongly advised to fully appreciate the size and space on offer.





- Deceptively Spacious Family Home
- Entrance Hallway with Ground Floor Cloakroom
- Ground Floor Cloakroom / Shower Room
- Fantastic Fitted Kitchen With Range Of Appliances
- Playroom / TV Room
- Separate Utility Room
- Open Plan Kitchen Family Room With Bi Fold Doors To The Rear Garden
- Four Good Size Bedrooms
- Large Four Piece Family Bathroom
- Low Maintenance Rear Garden
- Off Road Parking To The Front





Viewing strictly by appointment with The Property Specialists



Making Moving Home
Less Stressful

135 High Street, Billericay,
 Essex, CM12 9AB
Tel: 01277 654446
sales@thepropertyspecialists.co.uk