

## Holly Court, John Harrison Way, London, SE10 0BL

£350,000

Situated in one of the favoured blocks in Greenwich Millennium Village is this beautifully presented one bedroom apartment. Overlooking the communal landscaped gardens from the private balcony the apartment comprises of an open plan reception area, modern fitted kitchen, stylish bathroom and a secure allocated parking space. The property is offered chain free. Further benefits include 24 hour concierge services and onsite shops. The development is located a short walk from North Greenwich tube station (Jubilee Line), the Emirates Cable Cars and the O2 with the many attractions within, including bars and restaurants.

- One bed

Viewing by appointment with 1st avenue.

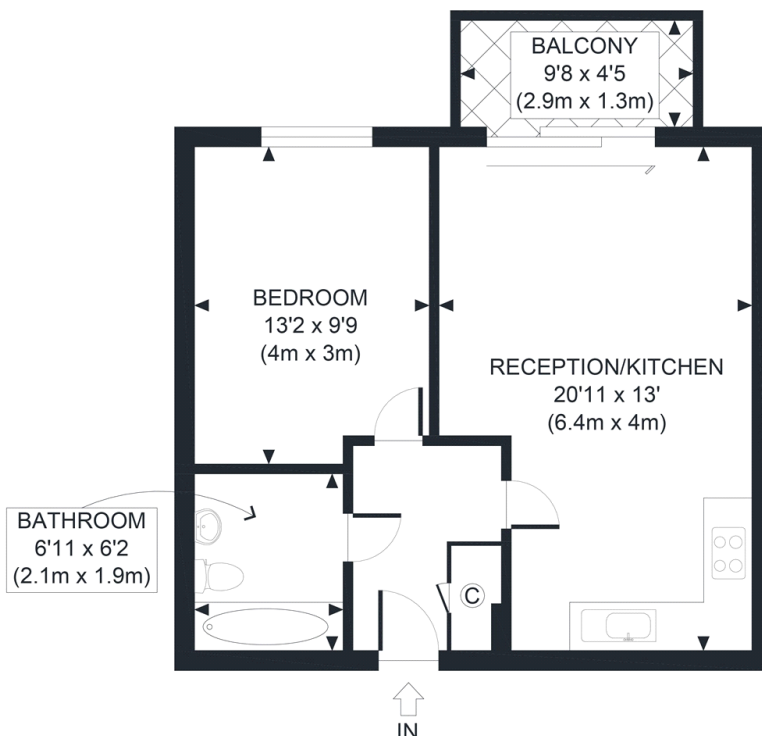
**Call: 020 8293 8600**

1st avenue, 128 Metcalfe Court, West Parkside, London SE10 0EL  
email: [info@1stavenue.co.uk](mailto:info@1stavenue.co.uk)

# Holly Court, John Harrison Way, London, SE10 0BL

£350,000

**1stavenue**  
Real Estate Services



THIRD FLOOR  
GROSS INTERNAL  
FLOOR AREA 485 SQ FT

APPROX. GROSS INTERNAL FLOOR AREA 485 SQ FT / 45 SQM

Disclaimer: Floor plan measurements are approximate and are for illustrative purposes only. While we do not doubt the floor plan accuracy and completeness, you or your advisors should conduct a careful, independent investigation of the property in respect of monetary valuation

Copyright **photoplan360**

Viewing by appointment with 1st avenue.

**Call: 020 8293 8600**

1st avenue, 128 Metcalfe Court, West Parkside, London SE10 0EL  
email: [info@1stavenue.co.uk](mailto:info@1stavenue.co.uk)

**1stavenue**  
Real Estate Services