



Queens Road

 Nick
GRIFFITH
ESTATE AGENTS

Queens Road

Cheltenham, GL50 2LR

£189,950 Leasehold

A beautifully modernised, one bedroom, south facing apartment with off-road parking just a short stroll from Montpellier.

NO ONWARD CHAIN • grade II listed • entrance hall • kitchen/living area • bedroom • bathroom • residents parking • south facing balcony • communal gardens • walking distance to excellent amenities

Description

A stunning raised ground floor, south facing, apartment, beautifully upgraded by the current owner and situated within this handsome Grade II listed building. The accommodation includes an entrance hall with steps up to a reduced height mezzanine currently used for storage, and a c.17.5x14ft open plan kitchen/living area boasting high ceilings and a full length feature sash window with working shutters opening onto the full width southwest facing terrace. The newly installed kitchen has an attractive range of units providing ample storage, Silestone worktops cleverly incorporating a breakfast bar and built-in appliances to include a fridge/freezer, dishwasher, washer/drier, oven and hob. The bedroom also enjoys a full length window with working shutters, and the refitted luxurious bathroom has a contemporary modern suite. Outside, there are well tended communal gardens to the front and rear, incorporating an allotment and private residents off-road parking. Lease - 999 years from 1981 - 1/7 share of Freehold. Service Charge - £100 per month. No short term lets. Cheltenham Borough Council Tax Band A. AGENTS NOTE: Best and final offers by midday on Friday 19th April 2024.



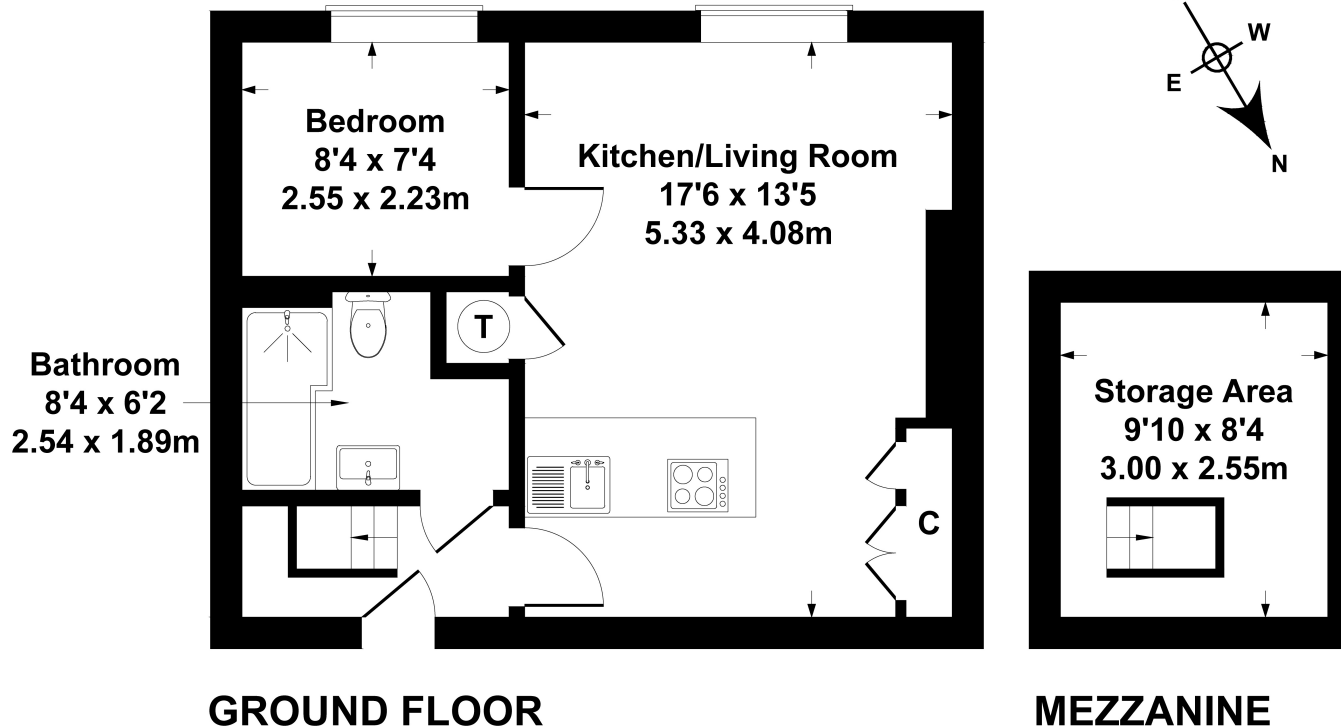


Situation

Apartment 3 is set back from Queens Road, just a short stroll from local shops and the railway station. Cheltenham is a vibrant Regency town, best known for its beautiful architecture, excellent shopping, and horse racing at the world famous Prestbury Park Racecourse. Cheltenham also plays host to the music, jazz, science, and literature festivals currently held in Imperial Gardens.

Flat 3, 9 Queens Road

Approximate Gross Internal Area
484 sq ft - 45 sq m



SKETCH PLAN FOR ILLUSTRATIVE PURPOSES ONLY

All measurements walls, doors, windows, fittings and appliances, their sizes and locations, are approximate only. They cannot be regarded as being a representation by the seller, nor their agent.

Produced by Potterplans Ltd. 2024

Nick Griffith Estate Agents for themselves and for the vendors or lessors of this property whose agents they are, give notice that: (i) The particulars are produced in good faith, are set out as a general guide only and do not constitute part of any contract. (ii) No person in the employment of Nick Griffith Estate Agents has any authority to make any representation or warranty whatever in relation to this property.