



7 Greenway, Letchworth Garden City, Hertfordshire. SG6 3UG





4 Bedroom Detached Bungalow

£700,000 Freehold

Offered to the market CHAIN FREE, this impressive four-bedroom detached chalet bungalow, located on the highly sought-after 'Manor Park' estate in Letchworth Garden City, offers a fantastic opportunity to enjoy a peaceful yet convenient lifestyle. Situated within walking distance to local amenities, the renowned Lordship School, and scenic countryside pubs and walking routes.

- Chain free
- Freehold
- Highly desirable 'Manor Park' estate
- Four bedrooms
- Driveway and double width garage
- Well maintained garden
- Situated next to countryside
- Close to Lordship School and local amenities
- Detached chalet bungalow
- EPC rating D. Council tax band F



Accommodation**Porch:**

Covering to upvc door to front. Utility cupboards.

Entrance Hall:

Carpet. Radiator. Two built in cupboards.

Living Room:

Carpet. Vaulted ceiling. Double glazed window to garden aspect. Double glazed sliding doors to garden patio. Large radiator. Staircase leading to mezzanine level. Open plan to:

Dining Room:

Carpet. Radiator. Double glazed window to side aspect. Adjoining worktop and opening through to kitchen.

Kitchen:

Tiled Floor. Double glazed window to front. Worktops with tiled splashback and a range of wall and base mounted units with integrated sink and gas hob. Boiler. Space for dishwasher and freestanding cooker. Opening and adjoining worktop through to dining room.

Utility Room:

Double glazed window to front. Tiled floor. Sink. Plumbed appliances.

Mezzanine:

Carpet. Double glazed window to front. Radiator. Banister overlooking living room. Door leading through to:

Bedroom Two:

Carpet. Radiator. Built in wardrobes. Double glazed windows to front and rear. Cupboard over door.

En-Suite:

Laminate flooring. Radiator. Shower with glass screen and sliding door and wall mounted shower head. Wash basin. WC. Double glazed window to rear.

Bedroom One:

Carpet. Radiator. Double glazed window to rear. Built in wardrobes.

Bedroom Three:

Carpet. Radiator. Double glazed window to front. Built in cupboard.

Bedroom Four:

Carpet. Radiator. Double glazed window to rear. Built in cupboard.

Bathroom:

Tiled floor. Tiled walls. Carpet. Radiator. Double glazed window to front. Vanity unit with integrated wash basin and WC. Shower with glass screen and door with wall mounted shower.

Outside**Front Garden:**

Driveway providing off road parking for two cars. Lawn with pathway leading to the covered front door. Established planting to front providing privacy.

Rear Garden:

Mostly laid to lawn and enclosed with fencing and established borders planted with trees and shrubs. Patio area directly to rear providing seating area and path leading to the garage, greenhouse and shed.

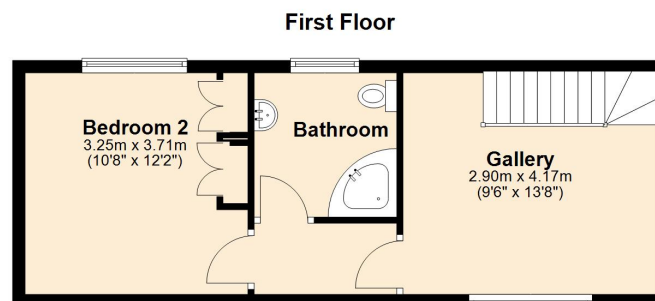
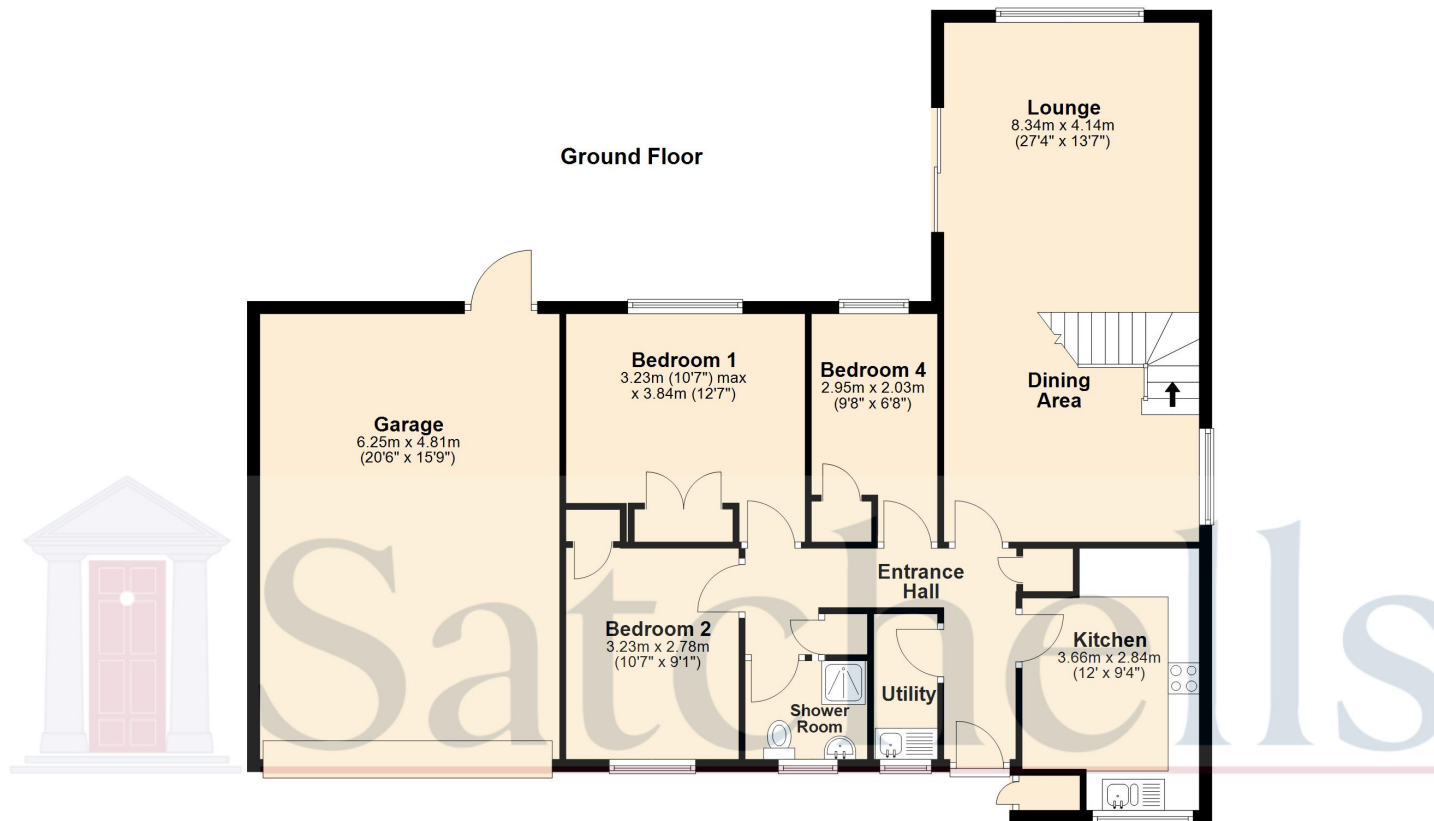
Agents Note:

Draft particulars yet to be approved by the vendor and may be subject to change.





These particulars are a guide only and do not constitute an offer or a contract. The floor plan is for identification purposes only and not to scale. All measurements are approximate and should not be relied upon if ordering furniture, white goods and flooring etc. We have presented the property as we feel fairly describes it but before arranging a viewing or deciding to buy, should there be anything specific you would like to know about the property please enquire. Satchells have not tested any of the appliances or carried out any form of survey and advise you to carry out your own investigations on the state, condition, structure, services, title, tenure, and council tax band of the property. Some images may have been enhanced and the contents shown may not be included in the sale. Satchells routinely refer to 3rd party services for which we receive an income from their fee. If you would like us to refer you to one of these services please ask one of our staff who will pass your details on. We advise you check the availability of the property on the day of your viewing.



For illustrative purposes only - NOT TO SCALE - Measurements shown are approximate.
The size and position of doors, windows, appliances and other features are approximate.

Plan produced using PlanUp.