



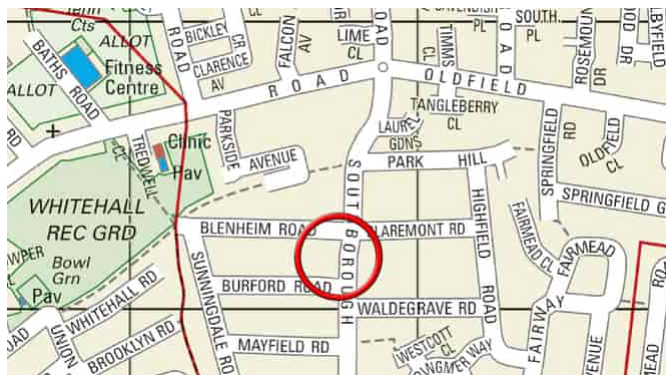
**Southborough Road,**

Bickley, Kent. BR1 2EL



**Tenure: Freehold**

**5 Bedrooms | 2 Reception Rooms | 2 Bathrooms**



GUIDE PRICE £1,200,000 - £1,300,000. This unique character house, of some 3174 sq. ft, offers, in our opinion, a beautifully appointed living space, within close proximity to Bickley railway station. Set across three floors, this elegant period home has five sizable double bedrooms, a contemporary open-plan kitchen and dining space, ideal for entertaining or relaxed family living, a basement cellar, detached garage with driveway, and an EV charging point. This is a rare opportunity to acquire a distinctive family home combining heritage character with modern luxury in one of Bickley's most sought-after residential areas. EPC Rating: D

**Enquiries To:**

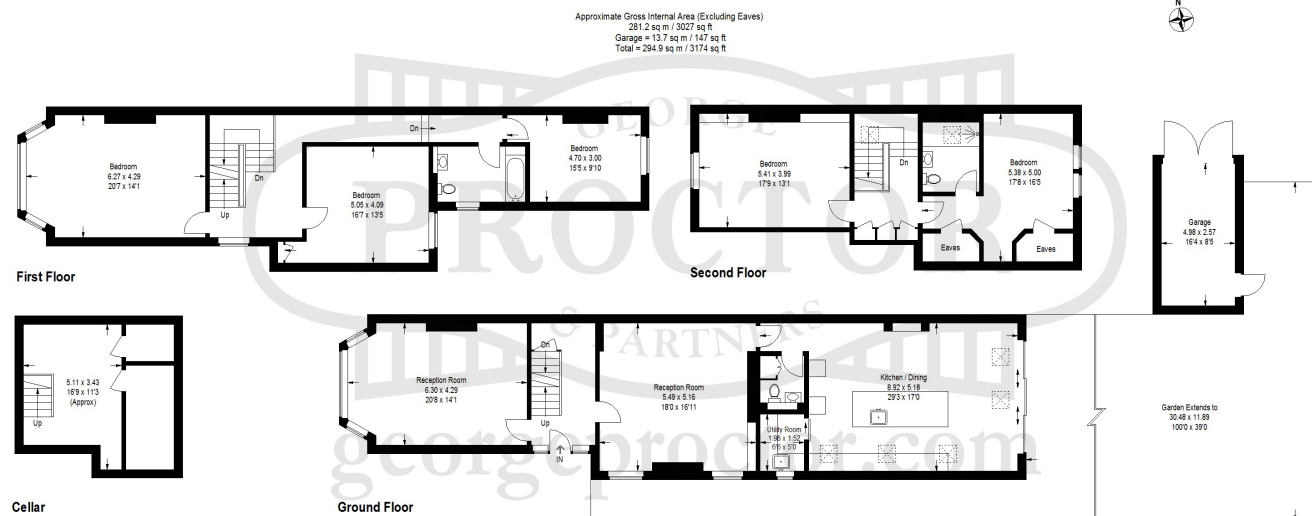
**T: 020 8467 2252**

**E: [beosales@georgeproctor.com](mailto:beosales@georgeproctor.com)**



**The Bickley Estate Office**

**Southborough Road, Bickley, Kent, BR1 2EB**



These particulars whilst believed to be accurate are made without responsibility on the part of the vendor or agents, their accuracy is not guaranteed nor do they form part of any contract and no warranty is given. Services or appliances have not been tested and no guarantee can be given as to their operation, buyers should seek professional advice where necessary. All measurements are approximate and may be rounded to the nearest three inches (10 cm). Floor plans, where shown, are indicative only. Any photographs included may be taken with the use of a wide angle lens. If there is a matter of particular interest please contact us for further information, especially before travelling any distance to view. Map reproduced by permission of Geographers A-Z Map Co Ltd. Licence No. A0514. This map is based upon Ordnance Survey maps with the permission of the controller of Her Majesty's Stationary Office.