

76 Felstead Road, Orpington, Kent, BR6 9AE

Property Images

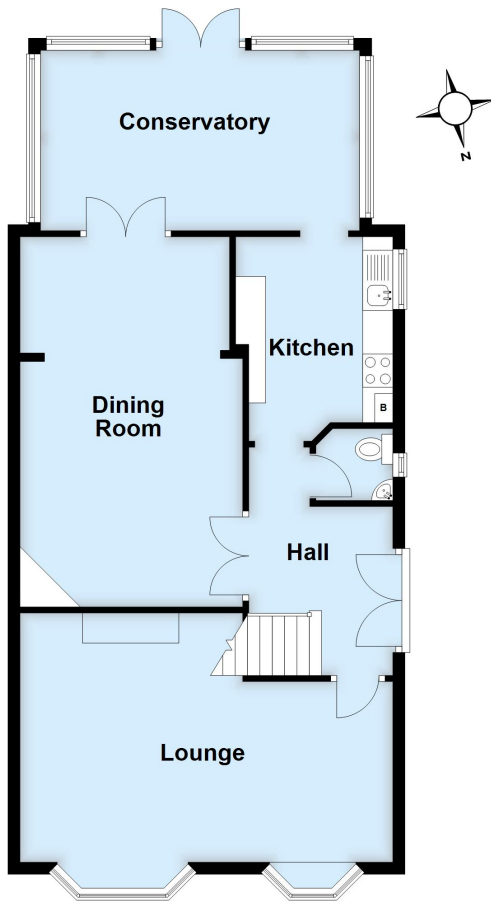






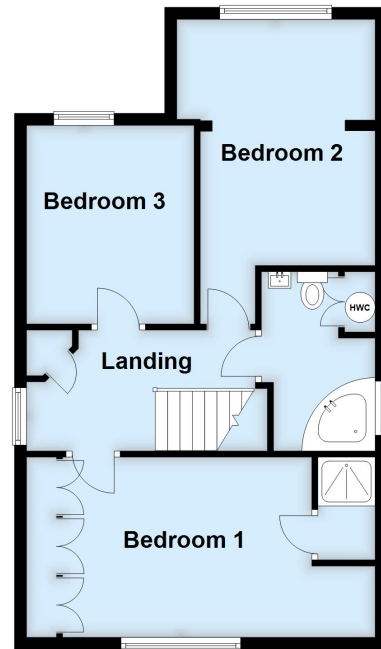
Ground Floor

Approx. 81.0 sq. metres (871.9 sq. feet)



First Floor

Approx. 54.9 sq. metres (591.3 sq. feet)



Total area: approx. 135.9 sq. metres (1463.2 sq. feet)

This plan is for general layout guidance and may not be to scale.
Plan produced using PlanUp.