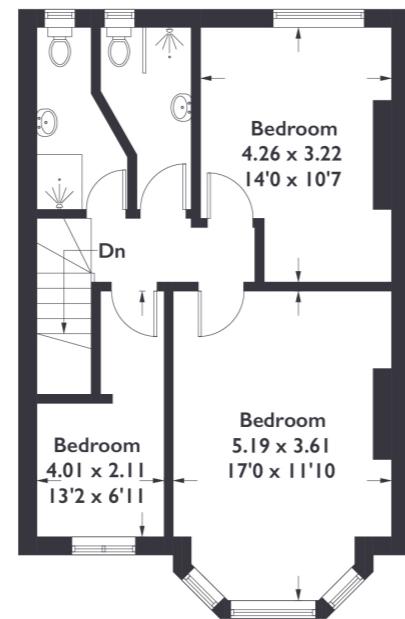
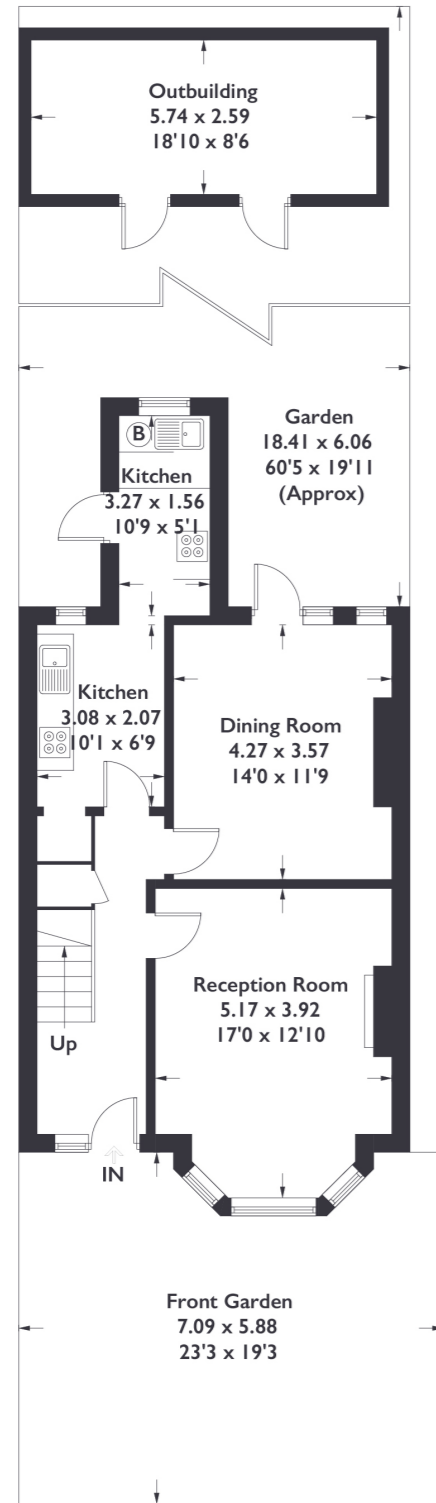


## Swyncombe Avenue, W5

Approximate Gross Internal Area = 109.3 sq m / 1176 sq ft  
Outbuilding = 15.5 sq m / 167 sq ft  
Total = 124.8 sq m / 1343 sq ft



Measured in accordance with RICS Code of Measuring Practice. To be used for identification and guidance purposes only.



### 3 BEDROOM HOUSE

## Swyncombe Avenue, W5

£899,950

Located just moments from all of the amenities Northfield Avenue has to offer, this bright and welcoming three bedroom property spans over two floors with the addition of off street parking.

### FEATURES

- End Of Terrace House
- Three Bedrooms
- Driveway Parking
- Oaklands Primary School
- Elthorne Park High School
- Northfields Tube Station
- Boston Manor Tube Station
- Chain Free
- Potential To Extend
- Planning Permission Granted



3 BEDROOM HOUSE

Swyncombe Avenue, W5  
£899,950

Leading into a bright hallway you're welcomed into a reception space on your right full of modern touches and features.

Through the hallway to your right you'll find a well sized reception area with plenty of light including a gorgeous bay window. Along the hallway on the ground floor you'll notice two kitchens which are separate to the dining room that lead towards the end of the property. This is where you'll find a large garden accompanied by a shed.

Under stair storage completes the ground floor. Leading up to the first floor is where you'll be presented with three bedrooms, two of which are well-proportioned as well as one smaller single sized room. There are also two pleasantly sized shower rooms. Swyncombe Avenue is well positioned for the amenities of Northfields, with Blondin park and Boston Manor nature trails a stones throw away and offering easy access to Northfields Station.

