



Woodgate, Flowers Drive, Lytchett Matravers, Poole, Dorset. BH16 6BX

- Detached Bungalow
- Two Bedrooms
- Large Secluded Rear Garden
- Driveway and Garage
- In Need of Cosmetic Updating Throughout
- No Forward Chain



PROPERTY DESCRIPTION

Mursells Estate Agents are pleased to offer for sale with no forward chain this delightful detached bungalow nestled within the sought after area of Flowers Drove, Lytchett Matravers. This property presents a fantastic opportunity for those seeking a project to create their ideal home.

Upon entering, you are greeted by a spacious living area offering ample room for relaxation and entertaining. The adjoining kitchen provides a functional space with potential for modernisation to suit individual tastes.

The property comprises two well-proportioned bedrooms, offering comfortable accommodation. A family bathroom completes the internal layout.

Externally, the bungalow boasts a large secluded rear garden, providing a private retreat perfect for enjoying outdoor living. Additionally, a detached garage offers convenient parking and storage solutions.

Situated in this desirable location, residents can enjoy the tranquility of village life whilst still being within easy reach of local amenities and transport links.

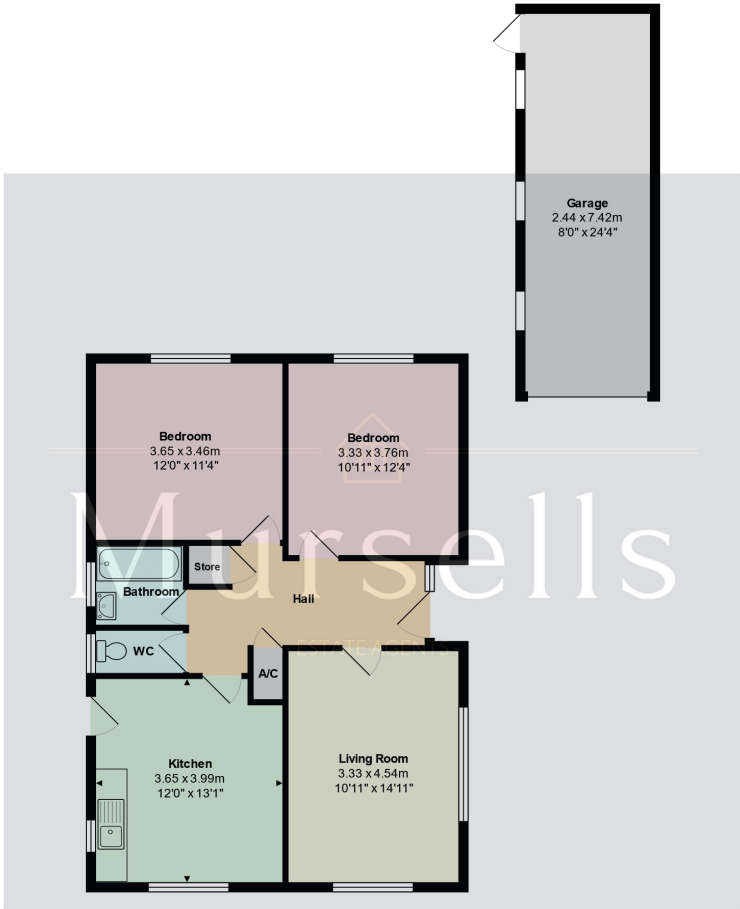
With its prime location and scope for improvement, this property represents an exciting opportunity for those looking to create their dream home. Early viewing is highly recommended to fully appreciate the potential on offer - contact Mursells Estate Agents today to book your appointment to view.



ROOM DESCRIPTIONS



FLOORPLAN & EPC



Total Area: 72.0 m² ... 775 ft² (excluding garage)
All measurements are approximate and for display purposes only

Energy Efficiency Rating		Current	Potential
Very energy efficient - lower running costs			
(92+)	A		
(81-91)	B		85
(69-80)	C		
(55-68)	D	62	
(39-54)	E		
(21-38)	F		
(1-20)	G		
Not energy efficient - higher running costs			
England, Scotland & Wales		EU Directive 2002/91/EC	

Mursells Estate Agents
8a, High Street, Lychett Matravers, BH16 6BQ
01202 018811
info@mursells.co.uk