



GREGORY BROWN
RESIDENTIAL SALES & LETTINGS

£399,950 Freehold
FOR SALE



Bremer Road, Staines-upon-Thames, Surrey, TW18 4HU

WELL PRESENTED AND SPACIOUS TWO BEDROOM END-TERRACED CHARACTER PROPERTY SITUATED ALONG THIS POPULAR ROAD IDEALLY LOCATED FOR EASY ACCESS TO STAINES TOWN CENTRE, MAINLINE TRAIN STATION, LOCAL MOTORWAY NETWORKS & HEATHROW AIRPORT. The property is in good order throughout and benefits from a spacious lounge, separate dining room, modern fitted kitchen, two double bedrooms, modern white bathroom suite and large secluded rear garden. Viewings Highly Recommended!

Gregory Brown

127a, High Street, Staines-upon-Thames, TW18 4PD

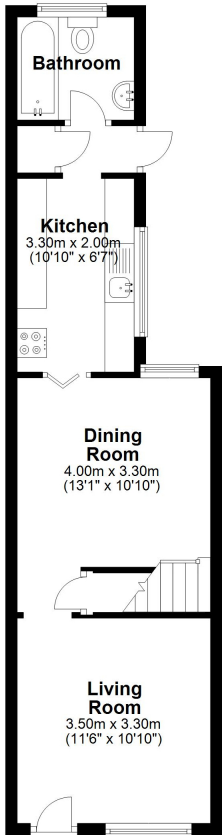
01784 451458

staines@gregory-brown.co.uk

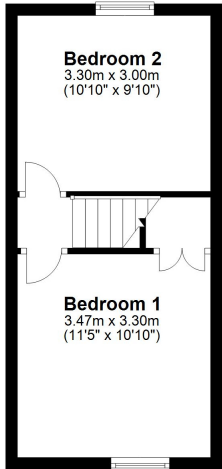
ROOM DESCRIPTIONS

FLOORPLAN

Ground Floor
Approx. 37.4 sq. metres (402.2 sq. feet)



First Floor
Approx. 24.9 sq. metres (267.9 sq. feet)



Total area: approx. 62.3 sq. metres (670.1 sq. feet)