

3 Calvie Croft, Hodge Lea, Milton Keynes, Buckinghamshire, MK12 6JZ

£205,000 Leasehold

- Ideal Investment or First Home
- First Floor with Juliet Balcony
- 2 Bedrooms
- En-suite to master
- Good condition
- Garage & Parking
- EPC- C
- Two double bedrooms
- Can rent for £1050 pcm
- EPC Rating





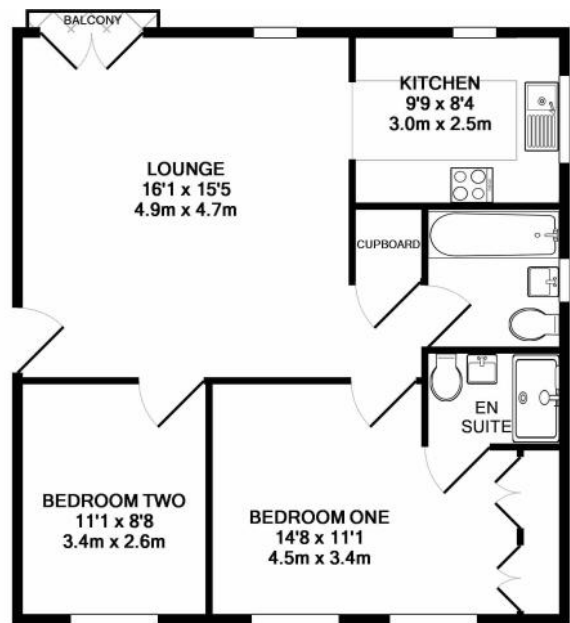
Spacious two bedroom first floor apartment with a garage and parking.

Briefly this property comprises of a spacious open plan lounge with a balcony and a green outlook. The modern kitchen has integrated appliances to include; an oven with a gas hob , a dishwasher and a fridge freezer. There are two double bedrooms, master bedroom has the luxury of en-suite shower room and finally there is the family bathroom. Unlike most apartment this one has a garage and parking.

Set in the popular area of Hodge Lea, this property has close links to Wolverton town and station. It offers lovely walks and local amenities. An ideal first home or investment!

Disclaimer

Whilst we have endeavoured to prepare our sales particulars accurately none of the services, appliances or equipment have been tested. A buyer should satisfy themselves on such matters prior to purchase. Any measurements or distances mentioned in these particulars are for guide reference only. If such particulars are fundamental to a purchase, buyers should rely on their own enquiries. All enquiries should be directed to Elevation Estate Agents in the first instance.



Whilst every attempt has been made to ensure the accuracy of the floor plan contained here, measurements of doors, windows, rooms and any other items are approximate and no responsibility is taken for any error, omission, or mis-statement. This plan is for illustrative purposes only and should be used as such by any prospective purchaser. The services, systems and appliances shown have not been tested and no guarantee as to their operability or efficiency can be given
Made with Metropix ©2019