



Tel: 01242 676767

www.cotswoldestateagents.co.uk

41a Church Road, Bishops Cleeve, Cheltenham, GL52 8LP

6, Lyndley Chase
Bishops Cleeve GL52 7YZ

£460,000



FOR SALE

Set in an enviable location on the outskirts of the village is this spacious Redrow Homes, four bedroom detached family house. The property offers comfortable well planned living accommodation featuring cloakroom, lounge, separate dining room and kitchen/breakfast room. On the first floor there is a family bathroom and four good size bedrooms the main having an en-suite. Outside a driveway for four vehicles leads to a detached garage and there is a secluded mature rear garden. ** NO ONWARD CHAIN **

Location: Bishops Cleeve, a popular village with both families and professionals alike. The centre has become a hive for activity over recent years making it extremely easy for day to day living, with two large supermarkets, excellent eateries and a lively café scene in addition to doctors' surgeries and dental surgeries'. A church, active village hall, a local secondary school reported as good and three primary schools have further secured its status as one of the more sought-after locations. Whilst beautiful walking and riding countryside surrounds the village, including Cleeve Hill, Cheltenham is only four miles away. A fashionable town with excellent leisure, shopping and cultural offerings including the many festivals it hosts. For the commuter transport links are strong with regular bus routes and easy access to the M5 Tewkesbury and M4 corridor via the A40/A419.

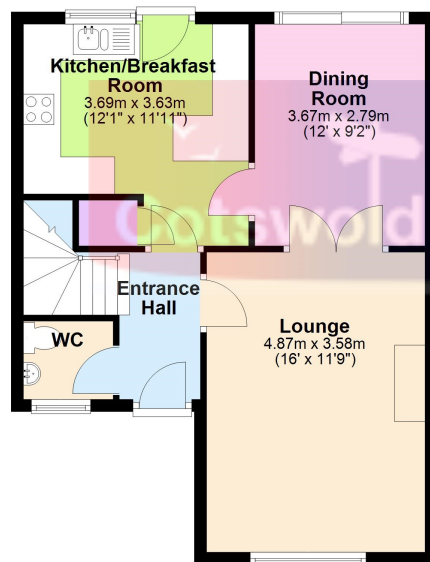
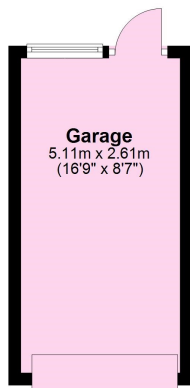






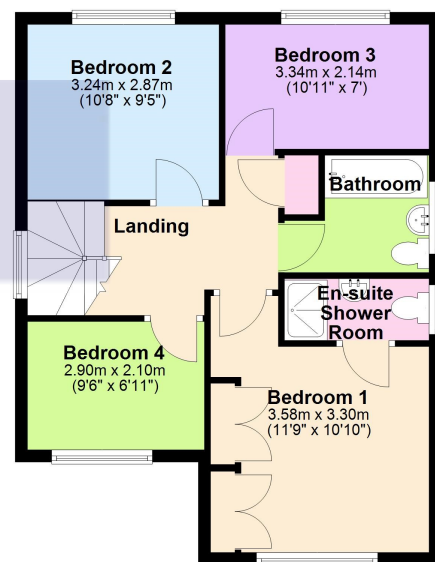
Ground Floor

Approx. 62.6 sq. metres (673.7 sq. feet)



First Floor

Approx. 52.4 sq. metres (564.4 sq. feet)



Total area: approx. 115.0 sq. metres (1238.1 sq. feet)

Energy Efficiency Rating		
	Current	Potential
Very energy efficient - lower running costs		
(92+) A		
(81-91) B		
(69-80) C	69	75
(55-68) D		
(39-54) E		
(21-38) F		
(1-20) G		
Not energy efficient - higher running costs		
England, Scotland & Wales		
	EU Directive 2002/91/EC	