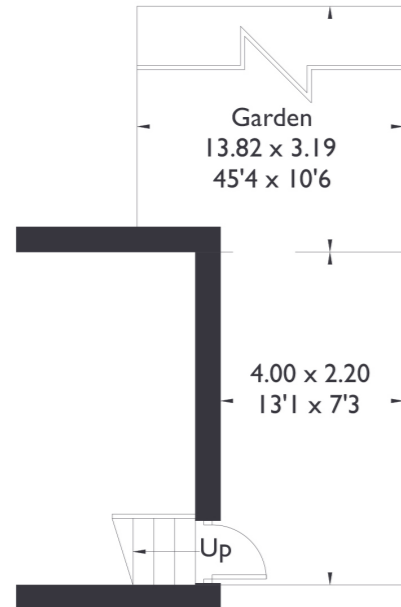


Greenford Avenue, W7

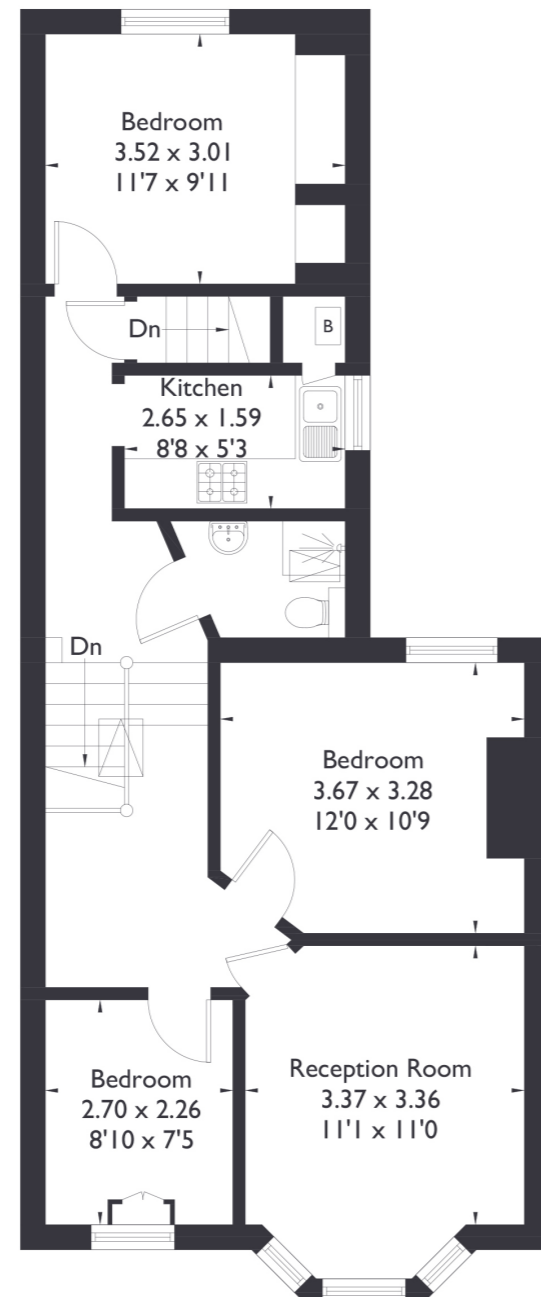
Approximate Floor Area = 71.8 sq m / 773 sq ft



Ground Floor



Ground Floor



First Floor



3 BEDROOM FLAT

Greenford Avenue, W7

GUIDE PRICE £400,000 - £425,000

Welcome to this charming three bedroom, one bathroom top floor flat nestled in a prime location. From its well presented interiors to its promising potential for extension, this property exudes opportunity and charm. The flat is situated on the top floor, however it has a wonderful private garden, offering a rare retreat amidst urban living.

FEATURES

- Three Bedrooms
- One Bathrooms
- Separate Kitchen & Living
- Private Garden
- Close To Amenities
- Hanwell Station (Elizabeth Line)
- EPC Rating C



3 BEDROOM FLAT

Greenford Avenue, W7 £400,000 - £425,000

Inside, abundant natural light streams through the bay window, illuminating the spacious rooms and creating a warm and inviting ambiance throughout.

Conveniently located just a 10 minute stroll from Hanwell Station, part of the Elizabeth Line, commuting is made effortless. Additionally, the property enjoys proximity to local amenities, ensuring a lifestyle of convenience and ease.

With its blend of character, potential, and prime location, this three bedroom flat presents an exciting opportunity for those seeking a delightful urban retreat in Hanwell.

EPC Rating C.

