



48 Thorne Crescent, Bexhill-on-Sea, East
Sussex, TN39 5JH

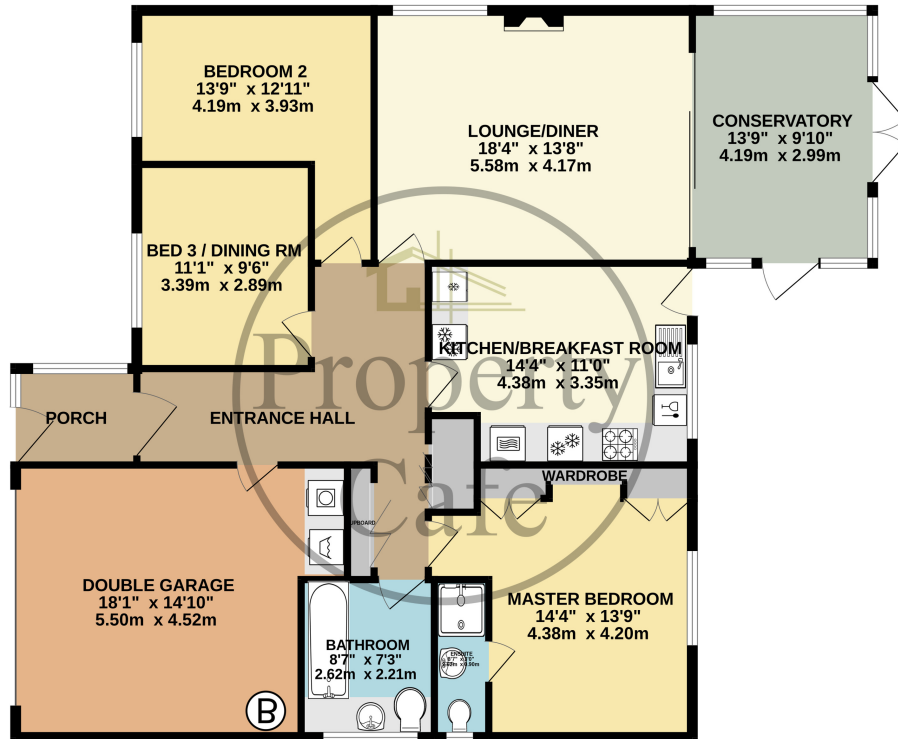
£535,000



- Spacious Three Bed Detached Bungalow
- Good Size Inner Hall & Entrance Porch
- Three Good Size Bedrooms
- Master Bedroom With & Modern En Suite
- Modern Fully Equipped Fitted Kitchen
- Immaculate Decoration Throughout
- Spacious Dual Aspect Lounge-Diner
- Modern Fitted Bathroom With Underfloor heating
- UPVC Conservatory Overlooking Garden
- Master Bedroom With Built In Wardrobes
- Spacious and bright accommodation throughout
- Double Garage & Ample Parking
- Central Heating & D.Glazed Throughout
- Landscaped Gardens To Front Side & Rear
- Timber Shed & Additional Tool Shed
- Spacious Lounge & Conservatory
- Double Garage With Electric Up & Over Door
- Sought After & Peaceful Location
- Contact Our Bexhill Team 01424 224488



GROUND FLOOR
1461 sq.ft. (135.7 sq.m.) approx.



TOTAL FLOOR AREA : 1461 sq.ft. (135.7 sq.m.) approx.

Whilst every attempt has been made to ensure the accuracy of the floorplan contained here, measurements of doors, windows, rooms and any other items are approximate and no responsibility is taken for any error, omission or mis-statement. This plan is for illustrative purposes only and should be used as such by any prospective purchaser. The services, systems and appliances shown have not been tested and no guarantee as to their operability or efficiency can be given.
Made with Metropix 5.0.0.24

