



TALBOT SKYLINE, IMPERIAL DRIVE, HARROW

£240,000

A spacious and well maintained one bedroom first floor flat conveniently located 0.1 miles from Rayners Lane Metropolitan/Piccadilly line station. The property briefly comprises entrance hallway with large storage cupboard, light filled open plan living room/fitted kitchen with fitted appliances, master bedroom with walk in wardrobe and study area and a contemporary shower room. Further benefits include 118 year lease remaining, secure communal entrance into foyer and video phone entry system.

- ONE BEDROOM FIRST FLOOR FLAT
- SPACIOUS AND WELL MAINTAINED THROUGHOUT
- OPEN PLAN LIVING ROOM/KITCHEN
- MODERN FITTED KITCHEN WITH INTEGRATED APPLIANCES
- DOUBLE BEDROOM WITH WALK-IN WARDROBE AND STUDY AREA
- CONTEMPORARY SHOWER ROOM
- CONVENIENTLY LOCATED WITHIN 0.1 MILES OF RAYNERS LANE METROPOLITAN AND PICCADILLY LINE STATION
- SECURE VIDEO PHONE ENTRY SYSTEM
- 118 YEAR LEASE REMAINING

First Floor

Hallway

Entrance into hallway via front aspect door, spot lighting, wall mounted fuse box, storage cupboard housing water tank, wall mounted video phone entry system, power point, laminate flooring.

Open Plan Living Room/ Kitchen

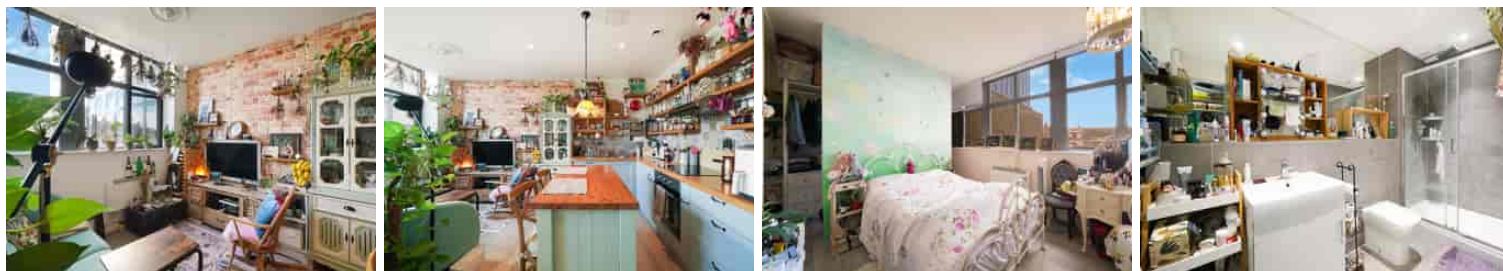
15' 6" x 15' 2" (4.72m x 4.62m) Rear aspect double glazed window, spot lighting, range of wall and base level units with wooden square edge work tops, central island, integrated single sink with drainer, integrated electric hob with oven below and overhead extractor fan, integrated fridge/freezer, integrated dishwasher, integrated washing machine, part tiled walls, TV aerial, phone point, wall mounted electric storage heater, laminate flooring.

Bedroom

15' 4" max x 14' 2" max (4.67m x 4.32m) Rear aspect double glazed window, feature dividing wall, walk-in wardrobe and study area, TV aerial, phone point, wall mounted electric storage heater, laminate flooring.

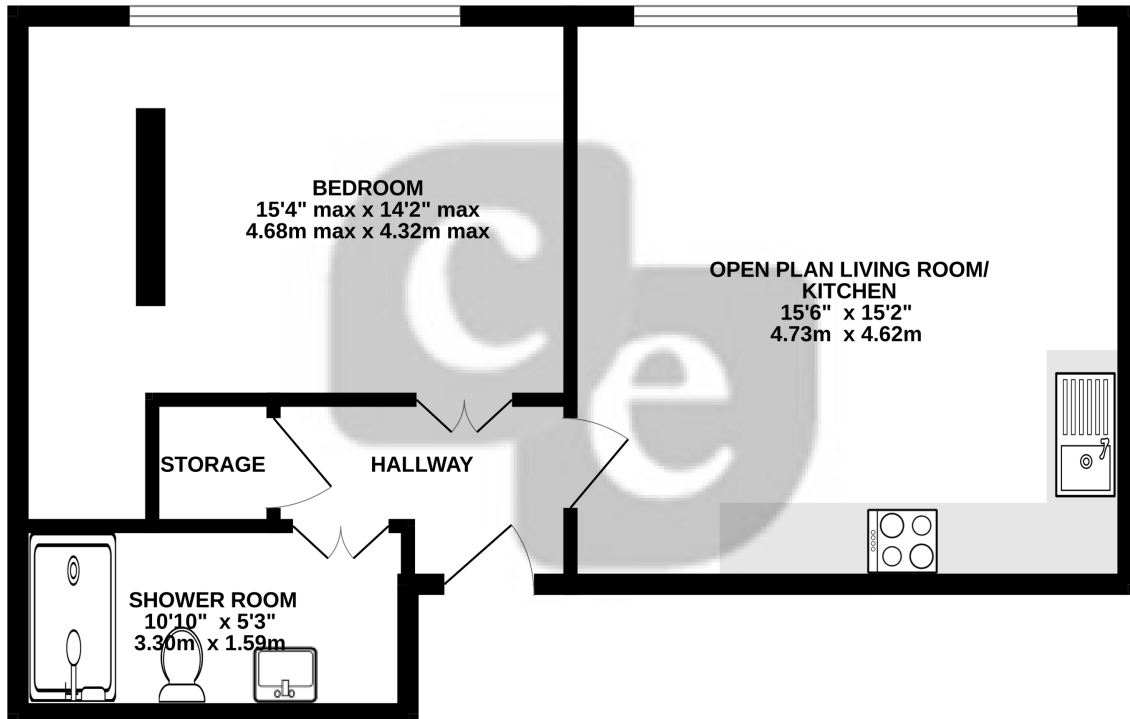
Shower Room

10' 10" x 5' 3" (3.30m x 1.60m) Low level W/C, vanity hand wash basin, double shower with glass shower doors, fully tiled surround, wall mounted shower with attachment, overhead shower, wall mounted integrated mirror, extractor fan, spot lighting, part tiled walls, wall mounted heated towel rail, tiled flooring.



DISCLAIMER: These particulars, whilst believed to be accurate are set out as a general outline only for guidance and do not constitute any part of an offer or contract. Intending purchasers should not rely on them as statements or representation of fact, but must satisfy themselves by inspection or otherwise as to their accuracy. We have not carried out a detailed survey nor tested the services, appliances and specific fittings. Room sizes should not be relied upon for carpets and furnishings. The measurements given are approximate. No person in this firms employment has the authority to make or give any representation or warranty in respect of the property.

FIRST FLOOR
521 sq.ft. (48.4 sq.m.) approx.



TOTAL FLOOR AREA : 521 sq.ft. (48.4 sq.m.) approx.

Whilst every attempt has been made to ensure the accuracy of the floorplan contained here, measurements of doors, windows, rooms and any other items are approximate and no responsibility is taken for any error, omission or mis-statement. This plan is for illustrative purposes only and should be used as such by any prospective purchaser. The services, systems and appliances shown have not been tested and no guarantee as to their operability or efficiency can be given.
Made with Metropix ©2025