

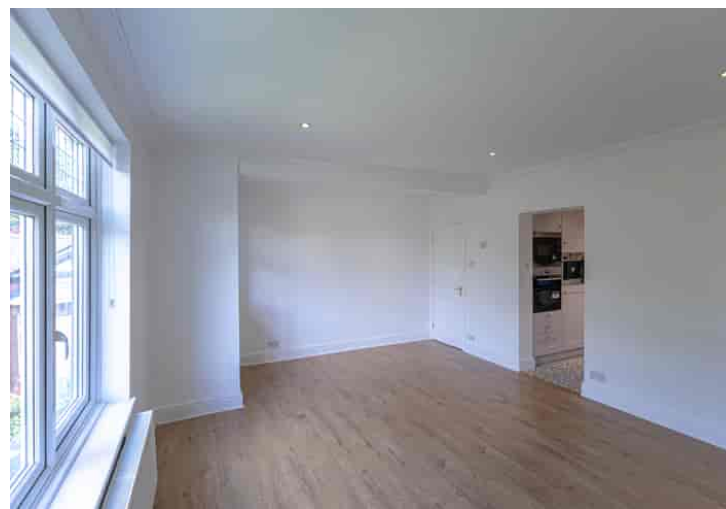




- First Floor Apartment
- Set Within Converted Grand Manor house
- Large Living Room
- Fitted & Equipped Kitchen
- Double Bedroom
- Luxury Shower Room
- Communal Gardens & Parking
- Private Garage

Description

Daleford Manor, is a fine period country manor house, which has been converted into apartments. The property is set within beautiful landscaped gardens with mature trees and shrubs, with the owner of this property being able to enjoy the use of the front and side gardens. There is also ample communal parking and the apartment comes with a single garage. A real sense of grandeur greets you as you enter the property with a communal porch and stair hall. This property is located on the first floor to the rear of the house and enjoys views over the rear garden. The apartment comprises: A long entrance hall, a large living room, a fitted and equipped kitchen, a double bedroom with fitted wardrobes and a luxury shower room.



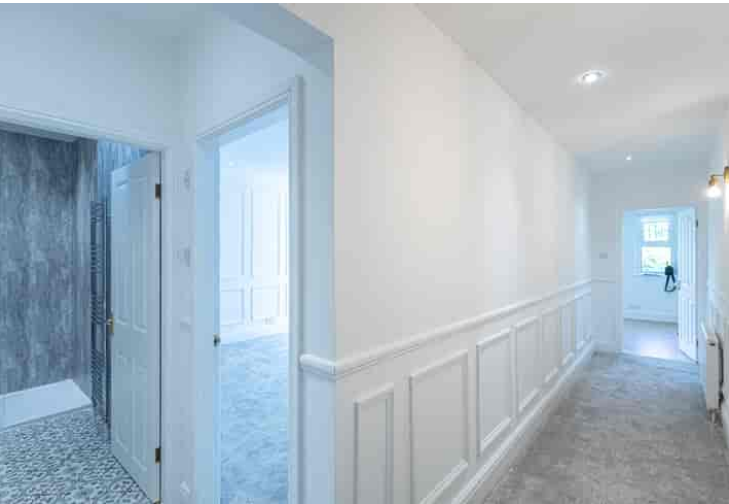
Location

The property is located midway between the village of Whitegate and Sandiway. Local amenities are available in Sandiway and include a shopping parade, where you will find a Spar Supermarket, Rowlands Pharmacy, Littlers Butchers, a couple of fast food takeaways and beauty salons/hairdresser. Sandiway Library is also in the centre. There is a railway station in Cuddington with trains running to Manchester and Chester and the main West Coast Main Line service is available from either Hartford or Acton Bridge, enabling access to London within two hours. The A556 and A49 easily facilitate access to the region’s major road network with Manchester and Liverpool airports both within 20 miles. There are two well regarded Primary Schools in the village with Weaverham High School close by. Nearby Northwich caters for a more comprehensive range of amenities, including leading supermarkets with Waitrose, Sainsbury's and Tesco all represented.

Tenure

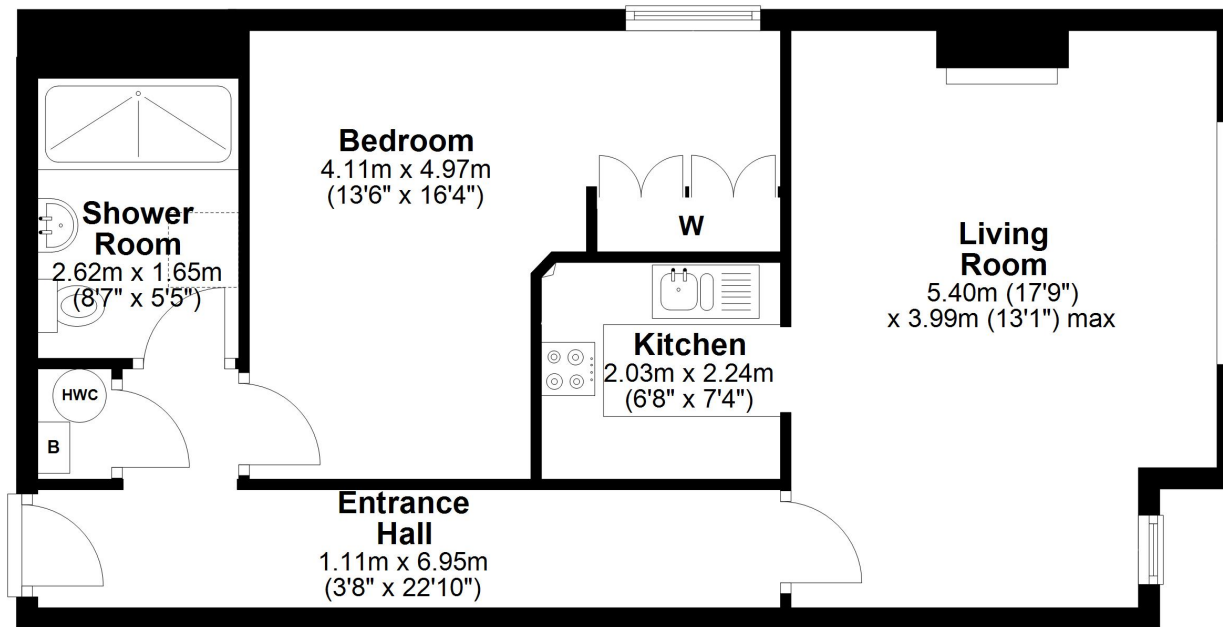
LEASEHOLD

EPC Rating: D



First Floor

Approx. 57.8 sq. metres (622.3 sq. feet)



Total area: approx. 57.8 sq. metres (622.3 sq. feet)

Williams Estates is the trading name of Williams Estates (Ltd). Registered address 33, The Green, Hartford, Northwich, Cheshire, CW8 1QA.

Reg number 07682683. Director Andrew P Williams



These particulars, whilst believed to be accurate are set out as a general outline only for guidance and do not constitute any part of an offer or contract. Intending purchasers should not rely on them as statements of representation of fact, but must satisfy themselves by inspection or otherwise as to their accuracy. All measurements quoted are approximate. We are unable to confirm the working order of any fixtures and fittings including appliances that are included in these particulars. No person in this firm's employment has the authority to make or give any representation or warranty in respect of the property.