



20 Four Oaks Park
Eye Road
Brome
Eye
Suffolk
IP23 8AL

Offers in Excess of £124,000

bettermove 

Eye Road Eye

Bettermove are proud to present this 2 bedroom detached Park Home in Brome available with no forward chain and welcoming cash buyers only.

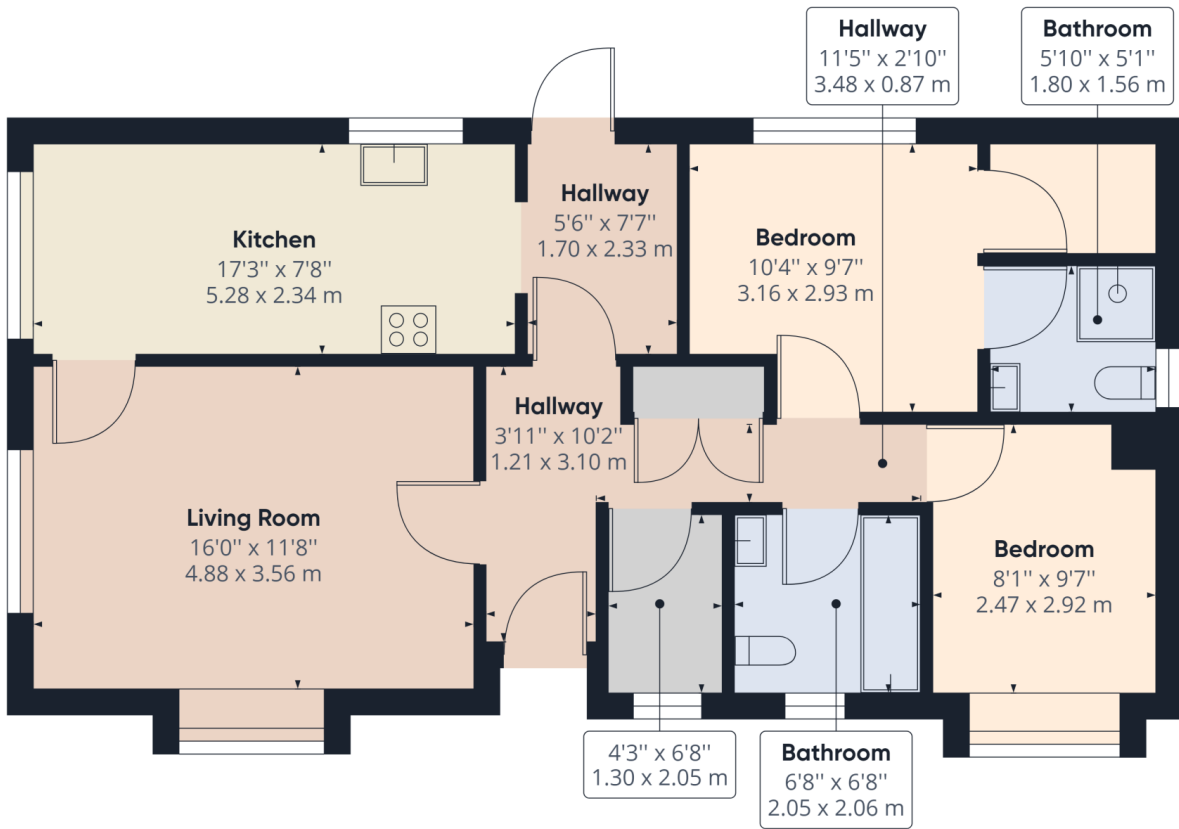
The property benefits from double glazing, LPG heating and has an off road parking available. The council tax band is A.

This is a Leasehold plot (Freehold building), Ground rent approximately £220 per month to include water and park maintenance.

The interior of this property consists of the spacious living room, the fitted kitchen, two bedrooms including the master bedroom with an ensuite bathroom and the family bathroom. There is ample storage space throughout the property. The exterior of the property boasts a private garden with patio area and shed.

This exciting opportunity should not be missed! All enquiries can be made through Bettermove on 0330 004 0050.





Approximate total area⁽¹⁾
 776.29 ft²
 72.12 m²

(1) Excluding balconies and terraces

While every attempt has been made to ensure accuracy, all measurements are approximate, not to scale. This floor plan is for illustrative purposes only.

GIRAFFE360



20-22 Bridge End, Leeds, LS1 4DJ
t: 0330 004 0050 e: hello@bettermove.co.uk
www.bettermove.co.uk