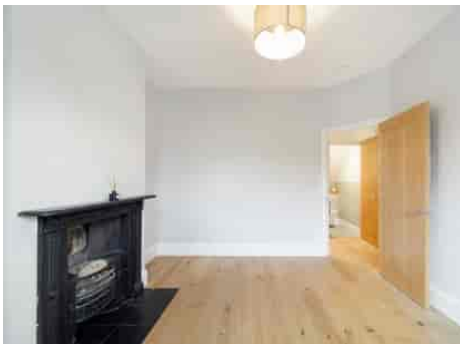


# Truuli



## Boxall Road, London, SE21 7JS

£4,000 pcm Freehold

- Sought after location
- Close to an array of prestigious schools
- Excellent and efficient transport links
- Available immediately
- Excellent condition throughout
- Ample storage space

Southbridge Place, Surrey, CR0 4HA

Tel: 0330 043 0002

Email: [save@truuli.co.uk](mailto:save@truuli.co.uk) Web: [www.truuli.co.uk](http://www.truuli.co.uk)

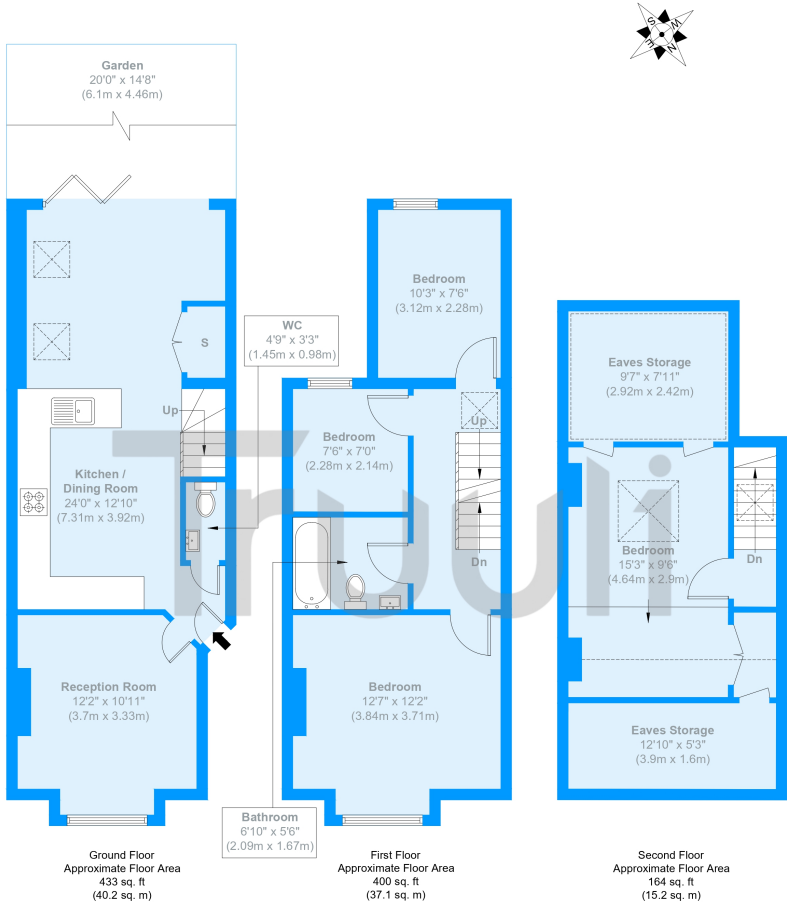
# Boxall Road, London, SE21 7JS

£4,000 pcm Freehold

Located on the desirable Boxall Road in the heart of SE21, this three-bedroom home offers a rare chance to secure a beautifully situated property in one of South London's most sought-after residential neighbourhoods. Just moments from the picturesque Dulwich Village, you'll have easy access to boutique shops, independent cafés, leafy parks and a warm community atmosphere.

Excellent transport connections are within easy reach, with North Dulwich, West Dulwich and Herne Hill stations providing quick links to London Bridge, Victoria, and central London. A range of bus services also ensures convenient travel across South London.

## Boxall Road



Approximate Gross Internal Area = 92.5 sq m / 997 sq ft  
Restricted head height / Eaves Storage = 16.8 sq m / 181 sq ft  
Total = 109.3 sq m / 1178 sq ft

The Floor plan is not to scale and measurements and areas shown are approximate and therefore should be used for illustrative purposes only. The plan has been prepared in accordance with the RICS code of Measuring Practice and whilst we have confidence in the information produced it must not be relied on. Maximum lengths and widths are represented on the floor plan. If there is any aspect of particular importance, you should carry out or commission your own inspection of the property.  
Copyright @ BleuPlan

