



Offers Over £550,000



47 Chestnut Drive, Bexleyheath, Kent  
DA7 4EW





## PROPERTY DESCRIPTION

OPEN HOUSE • Saturday 12 March • 1:00pm - 2:00pm • RE/MAX SELECT are delighted to offer for sale this extended semi-detached house, situated on a popular residential road close to schools, amenities, and transportation links including Bexleyheath station. This spacious property comprises 4 double bedrooms, through-lounge, large kitchen, upstairs family bathroom, and downstairs shower room.

Further benefits include integral garage, 40ft south-facing garden, and off street parking for 3 cars. Total Internal Area approx: 1,188.12 sq ft (110.38 sq m). CHAIN FREE.

## FEATURES

- Extended 1930s Semi-Detached House
- 4 Double Bedrooms
- Upstairs Family Bathroom
- Downstairs Shower Room
- Off Street Parking for 3 Cars
- South Facing Garden
- CHAIN FREE
- \*VIDEO TOUR AVAILABLE\*





## ROOM DESCRIPTIONS

### Ground Floor

#### Entrance Hall

Carpeted, radiator, ceiling coving.

#### Through Lounge

Carpeted, radiator, ceiling coving; dual-aspect double glazed windows; fireplace with brick surround; double glazed patio doors leading to Rear Garden.

#### Kitchen

Vinyl flooring, ceiling coving, double glazed windows; range of wood wall and base units with granite-effect worktops; stainless steel sink and drainer unit with mixer tap; space and connections for cooker; space for fridge/freezer; space and connections for washing machine; double glazed patio door leading to Rear Garden.

#### Shower Room

Leading from Integrated Garage; fully tiled; wet-room shower; wash-hand basin with mixer tap; w/c, extractor fan.

#### Integrated Garage

Leading from Entrance Hall; electrical power; up-and-over door.

### First Floor

#### Landing

Carpeted; access to loft.

#### Bedroom

Carpeted, radiator, ceiling coving, double glazed bay window.

#### Bedroom

Carpeted, radiator, ceiling coving, double glazed windows.

#### Bedroom

Carpeted, radiator, double glazed windows.

#### Bedroom.

Carpeted, radiator, double glazed windows.

#### Family Bathroom

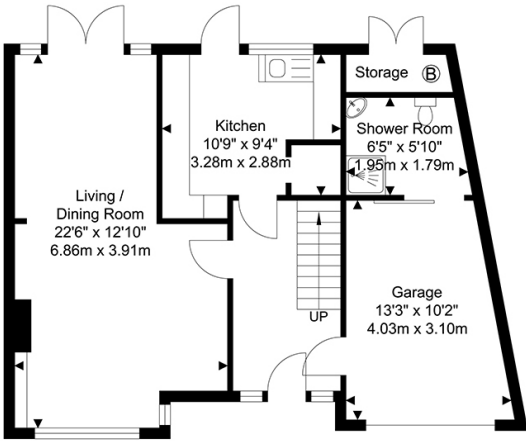
Fully tiled, double glazed windows; bath with shower-mixer; wash-hand basin with mixer tap; w/c.

### External

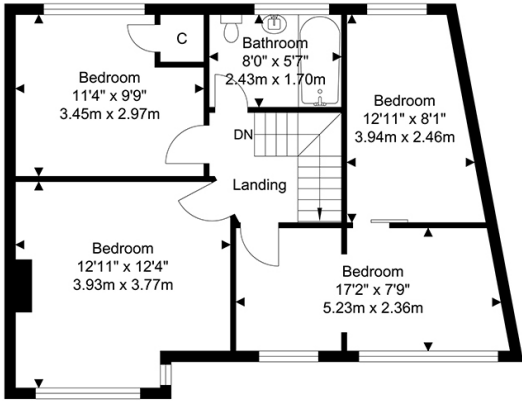
#### Front Driveway

Off street parking for 2 cars.

FLOORPLAN



Ground Floor  
Approximate Floor Area  
602.77 SQ.FT.  
(56.00 SQ.M.)



First Floor  
Approximate Floor Area  
585.34 SQ.FT.  
(54.38 SQ.M.)

TOTAL APPROX FLOOR AREA 1188.12 SQ. FT / 110.38 SQ. M  
For Identification Purposes Only.

