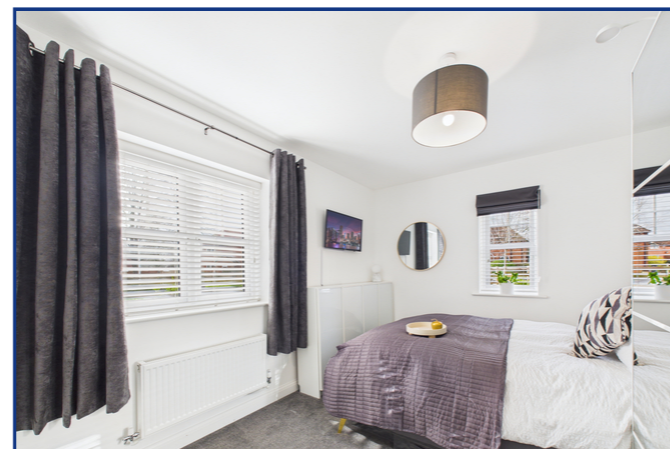


Flat 2, 4 Montgomery House, Equestrian Court,  
Arborfield Green, Reading, Berkshire. RG2 9ZN.



3 Maiden Lane Centre  
Berkshire  
Reading RG6 3HD  
Tel: 0118 926 8260  
www.arins.co.uk



Flat 2, 4 Montgomery House, Equestrian Court,  
Arborfield Green, Reading, Berkshire. RG2 9ZN.

£280,000 Leasehold

\*\*\*NO ONWARD CHAIN\*\*\* This attractive ground floor apartment offers contemporary living in a highly convenient location, making it an ideal choice for first-time buyers, professionals, downsizers or investors alike. The property is accessed via a welcoming entrance hall leading through to a spacious open-plan living, dining and kitchen area, finished in modern, neutral décor and designed to maximise both space and natural light. The kitchen is well equipped with integrated appliances and ample storage, creating a stylish yet practical hub for everyday living and entertaining. There are two generous double bedrooms, both well proportioned and versatile in use, alongside a modern family bathroom fitted with contemporary fixtures and finishes. A large storage cupboard further enhances the practicality of the home. Residents benefit from allocated parking, providing ease and convenience for those with vehicles. The property's prime location offers excellent access to local amenities, shops and transport links, making it perfect for those seeking a well-connected and low-maintenance lifestyle. With its modern design and desirable setting, this apartment presents a fantastic opportunity to secure a comfortable and stylish home.

- Ground Floor Apartment
- Two Double Bedrooms
- Modern Open Plan Living
- Large Living Space
- Modern Bathroom
- Allocated Parking
- Access to Reading & Wokingham
- Near Shops, Schools and Amenities

These particulars, whilst believed to be accurate are set out as a general outline only for guidance and do not constitute any part of an offer or contract. Intending purchasers should not rely on them as statements or representation of fact, but must satisfy themselves by inspection or otherwise as to their accuracy. We have not carried out a detailed survey nor tested the services, appliances and specific fittings. Room sizes should not be relied upon for carpets and furnishings. The measurements given are approximate. No person in this firm's employment has the authority to make or give any representation or warranty in respect of the property.

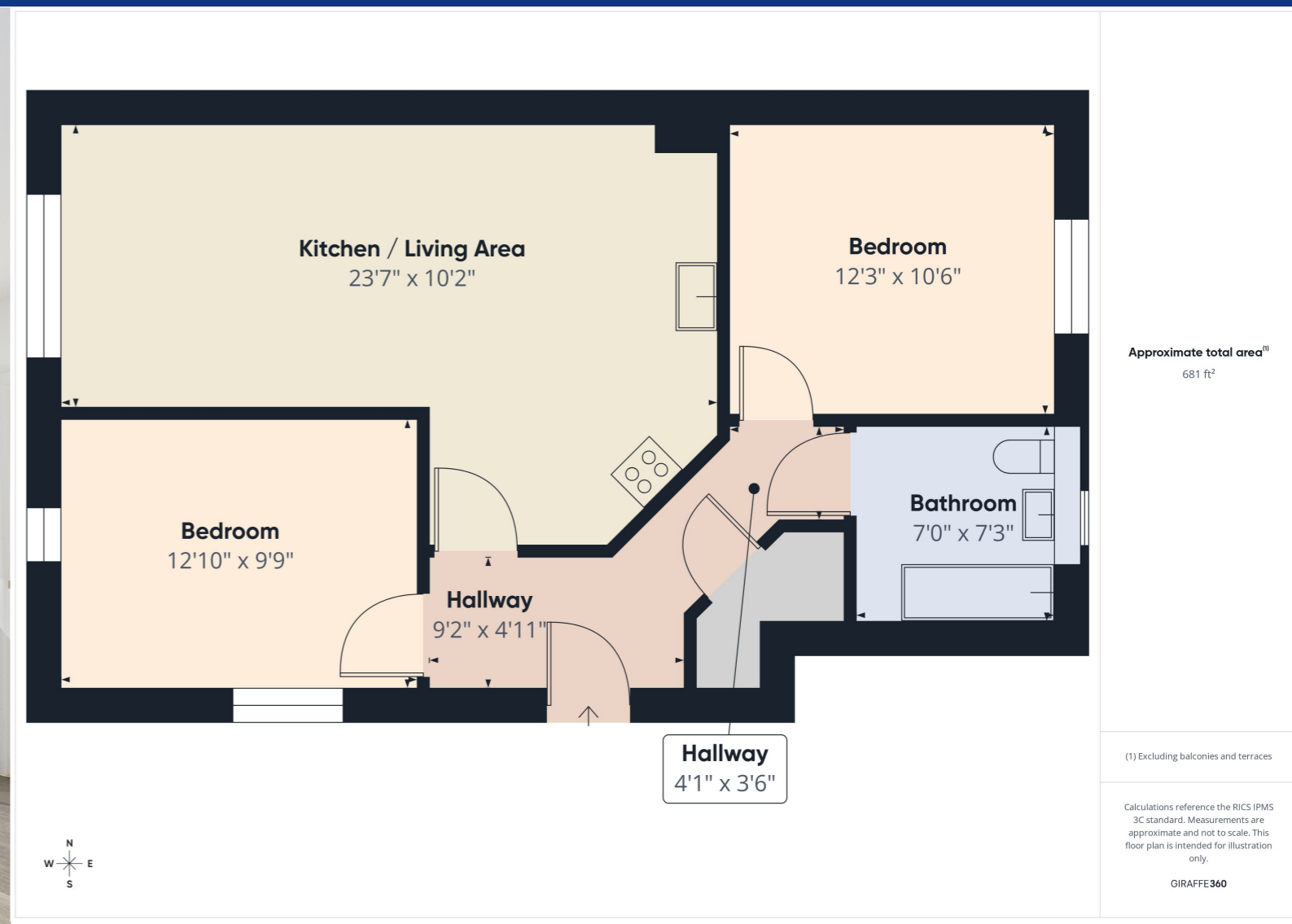


Covering Reading, Earley, Lower Earley, Tilehurst, Woodley, Shinfield, Caversham and all other surrounding areas

Flat 2, 4 Montgomery House, Equestrian Court,  
Arborfield Green, Reading, Berkshire. RG2 9ZN.



Have you visited our website for our latest property listings?  
www.arins.co.uk



Property Description

Council Tax Band

C

