



Day & Co
ESTATE AGENTS

28 Cavendish Street

Keighley

BD21 3RG



2 Millfields, Silsden, Keighley,
West Yorkshire, BD20 0DT

£199,995

T: 01535 664609

W: www.dayandcoestateagents.co.uk

E: keighley@dayandcoestateagents.co.uk

- EPC rating Is C
- Two Bedrooms
- Parking For Four Vehicles

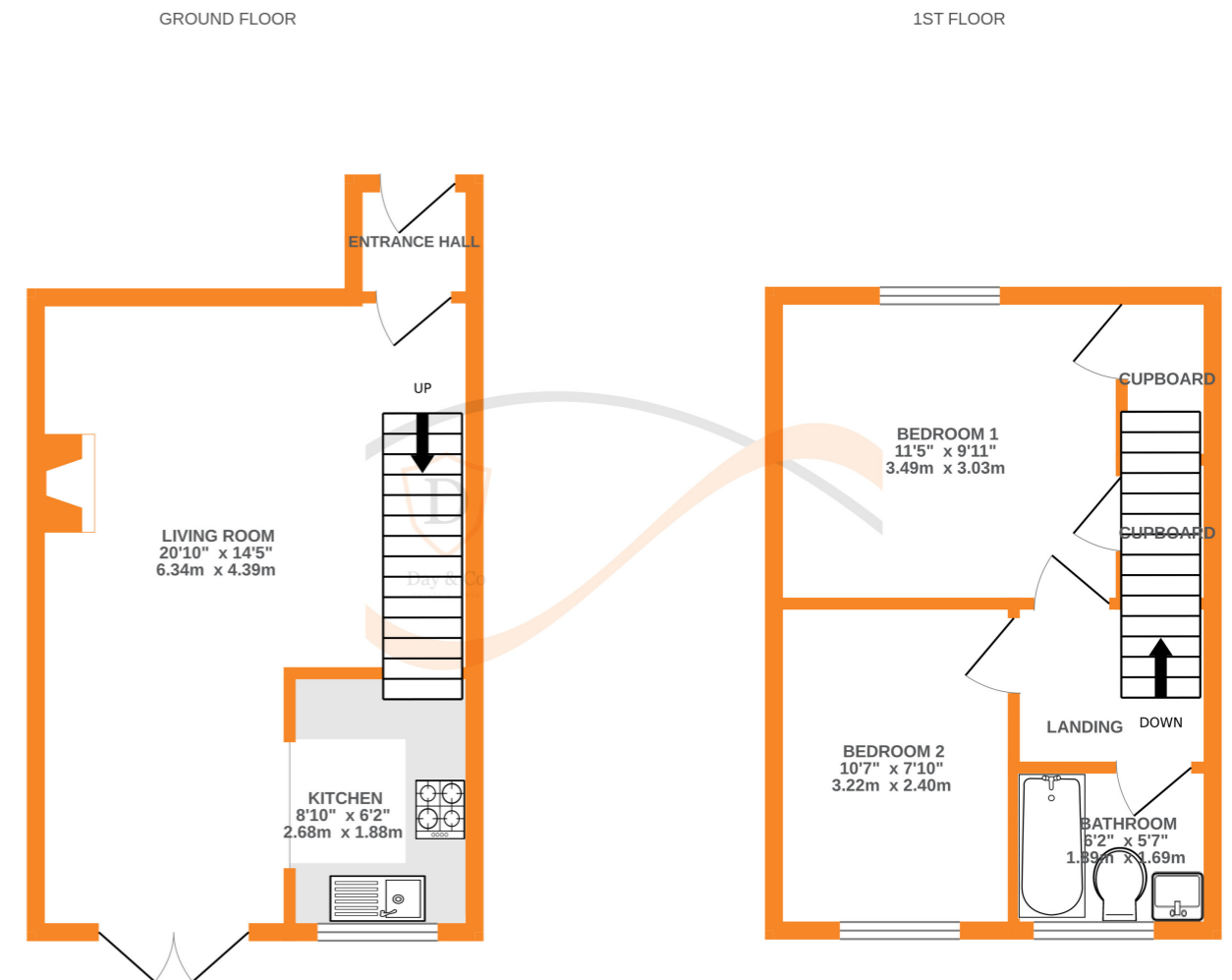
- Superbly Presented Semi-Detached
- Modern Fitted Kitchen & Bathroom
- Well Maintained Rear Patio With Spacious Outbuilding

SUMMARY

A SUPERBLY PRESENTED 2 BEDROOM SEMI-DETACHED PROPERTY, EVER POPULAR VILLAGE OF SILSDEN WITH EXCELLENT ACCESS TO VILLAGE AMENITIES!! Having modern fitted kitchen & bathroom, parking for 4 vehicles, well maintained rear patio with spacious outbuilding - VIEWING ESSENTIAL TO FULLY APPRECIATE!! EPC Rating Is C.

FULL DESCRIPTION

Of interest to a variety of buyers is this immaculately presented two bedroom semi-detached property situated in the popular village of Silsden with excellent access to village amenities. The property has been fully refurbished and the accommodation comprises of an entrance porch leading into the spacious through lounge/diner having a living flame gas coal effect fire, radiator, double glazed window to the front and double glazed patio doors leading to the rear garden. The kitchen has an attractive range of modern base and wall mounted units, integrated appliances to include oven, hob, extractor fan, dishwasher, washer dryer, fridge and freezer. To the first floor there are two bedrooms, and the bathroom which has a three piece modern suite in white comprising of a 'P' bath with shower over, WC, wash hand basin. Externally the property offers ample parking with a block paved drive for four vehicles, there is a well maintained rear patio with spacious outbuilding. Viewing essential to fully appreciate, EPC rating is C.



Whilst every attempt has been made to ensure the accuracy of the floorplan contained here, measurements of doors, windows, rooms and any other items are approximate and no responsibility is taken for any error, omission or mis-statement. This plan is for illustrative purposes only and should be used as such by any prospective purchaser. The services, systems and appliances shown have not been tested and no guarantee as to their operability or efficiency can be given.
Made with Metropix ©2024