

Upper Marsh Road

Warminster, BA12 9PW

COOPER
AND
TANNER



£229,950 Freehold

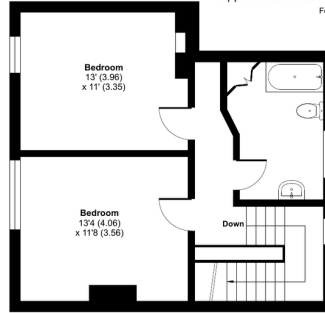
🛏 2 🛋 1 🚿 1 EPC C

Description

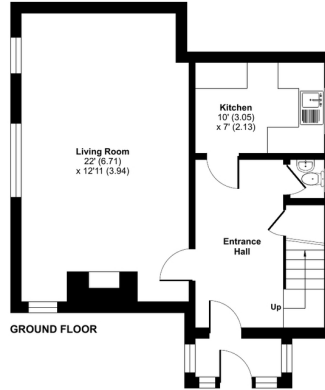
This two bedroom semi detached cottage is quietly tucked away in the small development of Henford Mews with far reaching views across to Woods and open countryside. It offers good sized accommodation throughout and has scope for further improvements. There is allocated parking for one car. The property comprises an entrance porch, inner hall with a downstairs cloakroom, large sitting room/ dining room, kitchen with wall and base units, space for washing machine, cooker and fridge. Door to inner hallway. Leading upstairs there are two double bedrooms and a family bathroom. Outside there is allocated parking for one car and communal gardens.

Upper Marsh Road, Warminster, BA12

Approximate Area = 1010 sq ft / 93.8 sq m
For identification only - Not to scale



FIRST FLOOR



GROUND FLOOR



Floor plan produced in accordance with RICS Property Measurement Standards incorporating International Property Measurement Standards (IPMS Residential). ©richecom 2024. Produced for Cooper and Tanner. REF: 1088166



Features

- Semi detached cottage
- Scope for improvement
- Two double bedrooms
- Large family bathroom
- Downstairs cloakroom
- Allocated parking
- Lounge / dining room
- Parking for one car

Local Information

- Council Tax Band D
- Tenure Freehold
- EPC Rating C

WARMINSTER OFFICE

Telephone 01985 215579

48-50, Market Place, Warminster, Wiltshire BA12 9AN

warminster@cooperandtanner.co.uk

COOPER
AND
TANNER

Important Notice: These particulars are set out as a general outline only for the guidance of intended purchasers and do not constitute, nor constitute part of, an offer or contract. All descriptions, dimensions, reference to condition and necessary permissions for use and occupation, warranties and other details are given without responsibility and any intending purchasers should not rely on the m as statements or rep representations of fact but must satisfy themselves by inspection or otherwise as to the correctness of each of them.

