



23 Park Road
Widnes, WA8 6HF



0151 424 5100
info@mylerestates.com



Park Road

Widnes, WA8 6HF

£119,950

Offered to market NO CHAIN THREE BEDROOM MID TERRACE PROPERTY, Located within walking distance of the TOWN CENTRE, Close to local amenities, shops, schools, pubs & restaurants. The property would make a GREAT FIRST TIME BUYER OR INVESTMENT OPPORTUNITY. To see the property's full potential please call our office to secure your viewing on 0151 424 5100.





Ground Floor

Entrance Hall

Entered via UPVC double glazed door, laminate to floor, ceiling lights, radiator, stairs to first floor, door to lounge.

Lounge

3.65m x 3.35m (12' 0" x 11' 0")

Laminate to floor, ceiling light, radiator, UPVC double glazed window, pebble effect electric fire, double doors leading to dining room.

Dining Room

3.93m x 3.41m (12' 11" x 11' 2")

Laminate to floor, ceiling light, radiator, UPVC double glazed window, door to kitchen.

Kitchen

3.45m x 2.61m (11' 4" x 8' 7")

Vinyl to floor, ceiling spot lights, radiator, UPVC double glazed window, kitchen comprises of a range of wall and base units with work surface over, stainless steel sink with mixer tap, stainless steel oven, gas hob & extractor canopy. Space for washing machine & fridge freezer. Door to rear hall.



Rear Hall

Tiles to floor, ceiling light, storage cupboard, door to bathroom, UPVC double glazed door to rear yard.

Bathroom

Tiles to floor, ceiling light, radiator, UPVC double glazed window, bath with electric shower over, vanity hand wash basin, low level W/C.

First Floor

Stairs & Landing

Carpet to floor, ceiling light, radiator, doors to three bedrooms.

Bedroom One

4.41m x 3.64m (14' 6" x 11' 11")

Carpet to floor, ceiling light, radiator, UPVC double glazed window.

Bedroom Two

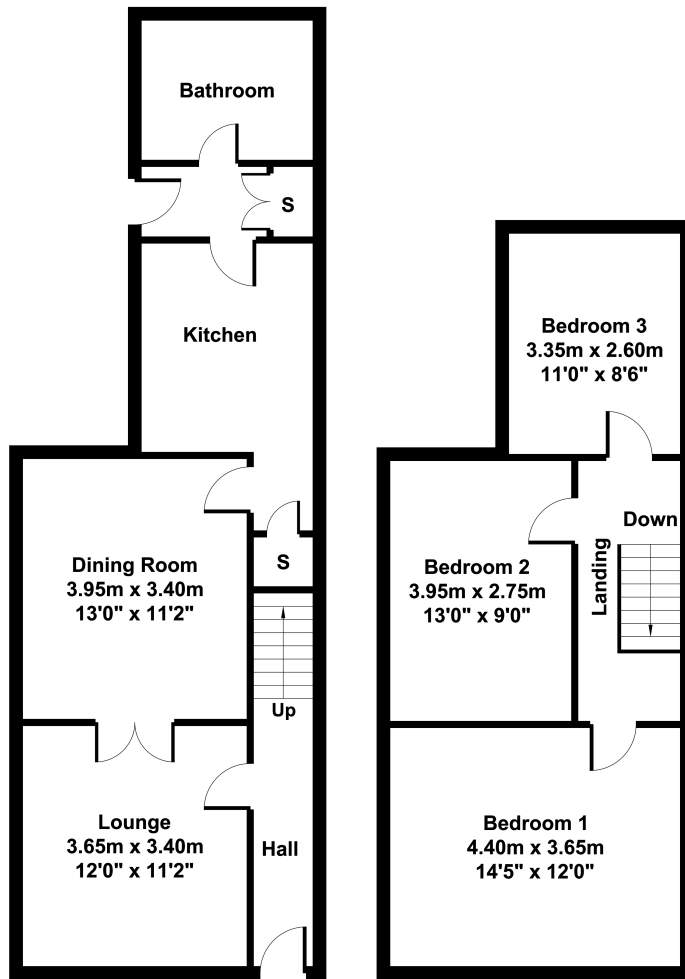
3.87m x 2.76m (12' 8" x 9' 1")

Carpet to floor, ceiling light, radiator, UPVC double glazed window.

Bedroom Three

3.32m x 2.61m (10' 11" x 8' 7")

Carpet to floor, ceiling light, radiator, UPVC double glazed window.



Ground Floor

First Floor



Myler & Co

77, Albert Road, Widnes, Cheshire, WA8 6JS

0151 424 5100

info@mylerestates.com