



Ashfield Drive, Letchworth Garden City SG6 1GU





2 Bedroom Apartment £104,000 Leasehold

SHARED OWNERSHIP: 40% Share up-to FULL OWNERSHIP available . This modern two bedroom apartment is just minutes from Letchworth High Street. Featuring a fully fitted kitchen, spacious rooms, and bright living area. Includes allocated parking for added convenience. Ideal for modern living in a prime location.



- Shared ownership - 40% and higher share available
- Full ownership available: £260,000
- Modern apartment
- Close to town and mainline station
- Well presented throughout
- Bright and spacious
- Off street parking
- EPC rating B. Council tax band C

Ground Floor:**Hallway:**

Access to all rooms. Intercom. Access to cupboard. Spotlights. Wooden flooring.

Living Room:

Abt. 10' 2" x 11' 7" (3.10m x 3.53m) Double glazed windows. Ceiling light fitting. Central heating radiator. Carpet flooring

Kitchen:

Abt, 13' 3" x 12' 2" (4.04m x 3.71m) Double glazed window. Selection of wall and base units. Partly tiled walls. Integrated oven. Gas hob. Stainless steel sink with hot and cold taps. Plumbing for washing machine. Ceiling light fitting. Central heating radiator. Wooden flooring.

Bedroom One:

Abt. 11' 3" x 10' 8" (3.43m x 3.25m) Double glazed window. Ceiling light fitting. Central heating radiator. Carpet flooring.

Bedroom Two:

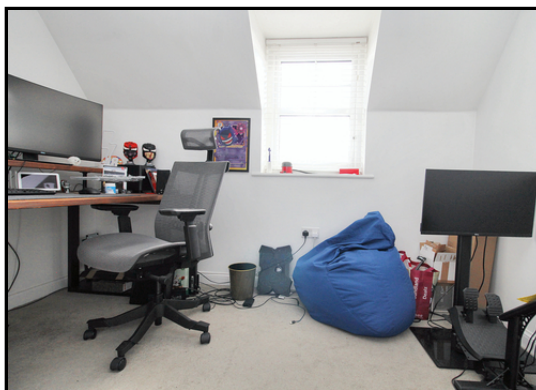
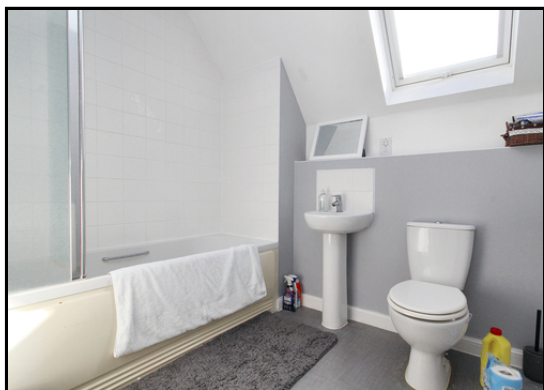
Abt. 8' 0" x 10' 5" (2.44m x 3.17m) Double glazed windows. Ceiling light fitting. Carpet flooring.

Bathroom:

Velux window. Partly tiled with suite comprising wash hand basin, low level dual flush WC and bath tub with shower fitting and glass screen. Tiled flooring.

Additional Information:**Agents Note:**

Draft details yet to be approved by the vendor and may be subject to change.



These particulars are a guide only and do not constitute an offer or a contract. The floor plan is for identification purposes only and not to scale. All measurements are approximate and should not be relied upon if ordering furniture, white goods and flooring etc. We have presented the property as we feel fairly describes it but before arranging a viewing or deciding to buy, should there be anything specific you would like to know about the property please enquire. Satchells have not tested any of the appliances or carried out any form of survey and advise you to carry out your own investigations on the state, condition, structure, services, title, tenure, and council tax band of the property. Some images may have been enhanced and the contents shown may not be included in the sale. Satchells routinely refer to 3rd party services for which we receive an income from their fee. If you would like us to refer you to one of these services please ask one of our staff who will pass your details on. We advise you check the availability of the property on the day of your viewing.



Ground Floor



For illustrative purposes only - NOT TO SCALE - Measurements shown are approximate. The size and position of doors, windows, appliances and other features are approximate.
Plan produced using PlanUp.