

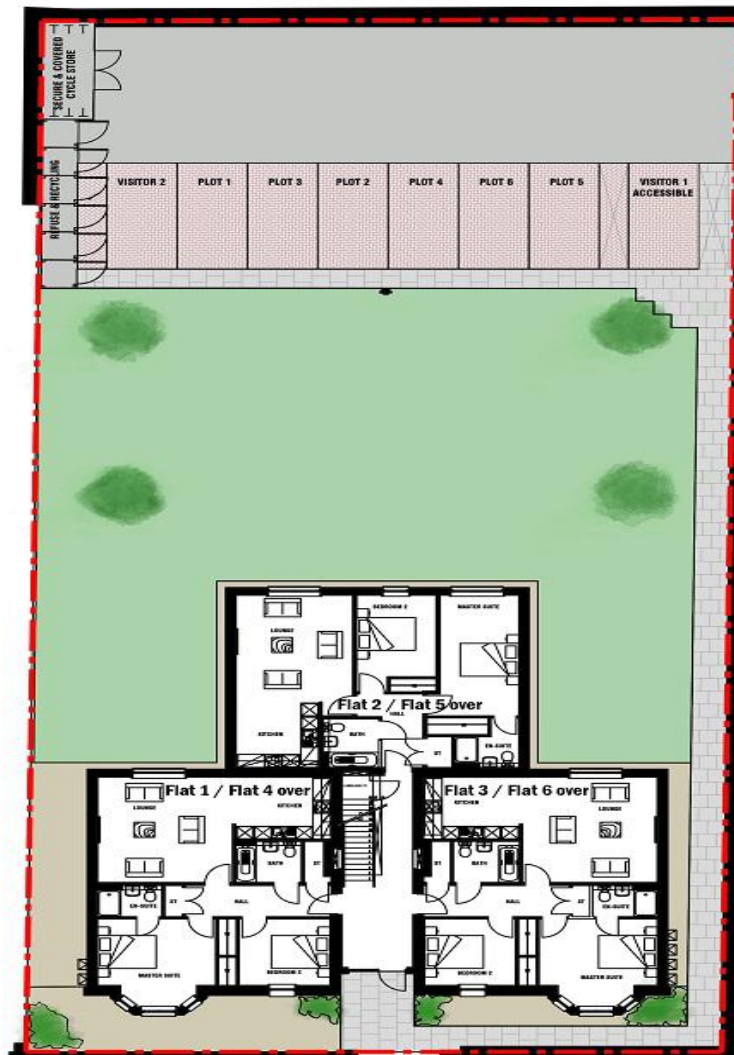
<u>PLOT</u>	<u>FLOOR</u>	<u>SQ. METERS</u>	<u>BEDS</u>	<u>PRICE</u>
1	GROUND	78.53	2	Fixed Price £260,000
2	GROUND	76.88	2	Fixed Price £240,000
3	GROUND	78.53	2	Fixed Price £255,000
4	FIRST	83.1	2	POA
6	FIRST	83.1	2	POA

For further information please contact the sole selling agents Thorntons Property Services, Whitehall House,
33 Yeaman Shore, Dundee DD1 4AR Tel: 01382 200099 or newhomes@thorntons-law.co.uk

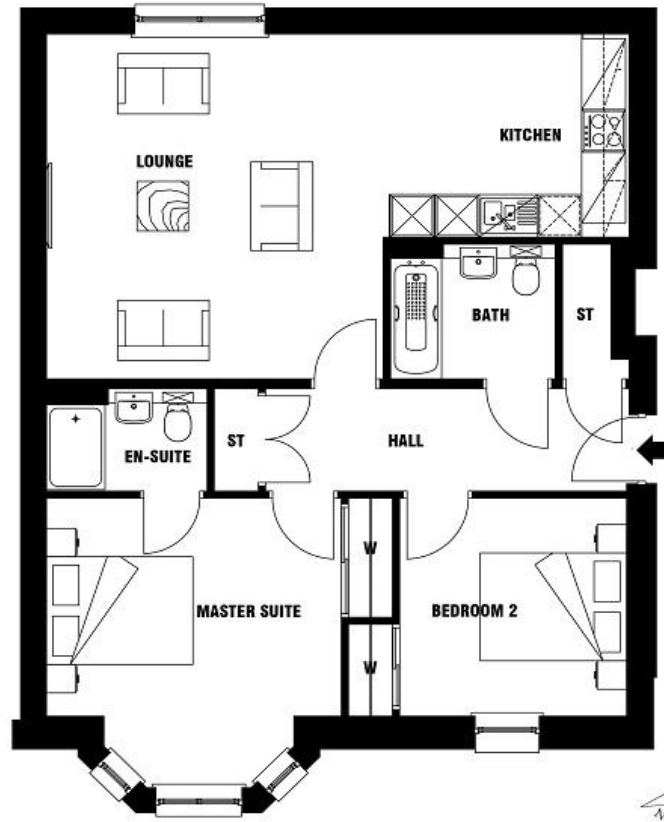


**SPECIFICATION
PANMURE STREET
BROUGHTY FERRY**

- 10 Year NHBC Guarantee
- Top Quality Glazed External Doors
- Secure Entry Door System
- High Quality Internal Doors with Chrome Ironmongery
- Double Glazed Windows
- Gas Central Heating
- White Sanitary Ware & Chrome Mixer Taps to Bathrooms
- Integrated Hob, Oven & Cooker-hood
- Heated Towel Rails to Bathrooms & En-Suites
- Tiling to Shower Rooms & Bathroom
- Luxury Fitted Kitchens
- Integrated Fridge/Freezer & Washing Machine
- Virgin Television Points to Lounge & Master Bedroom
- Terrestrial Television Points to Lounge & all Bedrooms
- Master Telephone Point
- USB Sockets to Master Bedroom & Kitchen
- High Quality Built-in Wardrobes in Bedrooms
- Solar Panels to Serve Communal Spaces
- Dedicated Parking Space
- Visitor & Disabled Parking Facilities



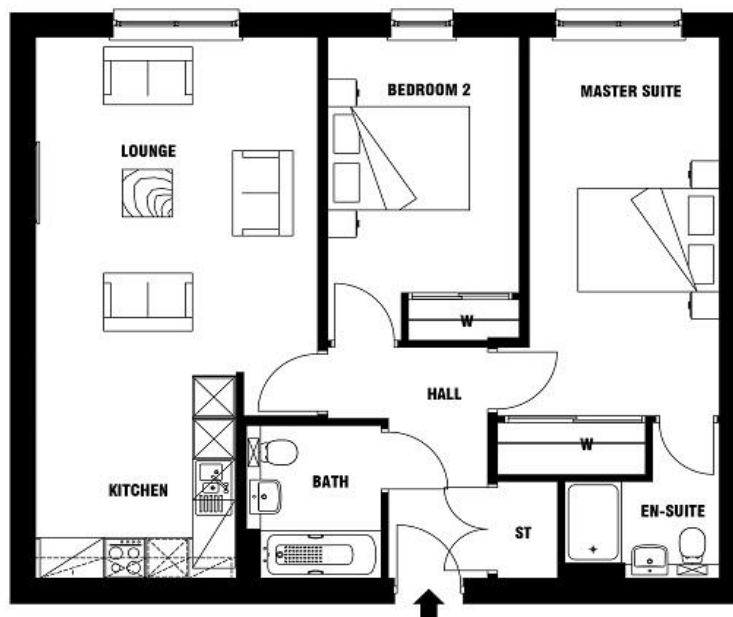
Flat 1
78.53sqm
Ground Floor



Kitchen - 3.36m x 2.86m
Lounge - 4.6m x 4.86m
Master Suite - 4.02m x 4.08m
Bedroom 2 - 3.09m x 3.07m

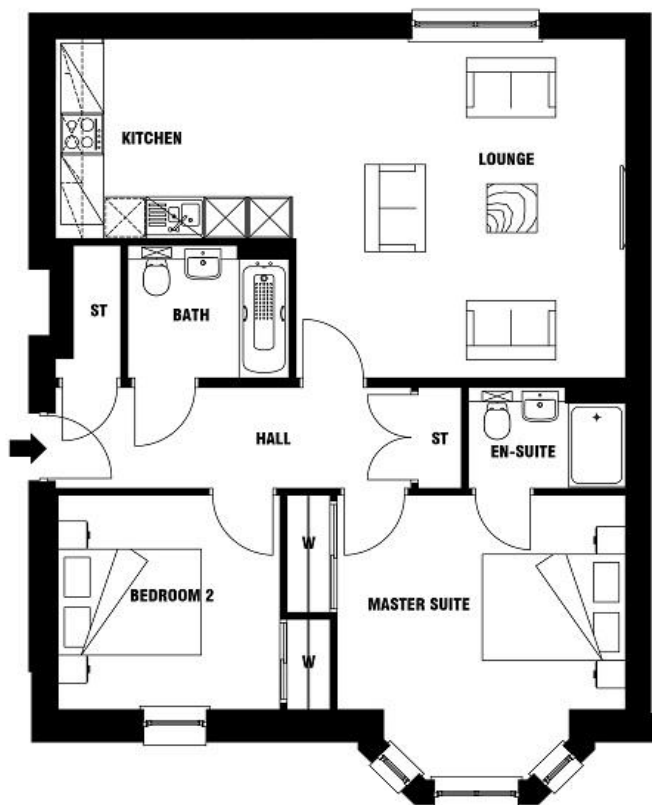
**All dimensions are taken to the widest points*

Flat 2
76.88sqm
Ground Floor



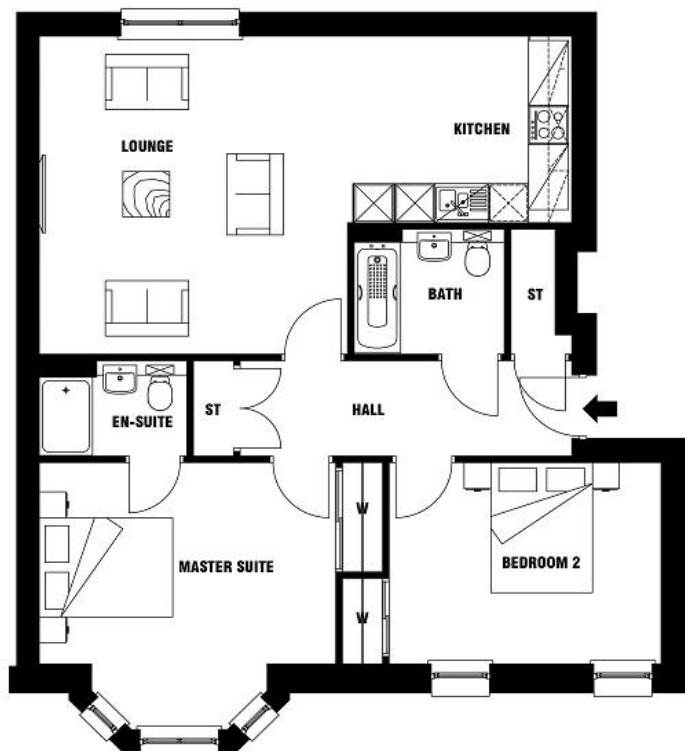
Kitchen - 2.83m x 3.03m
Lounge - 3.97m x 5.57m
Master Suite - 3.12m x 5.57m
Bedroom 2 - 2.7m x 4.46m

**All dimensions are taken to the widest points*



Kitchen - 3.36m x 2.86m
Lounge - 4.6m x 4.86m
Master Suite - 4.02m x 4.08m
Bedroom 2 - 3.09m x 3.07m

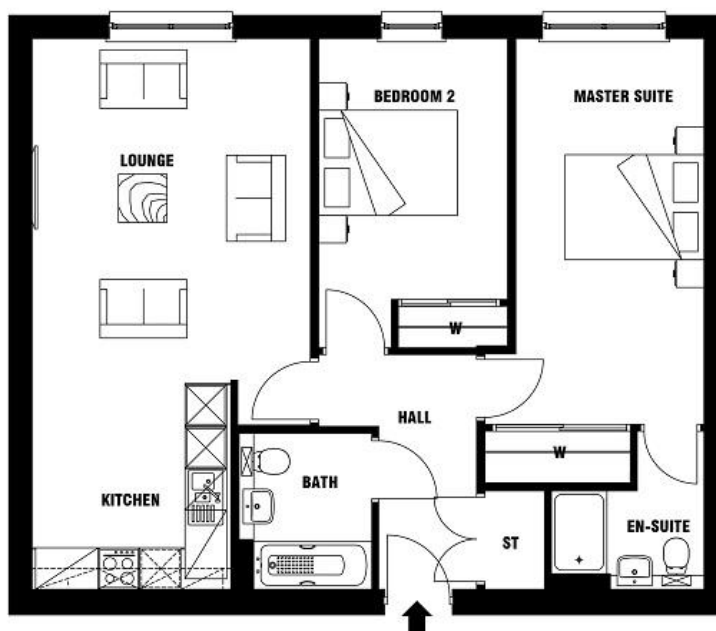
**All dimensions are taken to the widest points*



Kitchen - 3.36m x 2.86m
Lounge - 4.6m x 4.88m
Master Suite - 4.44m x 4.1m
Bedroom 2 - 4.07m x 3.09m

**All dimensions are taken to the widest points*

Flat 5
77.33sqm
First Floor



Kitchen - 2.86m x 3.03m
Lounge - 4m x 5.6m
Master Suite - 3.15m x 5.59m
Bedroom 2 - 2.72m x 4.48m

**All dimensions are taken to the widest points*

Flat 6
83.1sqm
First Floor



Kitchen - 3.36m x 2.86m
Lounge - 4.6m x 4.88m
Master Suite - 4.44m x 4.1m
Bedroom 2 - 4.07m x 3.09m

**All dimensions are taken to the widest points*

