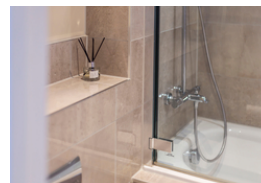
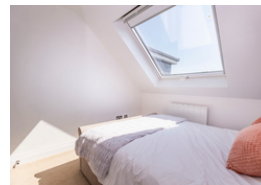
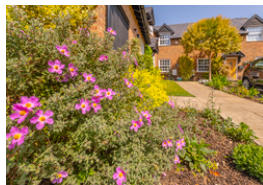
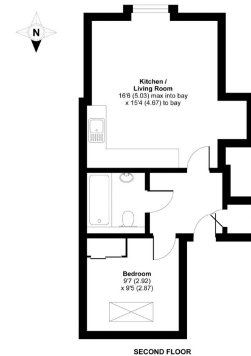


Client Draft Details Sign-off

3 Hamilton Court, Glebeland Gardens, Shepperton, Middlesex. TW17 9AT.

£235,000



- Modern One Bedroom Apartment
- Open Plan Kitchen Living Room
- Central Location in Shepperton Village
- Built in 2018
- Double Bedroom with Built in Wardrobes
- Security Entrance System
- Leasehold
- Council Tax Band B

Bazely and Co are delighted to bring to the market this stunning one bedroom, second floor apartment located in the heart of Shepperton village. The property offers a double bedroom with built in wardrobes and velux window, modern bathroom with Villeroy and Boch suite and a lovely open plan kitchen/living area with space for a home office set up. The kitchen has a range of high quality units and integrated appliances. The property is accessed via a secure entry system and benefits from double glazing and electric heating. Conveniently located for village shops and restaurants. The apartment is a 0.4 mile walk to Shepperton railway station, with direct links to London Waterloo and a short walk to the River Thames. Offered to the market with No Onward Chain. Leasehold. Council Tax Band B. EPC Rating B.

Hallway

Secure entry system, storage cupboard.

Kitchen/Living Room

5.03m x 4.67m (16' 6" x 15' 4") Range of modern units and integrated appliances.

Bedroom

2.92m x 2.87m (9' 7" x 9' 5") Built in wardrobe, velux window.

Bathroom

Modern suite, shower over bath, hand basin with vanity unit, heated towel rail, extractor fan.