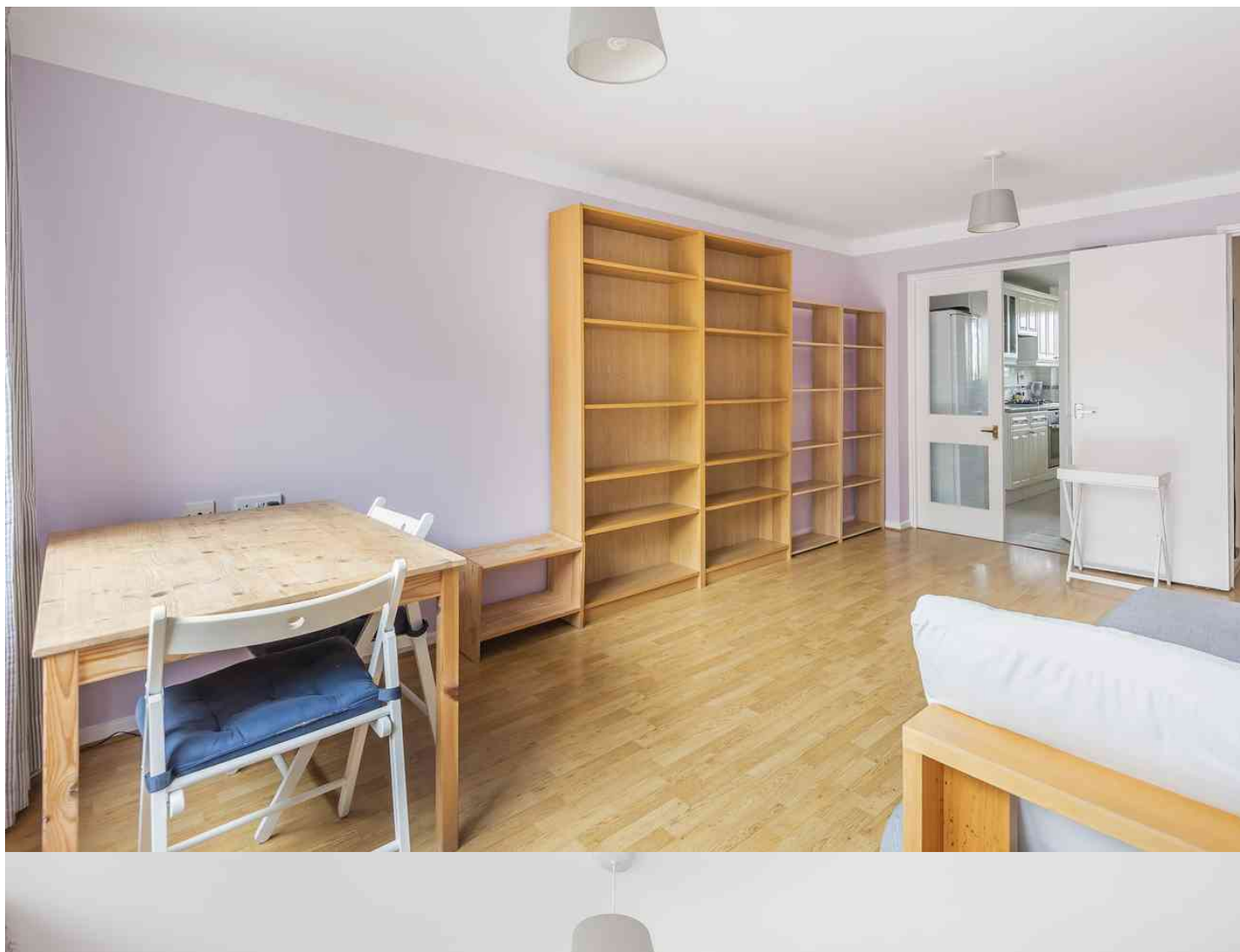




Justin Close, Brentford, TW8 8QR

**Cow & Co**  
LONDON



GUIDE PRICE OF £300,000-400,000. An excellent one double bedroom apartment offering bright and spacious accommodation along with modern fixtures and fittings. Brentford Dock is an impressive and highly sought-after riverside development on the banks of the Thames, opposite Kew Gardens, and just behind Brentford High Street. The development is set on 22 acres and enjoys exceptional communal green spaces including the Thames Path.

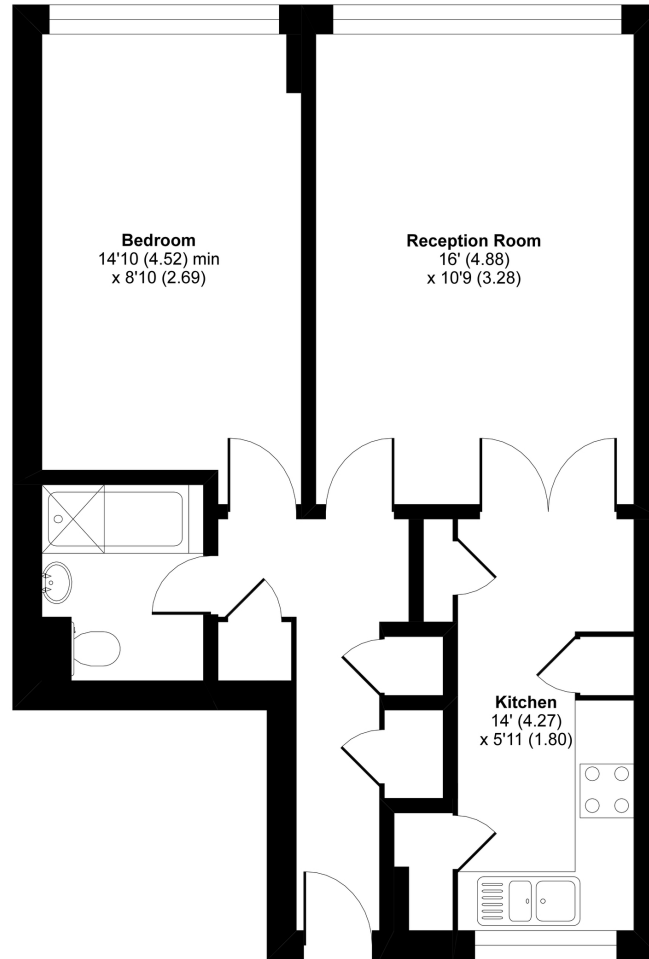


- One double bedroom apartment set within a prestigious development in Brentford
- Bright and spacious living area with space for dining
- Modern fitted kitchen & bathroom
- Well proportioned double bedroom
- Close to local amenities and transport links
- Ample storage space throughout

# Justin Close, Brentford, TW8

Approximate Area = 541 sq ft / 50.3 sq m

For identification only - Not to scale



GROUND FLOOR



Floor plan produced in accordance with RICS Property Measurement Standards incorporating International Property Measurement Standards (IPMS2 Residential). © nichecom 2020. Produced for Cow & Co Properties Ltd. REF: 641404

Tel: 0208 065 0010  
Email: [thehub@cowandco-london.com](mailto:thehub@cowandco-london.com)  
Web: [cowandco-london.com](http://cowandco-london.com)

Agents note: All measurements are approximate and whilst every attempt has been made to ensure accuracy they are for general guidance only and must not be relied on. The fixture and fittings referred to have not been tested and therefore no guarantee can be given that they are in working order. Internal photographs are reproduced for general information and it must not be inferred that any item shown is included with the property.

**Cow & Co**  
LONDON