

# elevation

estate agents | est. 1992

9 Whittle Court,  
Knowlhill, Milton Keynes, MK5 8FT

Tel: 01908 231 800  
mail@elevationnewhomes.com



**Flat 3 1 Suffolk Punch Close, Heelands,  
Milton Keynes, Buckinghamshire, MK13  
7PH**

**£80,325 Leasehold**

- OPEN DAY 18TH & 19TH JANUARY - PLEASE CALL TO REGISTER YOUR INTEREST
- Brand New Shared Ownership Apartment
- 2 Bedrooms and 2 Bathrooms
- No Premiums
- 2 Parking Spaces
- Close to Central Milton Keynes
- En-suite to master
- Rare Opportunity
- Shares available from as little as 35%



See our full selection of properties online at [www.elevationstateagents.com](http://www.elevationstateagents.com)



\*\*\* OPEN DAY 18TH & 19TH JANUARY - PLEASE CALL TO REGISTER YOUR INTEREST \*\*\*

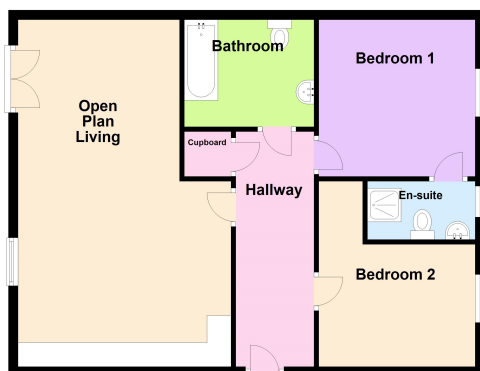
A selection of rarely available brand new TWO BEDROOM TWO BATHROOM shared ownership apartments for sale close to central Milton Keynes with no premiums. These stunning apartments come with a high specification including built-in kitchen appliances, flooring throughout and USB plug points. Please call ASAP to arrange a viewing.

Not to be missed! Rent and service charge from approximately £360.00 PCM, please do not hesitate to contact one of the Elevation New Homes team now in order to secure one of these fantastic apartments.

### Disclaimer

Whilst we have endeavoured to prepare our sales particulars accurately none of the services, appliances or equipment have been tested. A buyer should satisfy themselves on such matters prior to purchase. Any measurements or distances mentioned in these particulars are for guide reference only. If such particulars are fundamental to a purchase, buyers should rely on their own enquiries. All enquiries should be directed to Elevation Estate Agents in the first instance.

Floor Plan



Floor plans are for layout purposes only  
Plan produced using PlanUp.

elevation  
estate agents | est. 1972