



**£3,000 pcm**  
4 bedroom terraced house

George Lane  
Hither Green

# Read all about it...

Now introducing this property to rent on George Lane in Hither Green. This stylish 4 Bedroom residence seamlessly blends modern comforts with classic charm. Featuring 4 Large Double bedrooms and a Lounge & Reception area with plenty of space to receive guests, this property is the perfect chance to live in the highly desirable Hither Green Area, just a short distance away from local amenities and public transport.

Heading into the property, the large hallway opens up into a large reception room, lounge and kitchen, fitted with all the conveniences that come with modern living. Upstairs there are 4 large bedrooms with double glazed windows, bathing them in natural light.

Outside there is a private garden - perfect for those sunny days, and all throughout the property there is an abundance of space and neutral decor, really allowing you to customize the property to your tastes!

Available from 1st April, Call us now to book your viewing!

**GROUND FLOOR**

**Entrance Hall**  
1.78m x 5.44m (5' 10" x 17' 10")  
Laminate Flooring, Dome Ceiling Lighting, Radiator, Tiled Mosaic Floor

**Study**  
4.06m x 3.96m (13' 4" x 13' 0")

**Reception Room**  
5.10m x 4.34m (16' 9" x 14' 3")  
Laminate Flooring, Double Glazed Casement Window to Front, Pendant Lighting

**Kitchen / Diner**  
5.29m x 4.06m (17' 4" x 13' 4")  
Spotlight Lighting, Tiled Flooring, Matching Wall & Base Units, Integrated Electric Hob, Oven & Grill, Extractor Fan, Double Glazed Casement Window, Single Faucet Sink with Mixer Tap and Drainage Area

**Lounge**  
4.34m x 4.16m (14' 3" x 13' 8")  
Laminate Flooring, Double Glazed Rear Door to Garden, Pendant Lighting

**Shower Room**  
2.40m x 1.78m (7' 10" x 5' 10")  
Dome Ceiling Lighting, Extractor Fan, Walk-shower, Hand Wash Basin, W/C, Frosted Double Glazed Awning Window

**FIRST FLOOR**

**Bathroom**  
Flush Ceiling Lighting, Tiled Walls & Floor, Hand Wash Basin with Vanity, W/C, Ceramic Bathtub, Double Glazed Casement Window, Towel Rack

**Bedroom**  
4.16m x 2.87m (13' 8" x 9' 5")  
Laminate Flooring, Double Glazed Casement Window, Pendant Lighting, Radiator

**Bedroom**  
4.34m x 4.22m (14' 3" x 13' 10")  
Laminate Flooring, Double Glazed Casement Window, Pendant Lighting, Radiator

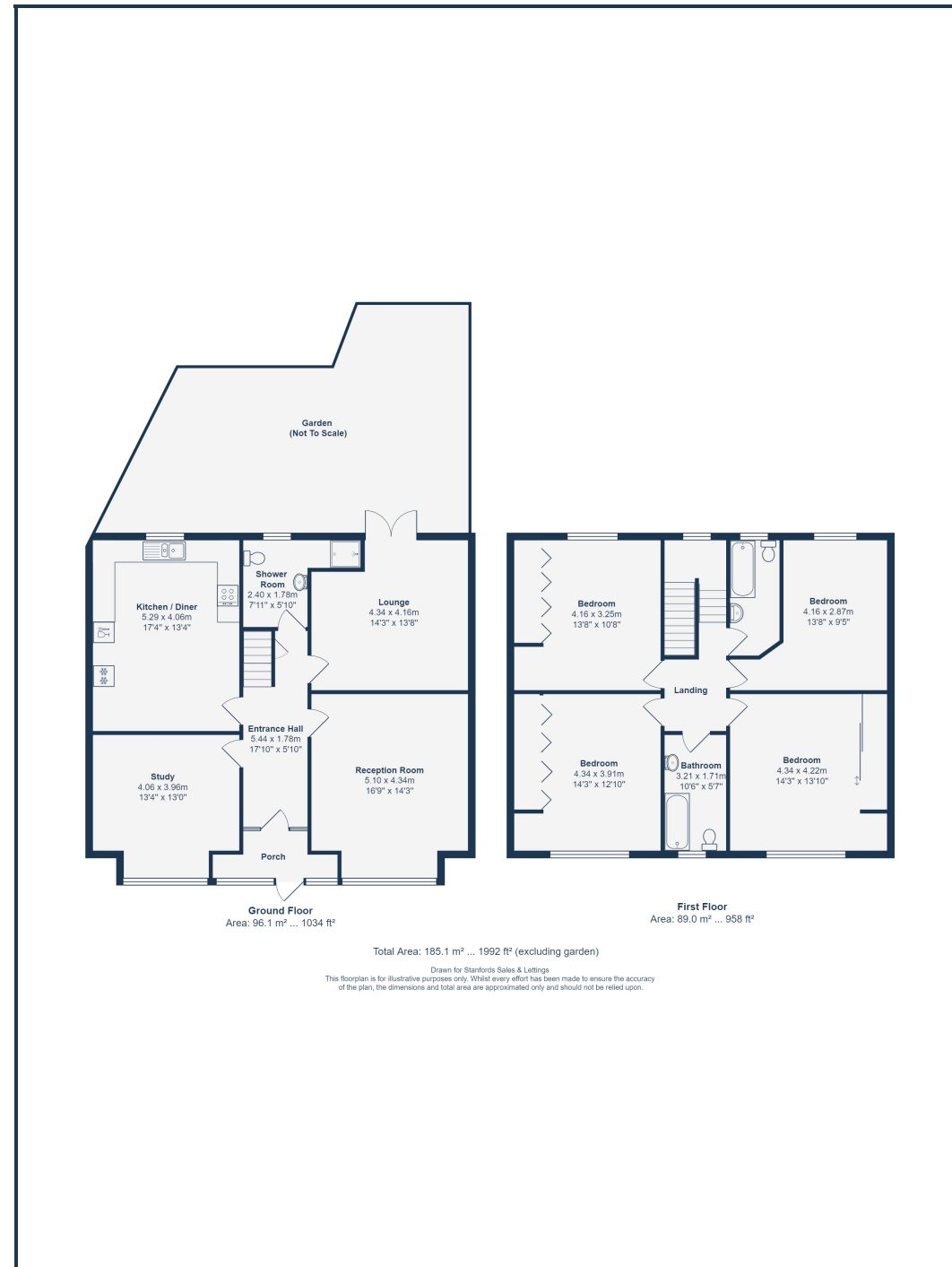
**Bedroom**  
4.34m x 3.91m (14' 3" x 12' 10")  
Laminate Flooring, Double Glazed Casement Window, Pendant Lighting, Radiator

**Bedroom**  
4.16m x 3.25m (13' 8" x 10' 8")  
Laminate Flooring, Double Glazed Casement Window, Pendant Lighting, Radiator

**Bathroom**  
Double Glazed Window with Blind, Flush Ceiling Lighting, Towel Rack, Ceramic Bathtub with Shower, W/C, Hand Basin with Cupboard, Tiled Wall and Flooring

**OUTSIDE**

**Garden**  
Paved Area, Planting Pots, Wooden Privacy Fence

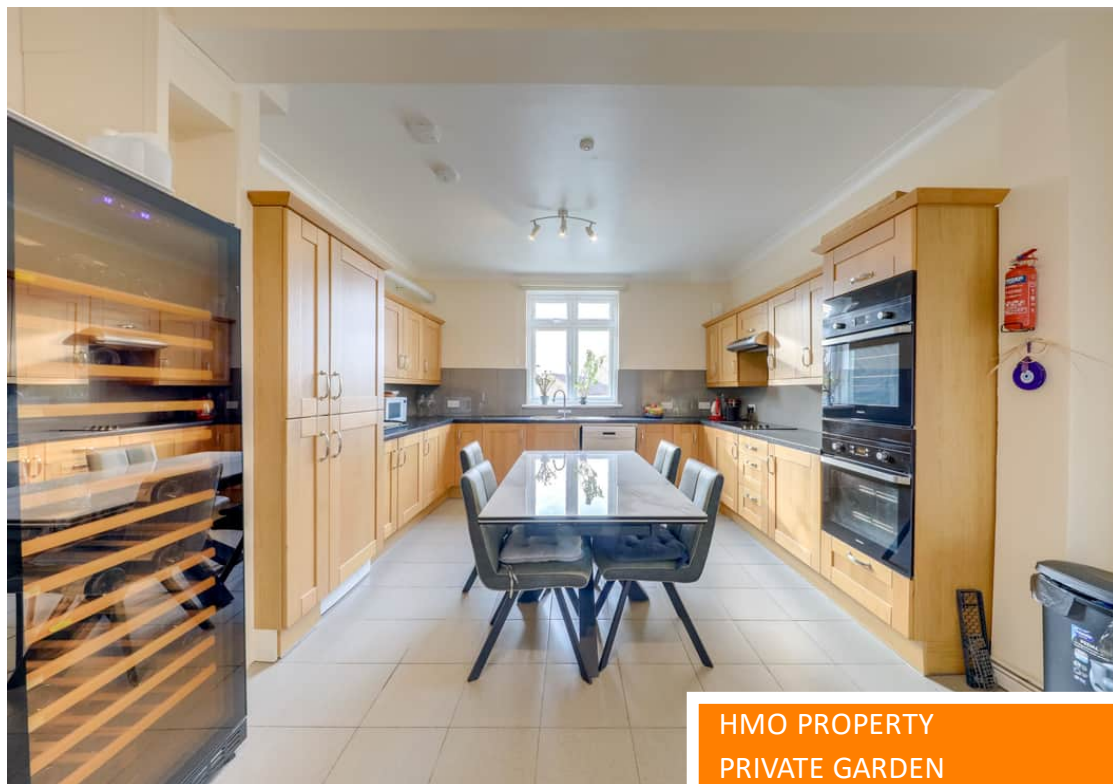


Like what you see?

Call 020 8852 0026 or email us at [hithergreen@stanfordestates.london](mailto:hithergreen@stanfordestates.london) to arrange a viewing or request further information

[www.stanfordestates.london](http://www.stanfordestates.london)



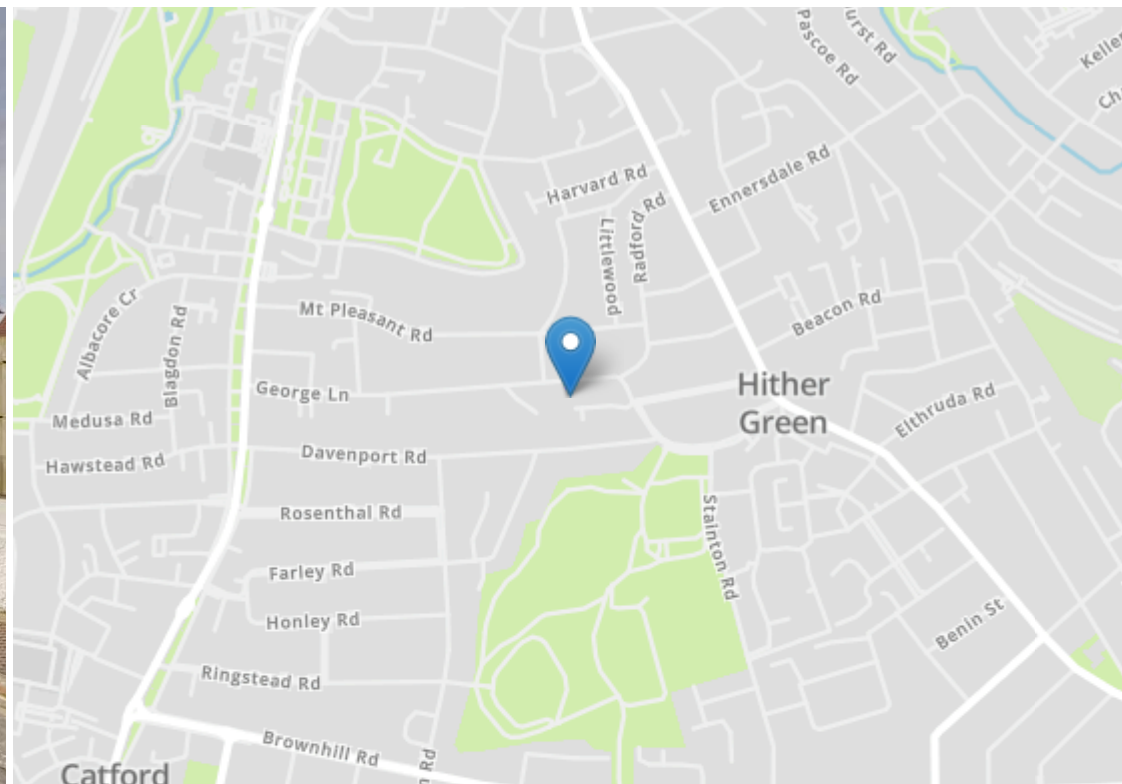


HMO PROPERTY  
PRIVATE GARDEN  
4 BEDROOM, 3 BATHROOM

AVAILABLE 1ST APRIL  
LOUNGE & RECEPTION  
ROOM  
UNFURNISHED







Robert Stanford Estates property particulars are produced in accordance with the Consumer Rights Act (2015) and should not be construed as a contract or offer. The contents of these property particulars are to provide a general illustration only and are inconsequential to any decisions to purchase a property. A potential buyer accepts that all representations made by these particulars are made in good faith on behalf of the seller and require verification by a buyers' legal and professional representatives prior to an exchange of contracts. We offer no guarantees for any structural component, service or appliance and while we make every effort to take accurate measurements and distances, they are illustrative only. Any reliance you place on information within these particulars is therefore strictly at your own risk.