

Pinewood House Flat 2, 10 Defiant Close

HAWKINGE, Folkestone
CT18 7SU

£210,000 LEASEHOLD

DRAFT DETAILS... FOR SALE WITH BURNAP + ABEL....(Price Guide £210,000-£220.000).... Burnap + Abel are delighted to offer this superb two bedroom purpose built apartment that is situated in the popular location of Hawkinge. The property is in excellent condition throughout and offers an open plan lounge/kitchen, family bathroom and two double bedrooms. Additional benefits include en-suite to master bedroom, an allocated parking space, double glazing and excellent views to the rear. For your chance to view call sole agent Burnap + Abel now on 01303 258590.



Lounge/Kitchen

21' 0" x 14' 10" (6.40m x 4.52m)

Bedroom

9' 7" x 9' 4" (2.92m x 2.84m)

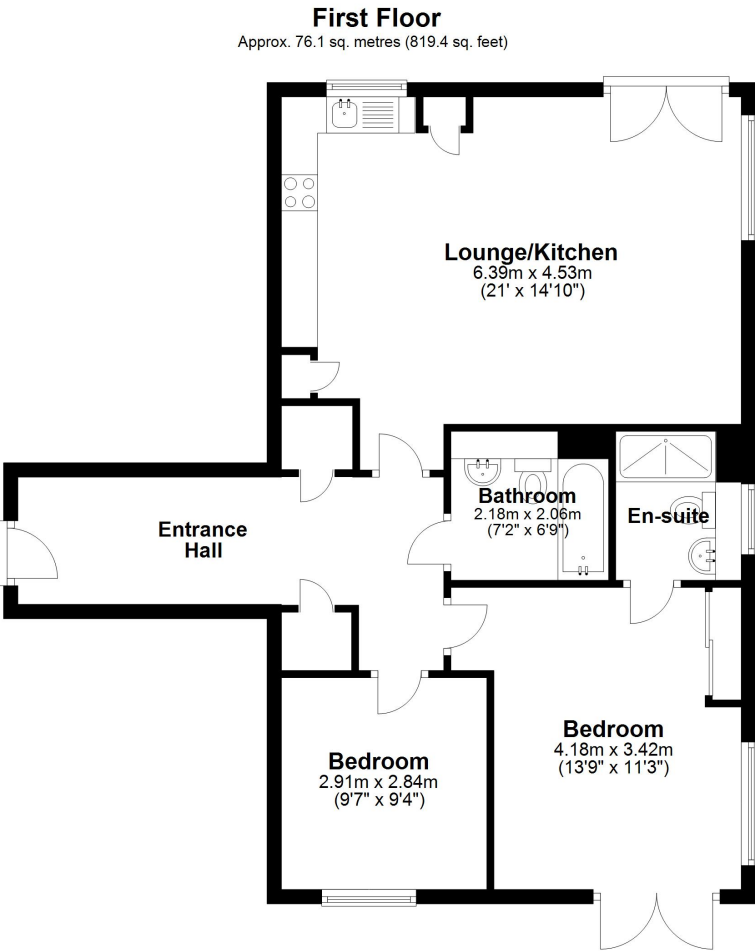
Bathroom

7' 2" x 6' 9" (2.18m x 2.06m)

Bedroom

13' 9" x 11' 3" (4.19m x 3.43m)

En-suite



Total area: approx. 76.1 sq. metres (819.4 sq. feet)

Whilst every attempt has been made to ensure the accuracy of the floor plan contained here, measurements of doors, windows, rooms and any other items are approximate and no responsibility is taken for any error, omission or mis-statement. This plan is for illustrative purposes only and should be used as such by any prospective purchaser.
Plan produced using PlanUp.

