



Hopton Street



# Hopton Street

Worcester

Offers in Region of £180,000

Situated within the popular residential location of St John's offering good access to the city centre as well as close proximity to the city centre is this three bedrooms semi-detached home. The property comprises of entrance hall, sitting room, kitchen, utility, WC, three bedrooms and family bathroom. The property further benefits from a driveway and is offered for sale with no onward chain.

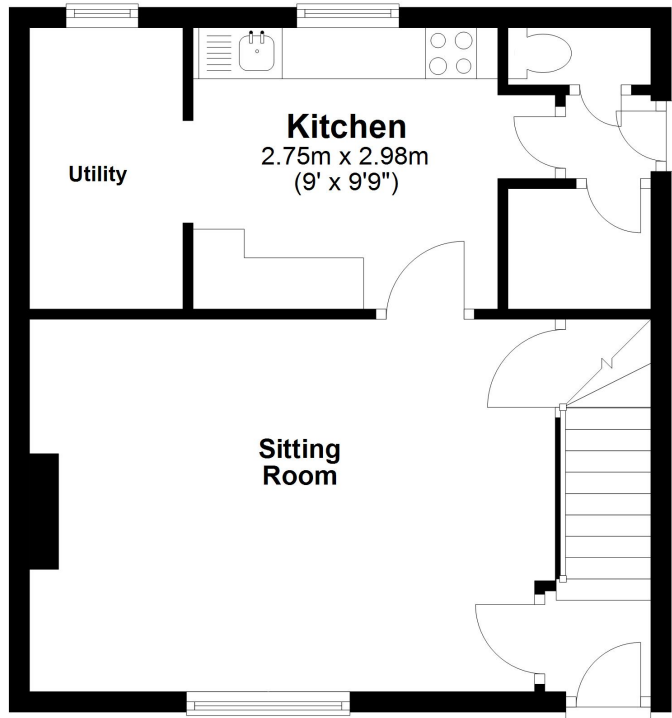
## We've Noticed

- **Semi-detached home**
- **Three bedrooms**
- **Downstairs WC & utility**
- **Driveway and garden**
- **No onward chain**

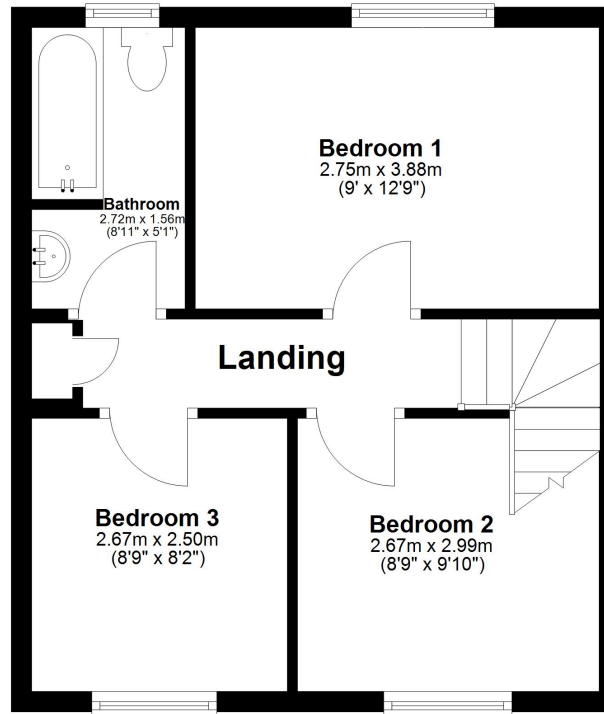




## Ground Floor



## First Floor



Energy Efficiency Rating		Current	Potential
<i>Very energy efficient - lower running costs</i>			
(92+)	<b>A</b>		
(81-91)	<b>B</b>		83
(69-80)	<b>C</b>		
(55-68)	<b>D</b>	67	
(39-54)	<b>E</b>		
(21-38)	<b>F</b>		
(1-20)	<b>G</b>		
<i>Not energy efficient - higher running costs</i>			
England, Scotland & Wales		EU Directive 2002/91/EC	

46 Foregate Street, Worcester WR1 1EE

Tel: 01905 723545 info@hillsestateagents.co.uk

[www.hillsestateagents.co.uk](http://www.hillsestateagents.co.uk)

These particulars, whilst believed to be accurate are set out as a general outline only for guidance and do not constitute any part of an offer or contract. Intending purchasers should not rely on them as statements or representation of fact, but must satisfy themselves by inspection or otherwise as to their accuracy. We have not carried out a detailed survey nor tested the services, appliances and specific fittings. Room sizes should not be relied upon for carpets and furnishings. The measurements given are approximate. No person in this firm's employment has the authority to make or give any representation or warranty in respect of the property.

