



Asking Price £450,000



6 Rowan Road, Bexleyheath, Kent DA7
4BW



PROPERTY DESCRIPTION

OPEN HOUSE • Saturday 22 March • 1:00pm - 2:00pm • RE/MAX SELECT are delighted to offer for sale this immaculate Victorian house, situated on a popular residential road close to schools, amenities, and transportation links, including Bexleyheath station. This extended property comprises 3 bedrooms, large living room, dining room, fitted kitchen, and upstairs family bathroom.

Further benefits include double glazing, gas central heating, and 50ft (approx) south-facing garden. Total Internal Area approx: 921.28 sq ft (85.59 sq m).

FEATURES

- Immaculate Victorian Period House
- 3 Bedrooms
- Extended Kitchen
- Upstairs Family Bathroom
- South Facing Garden
- Close to Bexleyheath Station
- Close to Bexleyheath Broadway





ROOM DESCRIPTIONS

Ground Floor

Entrance Hall

Vinyl flooring, radiator, ceiling coving.

Living Room

Carpeted, radiator, fireplace, ceiling coving, double glazed bay window.

Dining Room

Laminate flooring, radiator, fireplace, ceiling coving, storage cupboard, double glazed window.

Kitchen

Vinyl flooring, double glazed windows; range of wood wall and base units with granite-effect worktops; stainless steel 1½ sink and drainer unit with mixer tap; 5-burner gas hob with extractor hood; electric oven, integrated dishwasher, washing machine.

First Floor

Landing

Carpeted, ceiling coving; access to loft.

Master Bedroom

Carpeted, radiator, ceiling coving, double glazed windows.

Bedroom

Carpeted, radiator, ceiling coving, double glazed windows.

Bedroom

Carpeted, radiator, double glazed windows.

Family Bathroom

Laminate flooring, double glazed windows; bath with shower-mixer; shower enclosure with thermostatic shower fitting; wash-hand basin with mixer tap; w/c, heated towel-rail.

Exterior

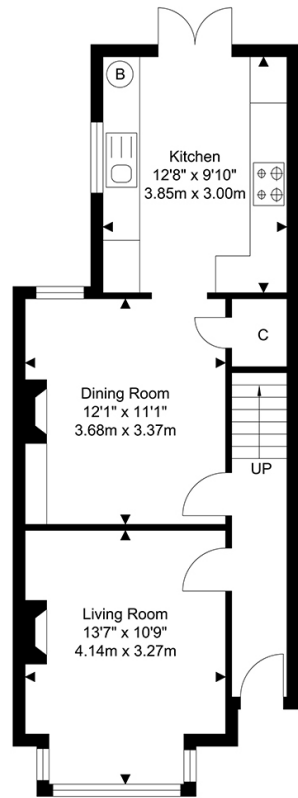
Front Garden

Patio area.

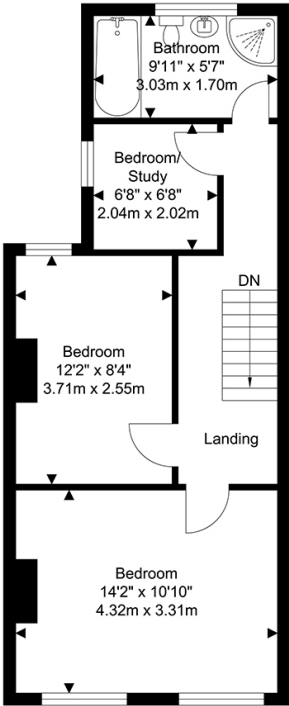
Rear Garden

Approximately 50ft, south-facing; large patio, artificial lawn, Rattan furniture; storage shed.

FLOORPLAN



Ground Floor
Approximate Floor Area
466.83 SQ.FT.
(43.37 SQ.M.)



First Floor
Approximate Floor Area
454.45 SQ.FT.
(42.22 SQ.M.)

TOTAL APPROX FLOOR AREA 921.28 SQ. FT / 85.59 SQ. M
For Identification Purposes Only.

