



Offers in Excess of £435,000
Westerham Drive, Sidcup, Kent, DA15 9NS

Christopher Russell
PROPERTY SERVICES



AGENTS NOTES: No statement in these particulars is to be relied upon as representations of fact and purchasers should satisfy themselves by inspection, or otherwise, as to the accuracy of the statements contained herein. These details do not constitute any part of any offer or contract. Christopher Russell have not tested any equipment or heating system mentioned and purchasers are advised to satisfy themselves as to their working order. Great care is taken when measuring but measurements should not be relied upon for ordering carpets, equipment etc.

Christopher Russell LLP. Registered in Cardiff. Partnership No. OC329088

Christopher Russell Property Services

33 The Oval, Sidcup, Kent DA15 9ER • Tel: 020 8300 1234 Fax: 020 8300 6530 • sales@christopher-russell.co.uk

Offers in excess of £435,000.

Three bedroom house situated in a popular cul de sac offered as end of chain.

This ideal family home is presented in good decorative condition and comprises; entrance hall with storage cupboard, lounge, kitchen open planned to the dining room with a door to the rear garden on the ground floor. On the first floor are three bedrooms, two double and one single bedroom and a family bathroom.

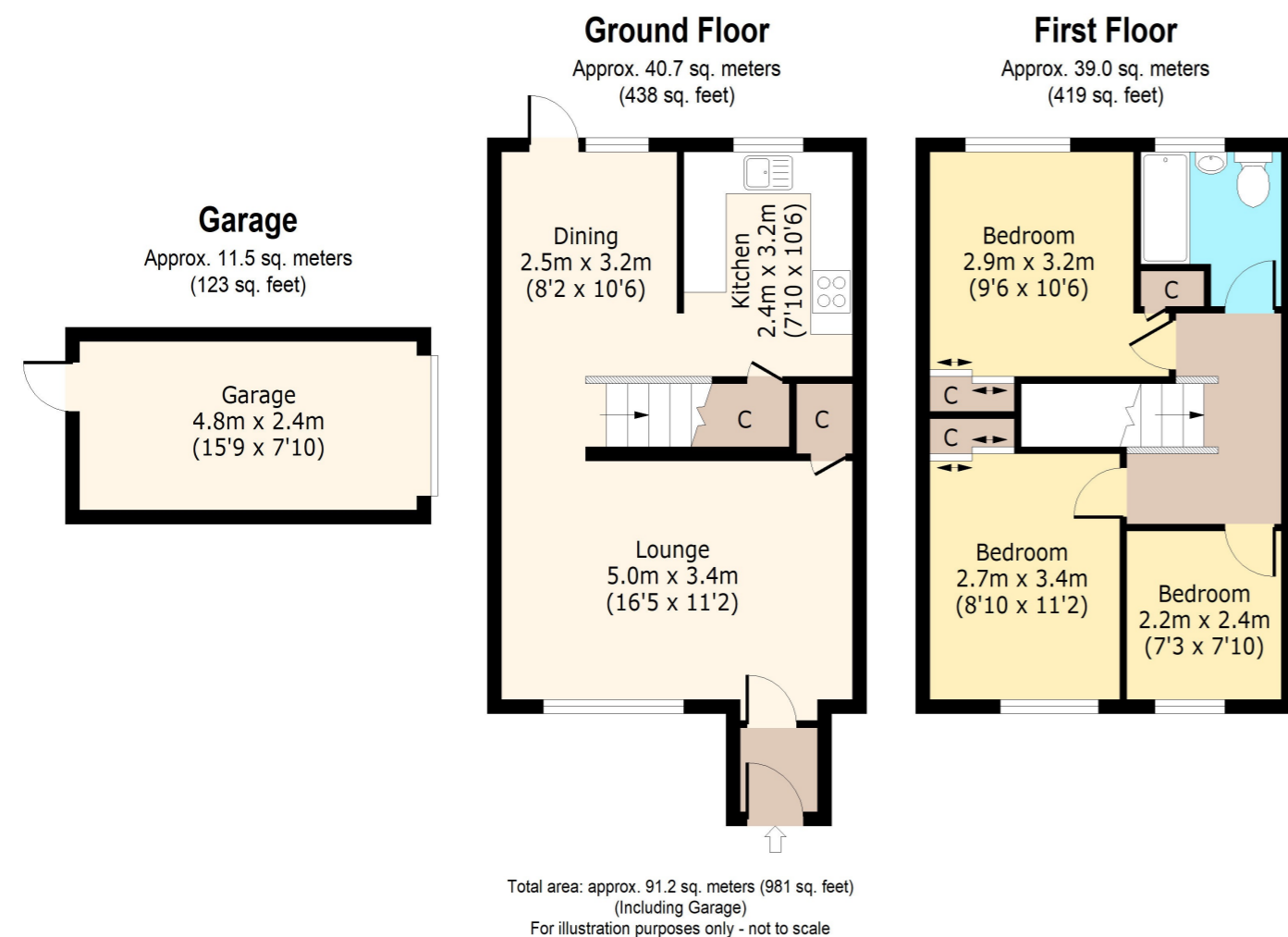
This popular cul de sac is well situated for local shopping and transport facilities, Bexley Grammars and Blackfen School for Girls.

The property features a fitted kitchen, modern bathroom suite, new gas central heating and double glazing.

Outside there is a front driveway that provides off street parking and a garage at the rear.

The rear garden is easy to maintain and is mainly laid to lawn. There is rear vehicular access to the garage.

Council Tax Band D.



Energy Efficiency Rating		Current	Potential
Very energy efficient - lower running costs			
(92+)	A		
(81-91)	B		87
(69-80)	C	71	
(55-68)	D		
(39-54)	E		
(21-38)	F		
(1-20)	G		
Not energy efficient - higher running costs			
EU Directive 2002/91/EC			
England, Scotland & Wales			