



Farnsworth Court, West Parkside, Greenwich, SE10 0RU

£1,400 PCM

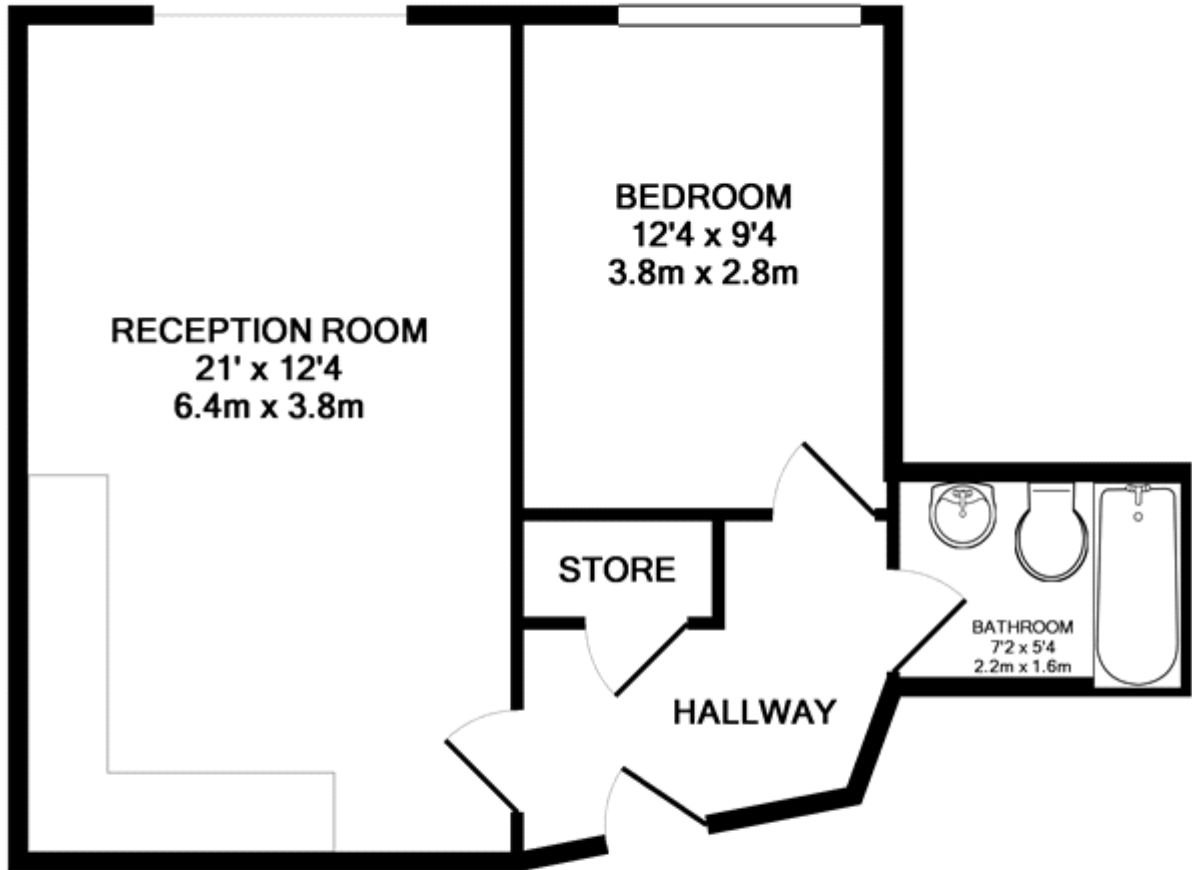
ZERO AGENCY FEES ***Pay less upfront with a Zero Deposit Guarantee*** A fantastic one bedroom apartment situated in North Greenwich. Located moments from North Greenwich tube station (Jubilee Line) and the O2 Arena with its host of bars and restaurants. The property briefly comprises open plan kitchen/reception, double bedroom, bathroom and 24 hour concierge service. This property is available from the 17th July 2019.

Viewing by appointment with 1st avenue.

Call: 020 8293 8600

1st avenue, 128 Metcalfe Court, West Parkside, London SE10 0EL
email: info@1stavenue.co.uk

Farnsworth Court, West Parkside, **£1,400 PCM** Greenwich, SE10 0RU



TOTAL APPROX. FLOOR AREA 483 SQ.FT. (44.9 SQ.M.)

Whilst every attempt has been made to ensure the accuracy of the floor plan contained here, measurements of doors, windows, rooms and any other items are approximate and no responsibility is taken for any error, omission, or mis-statement. This plan is for illustrative purposes only and should be used as such by any prospective purchaser. The services, systems and appliances shown have not been tested and no guarantee as to their operability or efficiency can be given

Made with Metropix ©2016

Viewing by appointment with 1st avenue.

Call: 020 8293 8600

1st avenue, 128 Metcalfe Court, West Parkside, London SE10 0EL
email: info@1stavenue.co.uk