



**Chestnut Drive
Brixham
Devon
TQ5 0DE**

Offers in Excess of £239,000

bettermove

Chestnut Drive

Brixham

Bettermove are proud to present this 2 bedroom semi-detached in Brixham available with no forward chain.

The property benefits from double glazing, gas central heating throughout and has off street parking available via the driveway and garage. The council tax band is B.

The interior of this property comprises a spacious living room, fitted kitchen, two bedrooms and the family bathroom. The exterior boasts a private rear garden and front garden, perfect for enjoying the summer months.

Located in the popular town of Brixham, the property is close to a range of amenities with the town centre and waterfront being less than two miles away, with the shops at St Mary's Square being about half a mile away and many local buses routes.

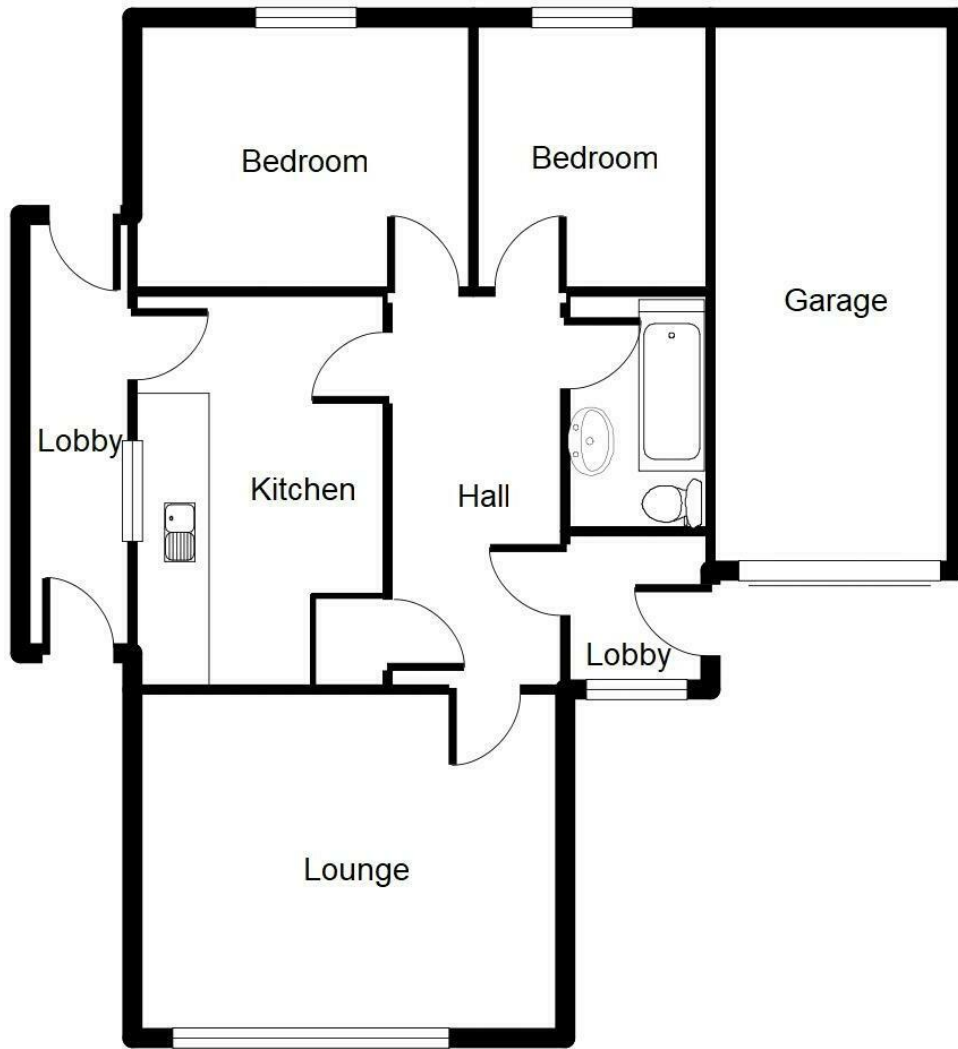
This exciting opportunity should not be missed! All enquiries can be made through Bettermove on 0330 004 0050.

You can secure the purchase today by paying an exclusivity fee of £1,000 which gives you the rights to purchase within a given timeframe.

Paying this fee ensures that the seller takes their property off the market and reserves it exclusively for you, therefore eliminating the risk of gazumping and aborted costs.

The exclusivity fee is returned to you upon successful completion of the property.





Energy Efficiency Rating		
	Current	Potential
<i>Very energy efficient - lower running costs</i>		
(92+) A		
(81-91) B		87
(69-80) C		
(55-68) D		
(39-54) E	44	
(21-38) F		
(1-20) G		
<i>Not energy efficient - higher running costs</i>		
England, Scotland & Wales	EU Directive 2002/91/EC	



20-22 Bridge End, Leeds, LS1 4DJ
t: 0330 004 0050 e: hello@bettermove.co.uk
www.bettermove.co.uk