

FOR SALE

£300,000 Leasehold



Davis & Gibbs

Streatham Close, Streatham Hill. SW16

Oval Branch
36, Brixton Road, London, SW9 6BU

02078207950
info@davisandgibbs.com

ABOUT THE PROPERTY

This well presented ground floor one bedroom Mansion flat is located within this impressive building in Streatham Hill, with the key benefit of direct access to the gardens.

The property comprises a large inner hallway. A reception room with laminate flooring, which has direct access through large double doors to the communal gardens. The kitchen has wooden counter tops and large window overlooking the green space. The bathroom has a large towel radiator and is tiled floor to ceiling, around the bath. The bedroom is light with a large window and has good storage. The whole property is bright and well-presented throughout and benefits from a recent redecoration and refurbishment throughout.

The apartment is chain free. The location is only a short stroll away from Streatham Hill Train Station and major bus links. The local area is very much community based, with an abundance of independent restaurants, cafes and bars and a large choice of shops. Please book a viewing at your earliest convenience.

FEATURES

- Mansion Flat
- Communal Garden
- On Site Caretaker
- Long Lease
- Chain Free
- Direct Garden Access
- EPC C
- 35.6 SQM



ROOM DESCRIPTIONS

Ground Floor

Kitchen

2.16m x 1.83m (7' 1" x 6' 0")

Kitchen units on two walls with large window overlooking green space. Laminate floors with Shaker style units with wooden counter tops.

Reception

3.73m x 3.33m (12' 3" x 10' 11")

Light and airy lounge, laminate flooring with double doors opening onto communal gardens.

Bedroom

3.71m x 2.59m (12' 2" x 8' 6")

Laminate flooring, large window and a built in wardrobe.

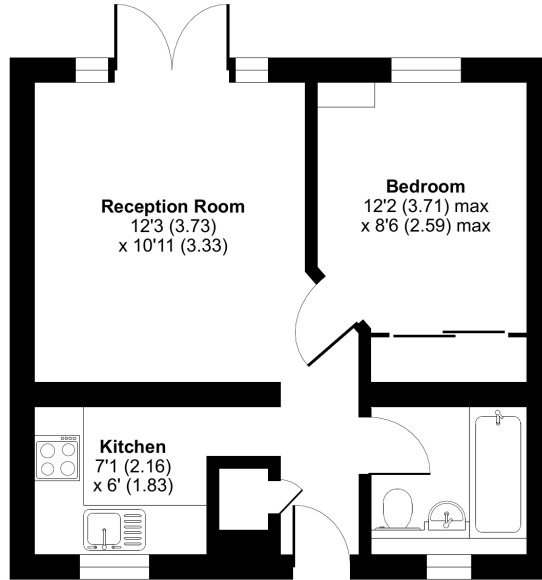


FLOORPLAN

Streatham Close, Leigham Court Road, London, SW16

Approximate Area = 383 sq ft / 35.6 sq m

For identification only - Not to scale



GROUND FLOOR



Floor plan produced in accordance with RICS Property Measurement Standards incorporating International Property Measurement Standards (IPMS2 Residential). © richrecom 2021. Produced for Davis & Gibbs. REF: 067340

EPC

