

FOR SALE

£220,000 Leasehold



Bergenia House, Bedfont Lane, Feltham, Greater London. TW13 4GE

- Entrance Hall
- Spacious Lounge/ Diner
- Stylish Kitchen
- Large Double Bedroom
- Ample Storage Space
- Modern Bathroom
- Lift Access
- Modern Interior
- Central Location
- Highly Recommended



PROPERTY DESCRIPTION

A spacious and beautifully presented apartment with Juliette balcony and long lease. Conveniently located above Feltham High Street and just a stone throw away from the local train and bus station providing easy commuter access into London and Heathrow Airport. The property has recently undergone complete refurbishment offering a fantastic opportunity to move right in. Contact our office now for more information.



ROOM DESCRIPTIONS

Entrance Hall

Approached via a front aspect wooden door, intercom system, laminate flooring, large built in storage cupboard and separate airing cupboard housing hot water tank (2018).

Living Room

Rear aspect double glazed Juliette balcony with USPV shutters, laminate flooring, modern electric radiator, ample space for lounge and dining furniture, entryway to;

Kitchen

A modern range of eye and base level units with integrated oven, electric hob, extractor fan, fridge/ freezer, washing machine and drainage sink. Rear double glazed window, laminate flooring and tiled splash back.

Bedroom

Rear aspect double glazed window with UPSV shutters, built in wardrobe, laminate flooring, modern electric radiator and wiring for TV. Easily fits a dressing table and additional drawers.

Bathroom

Rear aspect double glazed window with frosted glass, P shaped bath with glass screen and rainfall shower attachment, wall mounted LED mirror, low level WC, sink basin, heated towel rail, extractor fan and tiled floor/ walls.

Tenure

LEASE: 105 Years

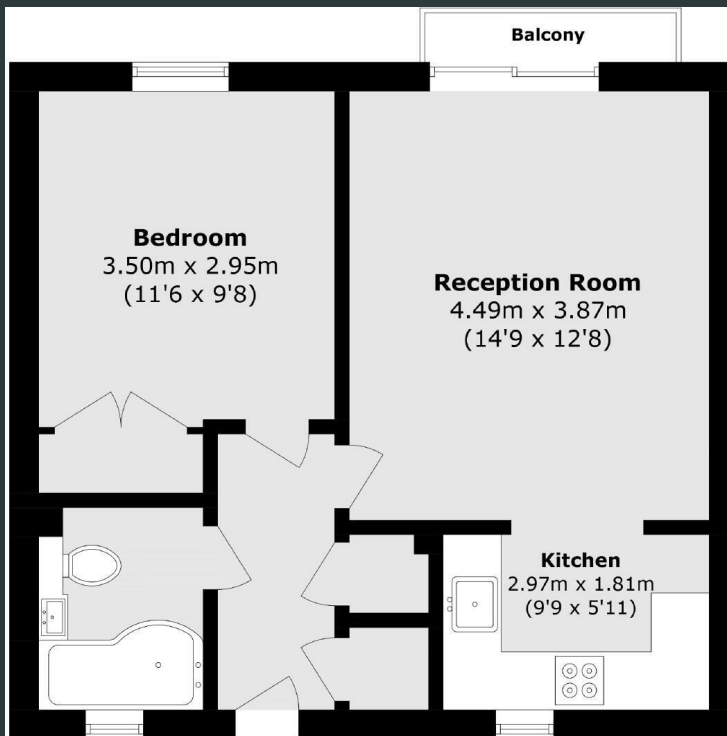
SERVICE CHARGE: £150.70 per month

COUNCIL TAX BAND: C - £1769 p.a.

We recommend all information be confirmed with your solicitor prior to exchange of contracts.



FLOORPLAN



Total area (approx.): 44.2 sq. m (475.7 sq. ft)
Balcony area (approx.): 1.3 sq. m (13.9 sq. ft)