



Turol Road Stanford-le-Hope SS17 8ES

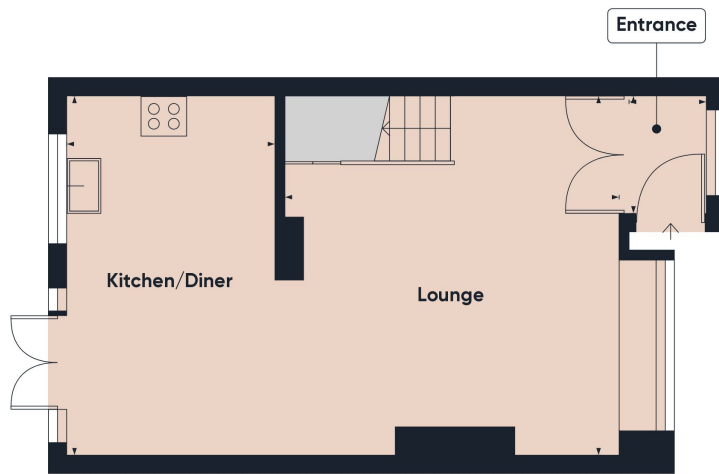
- Three Bedrooms
- End of Terrace
- Garage
- Off Street Parking
- Double Glazed Windows
- Gas Central Heating
- Approx 80ft Rear Garden
- Kitchen-Diner
- Entrance Porch
- Pedestrian Side Access



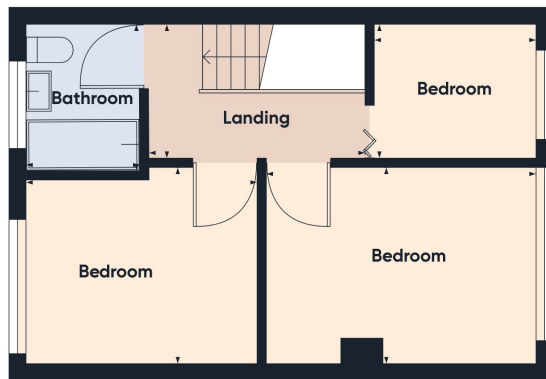
Situated within access of Stanford Le Hope Station is this three Bedroom end of terrace house. The property benefits from double glazed windows, gas central heating system, lounge with separate dining area, approximate 80ft rear garden, off street parking for two cars and garage in block.

£350,000 Freehold

**"To view the full sales particulars,
please visit our website:
www.connollysestates.co.uk"**



Floor 0



Floor 1

Approximate total area⁽¹⁾

773.82 ft²
71.89 m²

(1) Excluding balconies and terraces

While every attempt has been made to ensure accuracy, all measurements are approximate, not to scale. This floor plan is for illustrative purposes only.

GIRAFFE 360