



9 Willowmead, Staines-upon-Thames, Surrey. TW18 2SH.

2 Bedroom Terraced House - £400,000 Freehold

9 Willowmead, Staines-upon-Thames, Surrey. TW18 2SH.

01784 451458

2 Bedroom Terraced House - £400,000 Freehold

**WELL PRESENTED & SPACIOUS TWO BEDROOM PROPERTY
SITUATED ALONG THIS MUCH SOUGHT AFTER CLOSE IDEALLY
LOCATED FOR EASY ACCESS TO STAINES TOWN CENTRE & THE
RIVER THAMES. The property benefits from a spacious lounge/diner with
patio doors to rear garden, modern fitted kitchen, two double bedrooms,
modern white bathroom suite, secluded rear garden and off-street parking.
Viewings Highly Recommended!**

Key Features

**WELL PRESENTED THROUGHOUT
LUXURY KITCHEN & BATHROOM
PRIVATE REAR GARDEN
ALLOCATED PARKING
EASY ACCES TO TOWN CENTRE & MAINLINE TRAIN STATION**

9 Willowmead

Approximate Gross Internal Area = 58.52 sq m / 630 sq ft

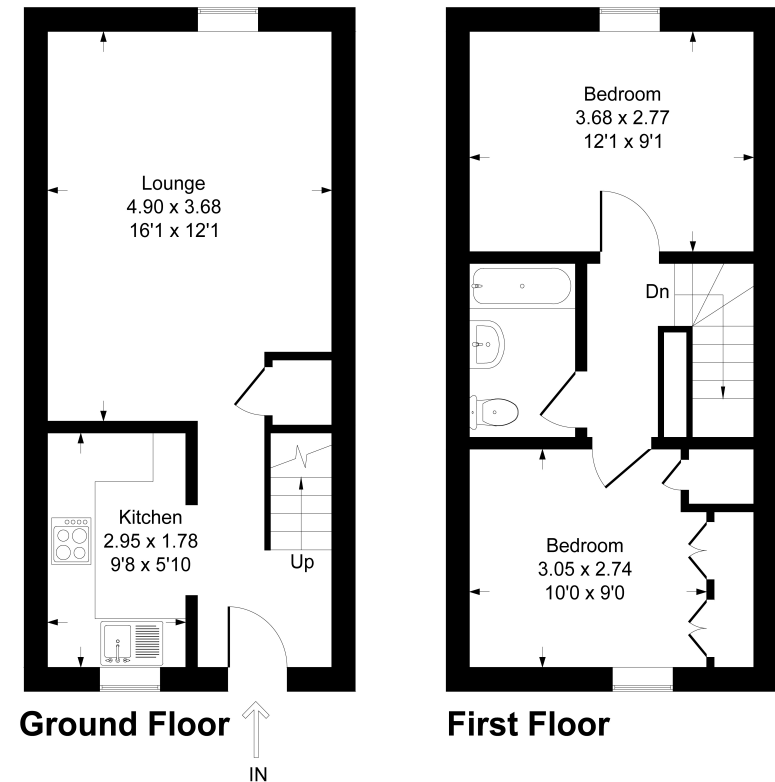


Illustration for identification purpose only, measurements approximate, and not to scale.



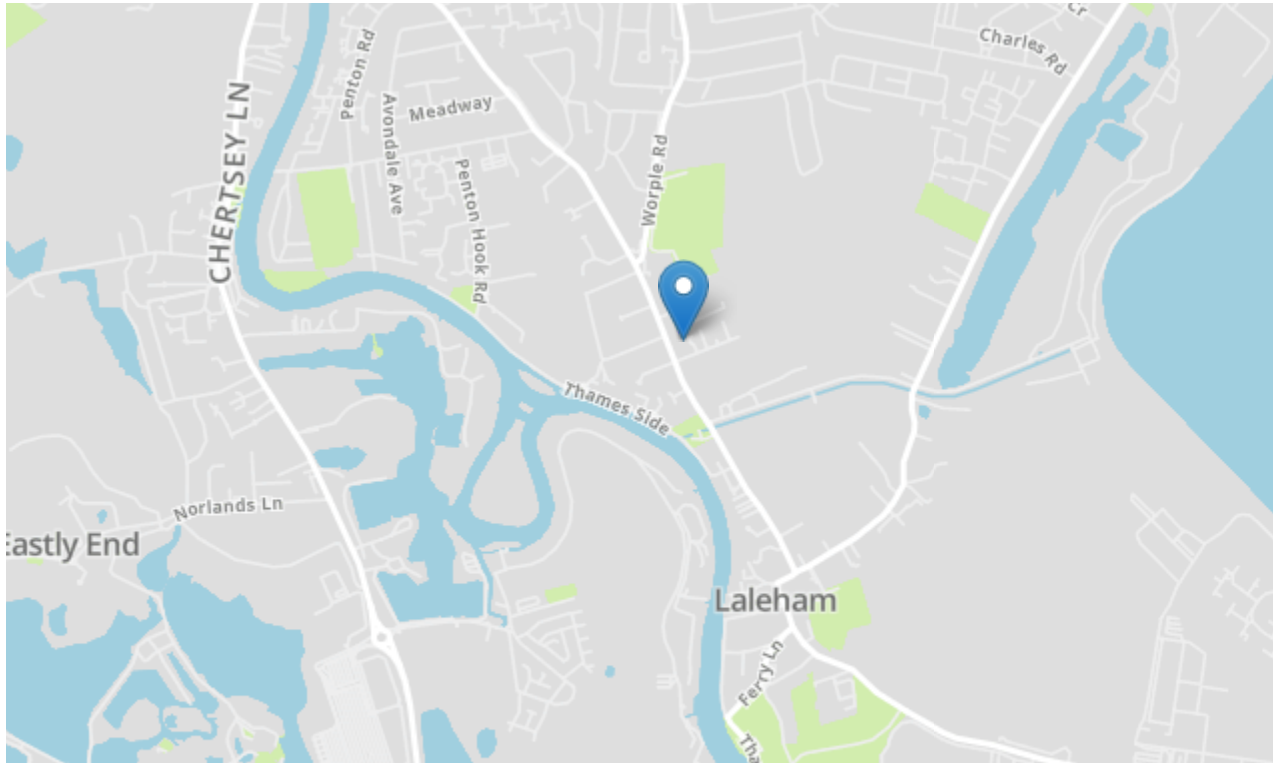
GREGORY BROWN
RESIDENTIAL SALES & LETTINGS





9 Willowmead, Staines-upon-Thames, Surrey. TW18 2SH.

gregory-brown.co.uk



Tenure **Freehold**

Lease Term

Ground Rent

Service Charge

Local Authority

Council Tax

We have prepared these property particulars as a general guide to a broad description of the property. They are not intended to constitute part of an offer or contract. We have not carried out a structural survey and the services, appliances and specific fittings have not been tested. All photographs, measurements, floorplans and distances referred to are given as a guide only and should not be relied upon for the purchase of carpets or any other fixtures or fittings. Lease details, service charges and ground rents (where applicable) and council tax are given as a guide only and should be checked and confirmed by your solicitor prior to exchange of contracts. The copyright of all details, photographs and floorplans remain exclusive to Gregory Brown.

