



**Westbere Road, London, NW2**

**£2,500**  
pcm



## Westbere Road, London, NW2

A well presented and smartly designed two double bedroom, two bathroom top floor apartment benefiting from a modern open plan kitchen/reception area, a delightful balcony and air conditioning throughout.

Westbere Road is perfectly located with Cricklewood Thameslink station positioned 0.5 miles away and with West Hampstead transport links (overground, Jubilee Line & Thameslink) and local amenities located 1 mile from the apartment. Kilburn underground station (Jubilee Line) is situated 0.6 miles away.

### Features

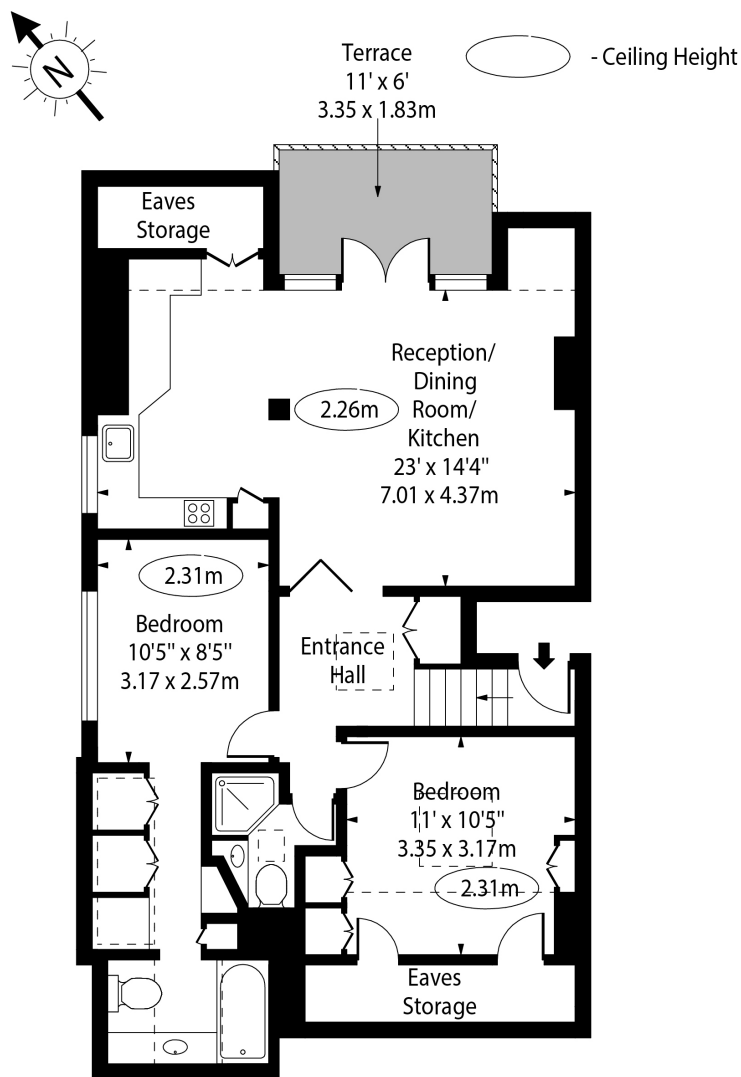
- Two Double Bedrooms
- Offered Furnished
- Two Bathrooms
- Balcony
- Well Presented Throughout
- Local Amenities & Transport Links Close By
- Available From Early November 2023
- Smartly Designed
- Air Conditioning Throughout





Westbere Road,  
London, NW2

Westbere Road, NW2



Second Floor

Approx Gross Internal Area 664 Sq Ft - 61.69 Sq M

Approx Floor Area Including Restricted Heights 854 Sq Ft - 79.34 Sq M

For Illustration Purposes Only - Not To Scale Floor Plan by [www.nogaphotostudio.com](http://www.nogaphotostudio.com) Ref: No.48304

This floor plan should be used as a general outline for guidance only. Any intending purchaser or lessee should satisfy themselves by inspection, searches, enquiries and full survey as to the correctness of each statement. Any areas, measurements or distances quoted are approximate and should not be used to value a property or be the basis of any sale or let.