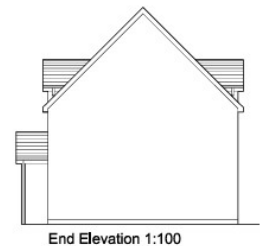
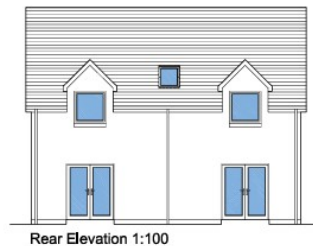




## Building Plot Adjacent To 160, Six House Bank, West Pinchbeck PE11 3QG£75,000



\*\*\*BUILDING PLOT WITH OUTLINE PLANNING PERMISSION\*\*\*

Outline planning permission has been granted by South Holland District Council for a three bedroom detached dwelling. The plot is located on Six House Bank and enjoys open views to both the front and rear. The approved outline design comprises: First Floor Three bedrooms Master bedroom with en-suite Family bathroom Ground Floor Lounge Kitchen/diner Downstairs cloakroom The property will benefit from off-road parking to the front and side. An excellent opportunity for self-builders or developers to create a family home in an attractive setting.

An excellent opportunity to acquire a building plot with outline planning permission for a three bedroom detached family home, approved by South Holland District Council.

Situated on Six House Bank, the plot enjoys open countryside views to both the front and rear, offering a desirable balance of rural outlooks with convenient access to local amenities.

The approved outline scheme proposes:

## First Floor

### Three bedrooms

Master bedroom with en-suite

## Family bathroom

## Ground Floor

## Lounge

Kitchen/diner

### Downstairs cloakroom

The proposed dwelling also benefits from off-road parking to the front and side.

This plot represents an ideal self-build or development opportunity, allowing purchasers to design and complete a modern family home in an attractive and sought-after location (subject to reserved matters).

