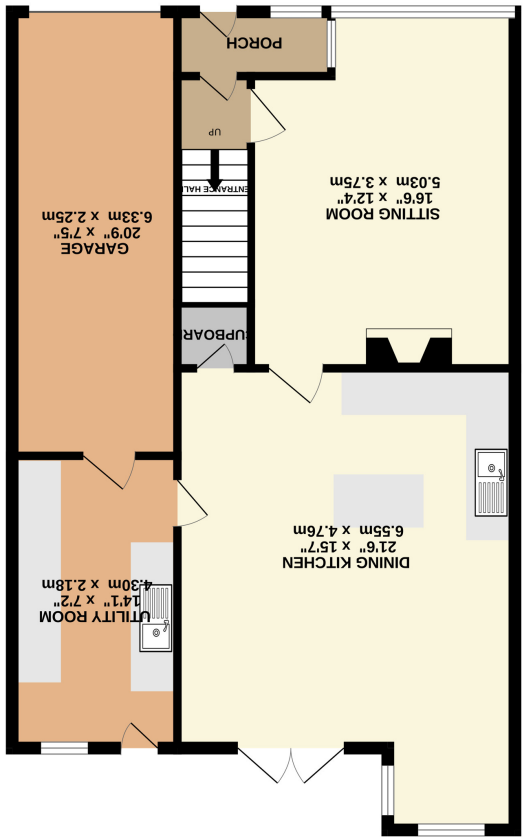
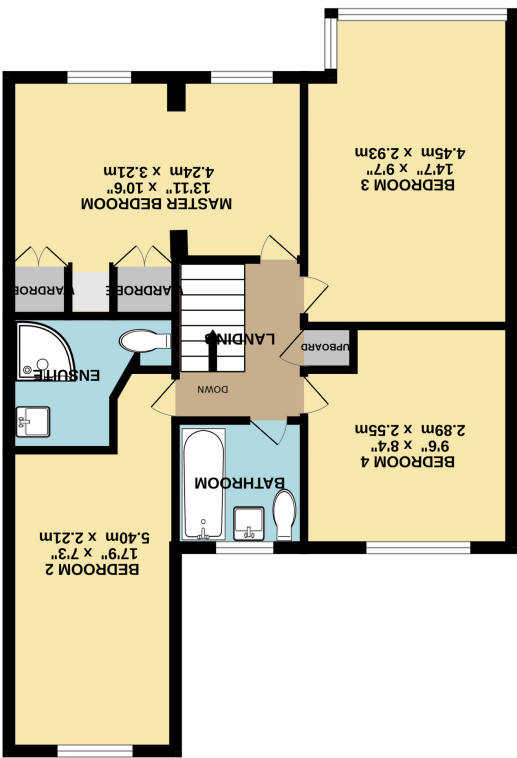


Whilst every attempt has been made to ensure the accuracy of the floorplan contained here, measurements of doors, windows, rooms and any other items are approximate and no responsibility is taken for any error, omission or mis-statement. This plan is for illustrative purposes only and should be used as such by any prospective purchaser. The services, systems and appliances shown have not been tested and no guarantee as to their operability or efficiency can be given.

Made with Metropix v2025



GROUND FLOOR



1ST FLOOR



18 Heath Moor Drive, Fulford, York YO10 4NF

A well presented and well maintained family home located in the highly desirable area of Fulford. This extended home briefly comprises; entrance hall, large lounge with feature fireplace, extended dining kitchen with central island and oak worktops and a convenient utility room. To the first floor are four good sized bedrooms with an ensuite shower room to the master, and a modern three piece house bathroom. Externally the property benefits from a well manicured front garden, driveway for ample off street parking and a garage. To the rear is a low maintenance, enclosed garden complete with a patio and lawn, perfect for entertaining with family and friends. Viewing is recommended to be able to appreciate what this home has to offer and its ideal location for Fulford, the A64 and City Centre.

