



Goldhawk Road, London, W6 0SA

Cow & Co
LONDON



Conveniently situated close to Stamford Brook tube station this well presented, one double bedroom apartment is on the first floor of a modern small block. The property comprises of a hallway, kitchen/living area, a large double bedroom and modern bathroom. Light and airy throughout with a Juliet balcony to the rear aspect.

An ideal first-time buy or investment flat due to its close proximity to local shops and restaurants as well as great transport links by bus and tube.

Goldhawk road is in the sought after Ravenscourt Park area, close to all the amenities of Chiswick High Road and King Street. Stamford Brook tube station is just less than a five minutes walk away.

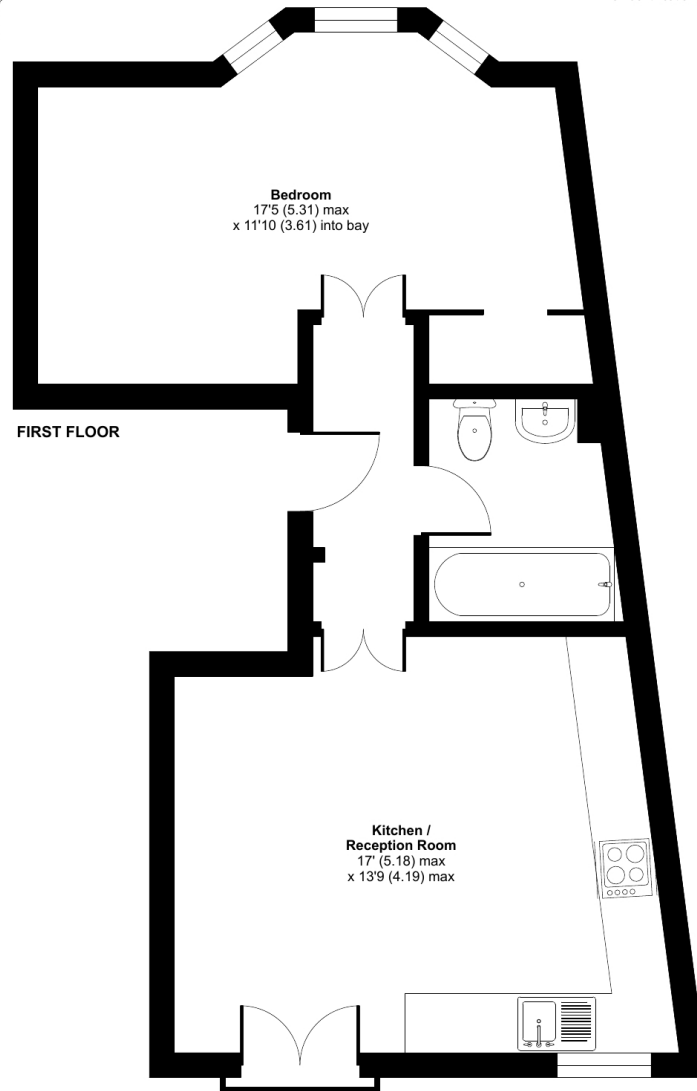


- First floor apartment
- Open plan reception and kitchen/dining area
- Juliet balcony
- Small modern purpose built block
- Double bedroom
- Close to a wealth of amenities and transport links
- Light and airy accommodation throughout
- Ideal Investment

Goldhawk Road, London, W6

Approximate Area = 497 sq ft / 46.1 sq m

For identification only - Not to scale



Floor plan produced in accordance with RICS Property Measurement Standards incorporating International Property Measurement Standards (IPMS2 Residential). © nchecon 2023. Produced for Cow & Co Properties Ltd. REF: 1059306

Tel: 0208 065 0010
Email: thehub@cowandco-london.com
Web: cowandco-london.com

Agents note: All measurements are approximate and whilst every attempt has been made to ensure accuracy they are for general guidance only and must not be relied on. The fixture and fittings referred to have not been tested and therefore no guarantee can be given that they are in working order. Internal photographs are reproduced for general information and it must not be inferred that any item shown is included with the property.

Cow & Co

LONDON