



Salisbury Close, Potters Bar, Hertfordshire, EN6 5AX

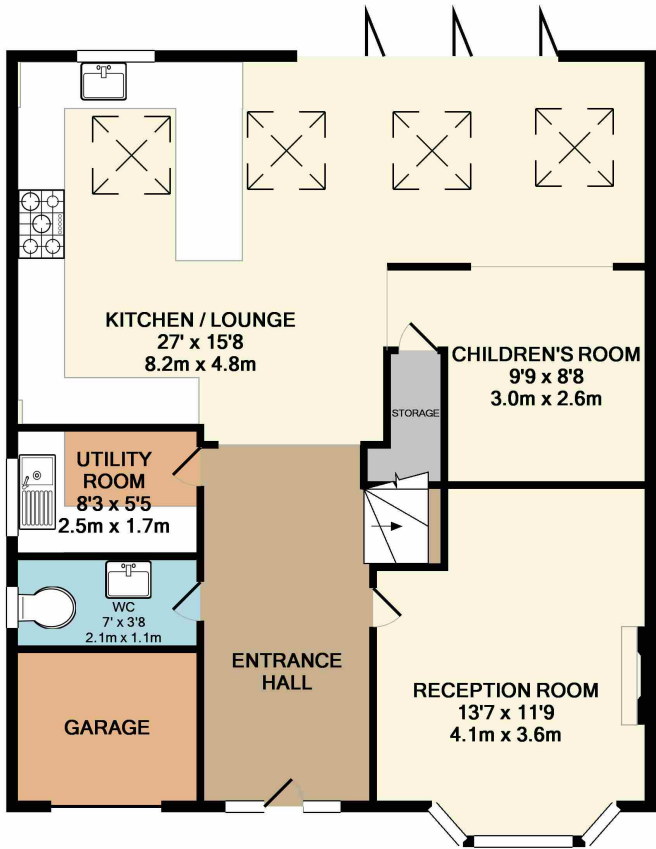
£719,950

- Extended Semi Detached Home
- Stunning Open Plan Kitchen
- Modern Bathroom with Bath and Shower
- Downstairs Cloakroom
- Three Double Bedrooms
- Bi-Folding Doors
- Utility Room
- Off Street Parking

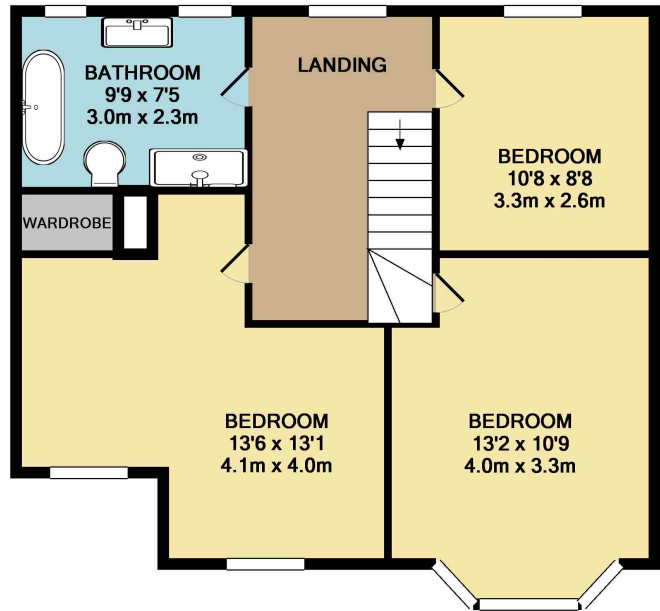
Salisbury Close, Potters Bar, Hertfordshire, . EN6 5AX

£719,950 Freehold

Stunning Three-Bedroom Semi-Detached Home – Prime Potters Bar Location Nestled in a peaceful close just a short stroll from Potters Bar High Street and mainline station, this beautifully extended and tastefully refurbished three-double-bedroom home offers the perfect blend of modern living and convenience. ☆☆



GROUND FLOOR
APPROX. FLOOR
AREA 869 SQ.FT.
(80.7 SQ.M.)



1ST FLOOR
APPROX. FLOOR
AREA 616 SQ.FT.
(57.2 SQ.M.)

TOTAL APPROX. FLOOR AREA 1485 SQ.FT. (137.9 SQ.M.)

Whilst every attempt has been made to ensure the accuracy of the floor plan contained here, measurements of doors, windows, rooms and any other items are approximate and no responsibility is taken for any error, omission, or mis-statement. This plan is for illustrative purposes only and should be used as such by any prospective purchaser. The services, systems and appliances shown have not been tested and no guarantee as to their operability or efficiency can be given
Made with Metropix ©2019

